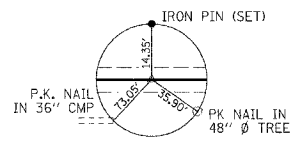
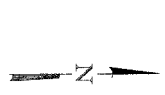
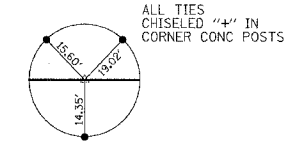


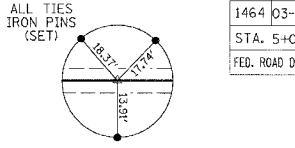
FAS	SECTION	COUNTY	TOTAL SHEETS	SHEET NO.
1464	03-0028-03-BR	TAZEWELL	15	4
STA. 5+00		TO STA. 15+00		
FED. ROAD DIST. NO.		ILLINOIS CONTRACT NO. 89346		



P.O.T. STA. 5+00.14
MAG NAIL (SET)

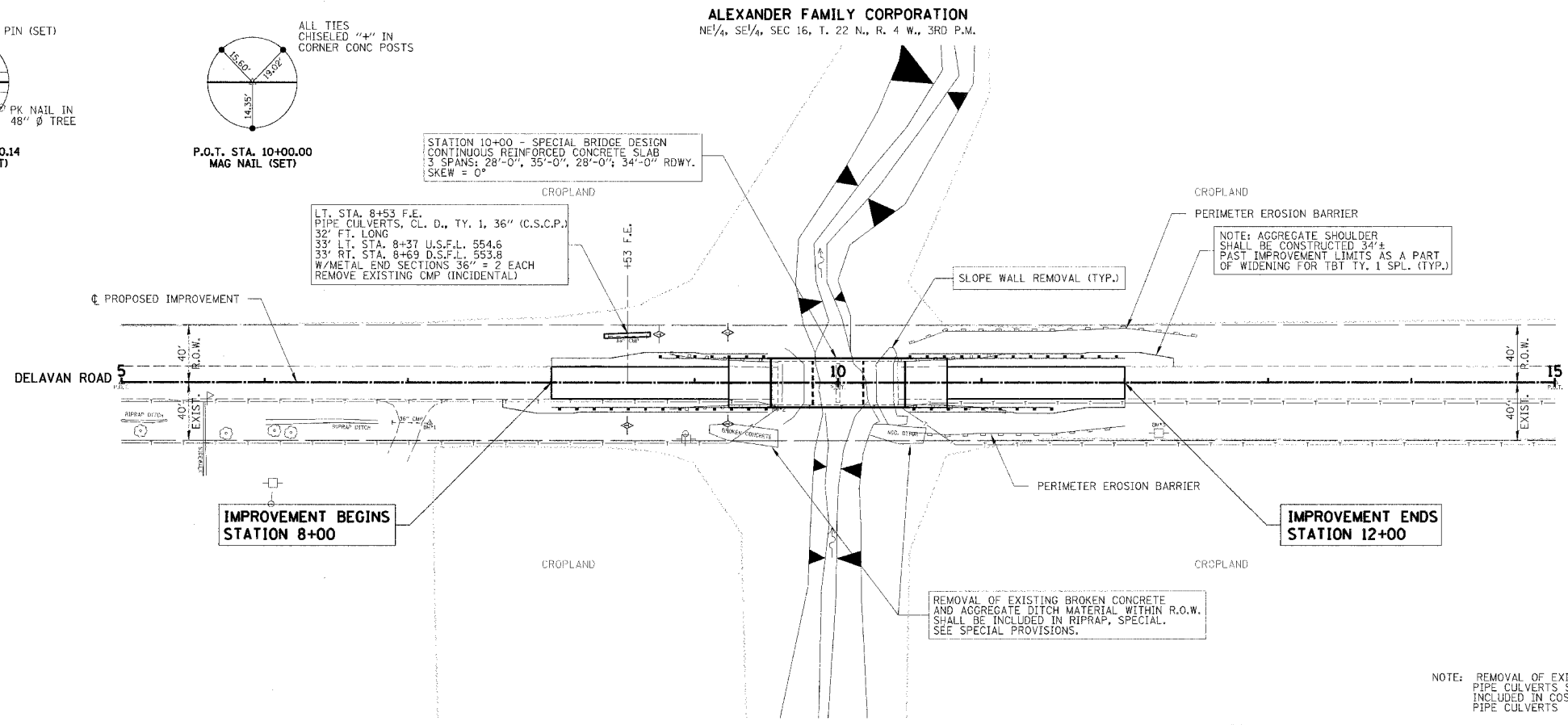


P.O.T. STA. 10+00.00
MAG NAIL (SET)



P.O.T. STA. 15+00.37
MAG NAIL (SET)

PLAN	DATE
BY	
CHECKED	
DATE	
NO.	



TEMPORARY DITCH CHECKS
TOTAL = 4 EACH
LOCATION AS APPROVED BY ENGINEER.

PERIMETER EROSION BARRIER
TOTAL = 400 FEET
LOCATION AS APPROVED BY THE ENGINEER

CONCRETE SLOPE WALL REMOVAL
= 336 SQ YD
SEE SPECIAL PROVISIONS.

ENTRANCES TO BE BUILT
LT. STA. 8+53 F.E. -13.47' AGG. 20' SURF.
QUANTITIES INCLUDED IN EARTHWORK TABLE

CHANNEL EXCAVATION
THE CHANNEL SHALL BE EXCAVATED AS SHOWN IN THE PLANS WITH 2:1 SIDE SLOPES WITHIN THE LIMITS OF THE PROPOSED STRUCTURE, THEN TAPER TO THE EXISTING CHANNEL AT THE R.O.W. LINES. ONLY SUITABLE EXCAVATED MATERIAL SHALL BE USED IN THE EMBANKMENT.

EXISTING STRUCTURE NO. 090-3019
STATION 10+00 - TWO SPAN CONC. HAUNCHED GIRDER BRIDGE WITH CONCRETE CURB & PARAPETS ON CONCRETE ABUTMENTS AND WINGWALLS. 78'-0\"/>

NOTE: REMOVAL OF EXISTING PIPE CULVERTS SHALL BE INCLUDED IN COST OF PROPOSED PIPE CULVERTS



PROFILE	DATE
BY	
CHECKED	
DATE	
NO.	

