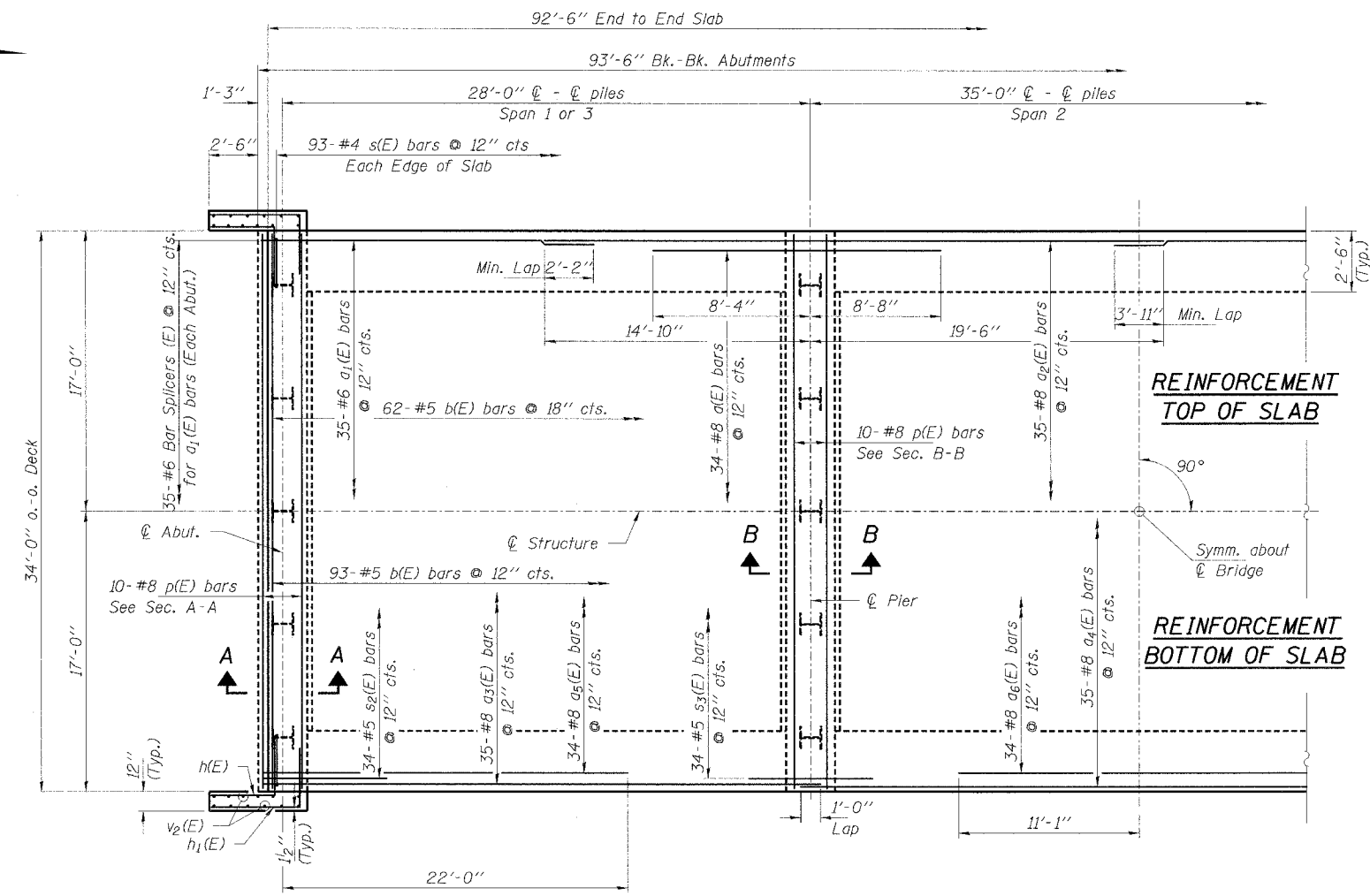


CONTRACT NO. 89346



Notes:
Reinforcement bars designated (E) shall be epoxy coated.
For edge beam details see Detail A on sheet 11.
For Sections A-A and B-B see Sheet 11.

PLAN

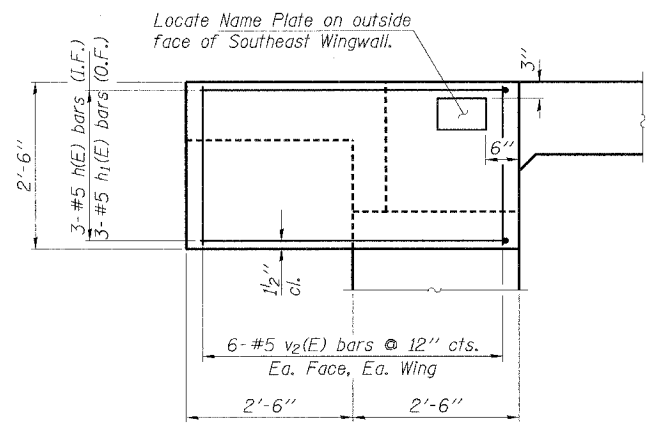
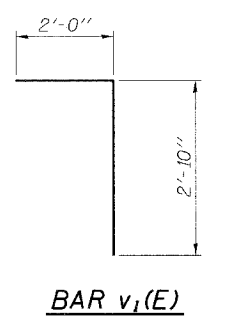
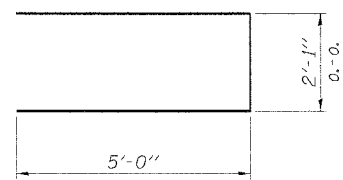
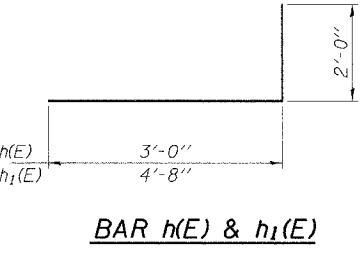
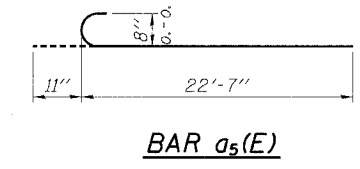
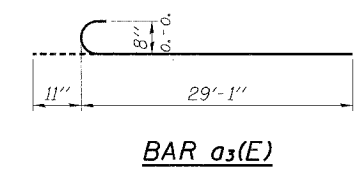
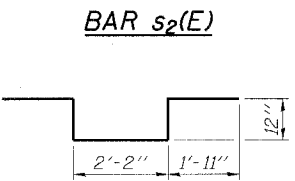
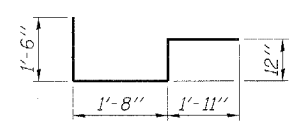
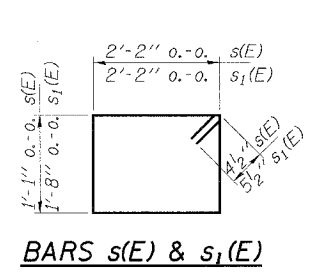
REINFORCEMENT
TOP OF SLAB

REINFORCEMENT
BOTTOM OF SLAB

BILL OF MATERIAL

BAR	NO.	SIZE	LENGTH	SHAPE
a(E)	68	#8	17'-0"	—
a ₁ (E)	70	#6	15'-11"	—
a ₂ (E)	70	#8	34'-4"	—
a ₃ (E)	70	#8	30'-0"	C
a ₄ (E)	35	#8	36'-0"	—
a ₅ (E)	68	#8	23'-6"	C
a ₆ (E)	34	#8	22'-2"	—
b(E)	155	#5	33'-8"	—
h(E)	12	#5	5'-0"	—
h ₁ (E)	12	#5	6'-8"	—
p(E)	40	#8	33'-8"	—
s(E)	186	#4	7'-3"	—
s ₁ (E)	136	#5	8'-7"	—
s ₂ (E)	68	#5	6'-1"	—
s ₃ (E)	68	#5	8'-0"	—
u(E)	24	#6	12'-1"	—
v(E)	272	#5	3'-3"	—
v ₁ (E)	68	#5	4'-10"	—
v ₂ (E)	48	#5	2'-2"	—
Concrete Superstructure			Cu. Yd.	156.8
Concrete Structures			Cu. Yd.	25.1
Reinforcement Bars, Epoxy Coated			Pound	40,540
Protective Coat			Sq. Yd.	375
Bridge Deck Grooving			Sq. Yd.	329
Name Plates			Each	1
Steel Piles HP10x42			Foot	765
Test Pile Steel HP10x42			Each	2
Concrete Encasement			Cu. Yd.	15.4
Bar Splicers			Each	70

See Sheet 13 for Bar Splicers.



WING DETAIL

MIN. BAR LAPS
#6 - 2'-2"
#8 - 3'-11"

HLR
Rice, Berry and Associates
A Division of Hampton, Lenzini and Renwick, Inc.
Civil & Structural Engineers
801 S. Durkin Drive
Springfield, Illinois 62704
217-546-3400
P.O. Box 1036
DuQuoin, Illinois 62832
618-790-4637
Date: 08/03/04
DESIGNED: T.P.L. CHECKED: S.W.M. DRAWN: D.B.

SUPERSTRUCTURE
F.A.S. 1464 / C.H. 2 / DELAVAN ROAD
SECTION 03-00028-03-BR
TAZEWELL COUNTY
STR. NO. 090-3241 / STATION 10+00