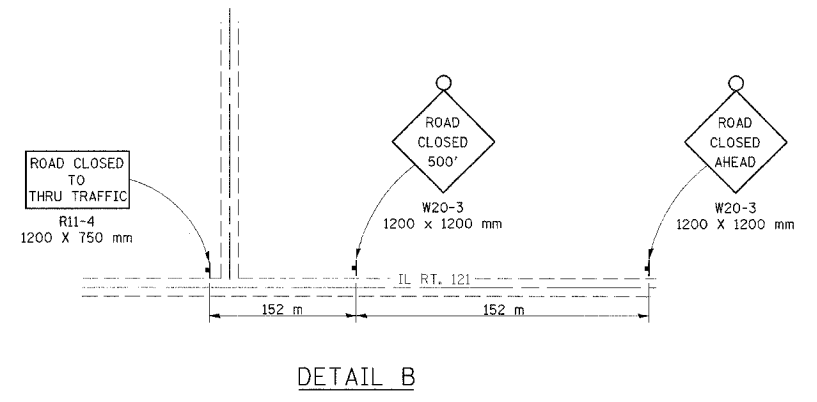
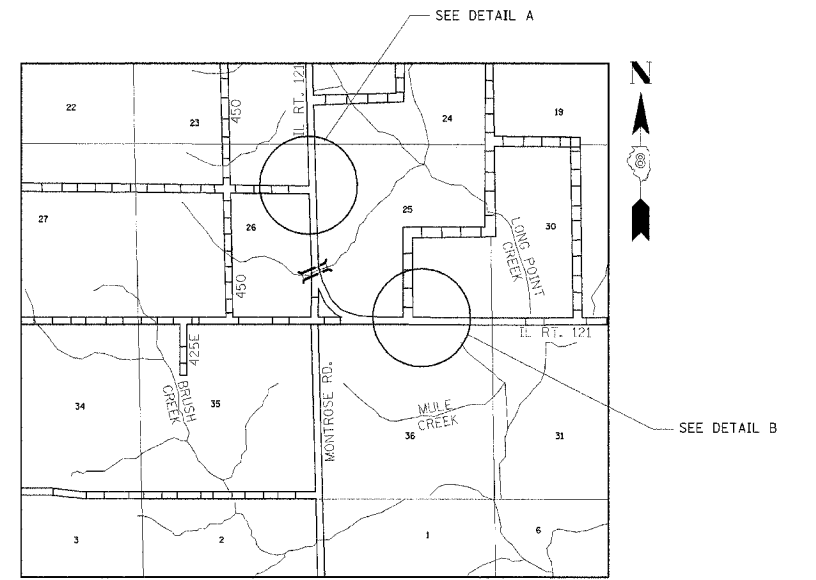
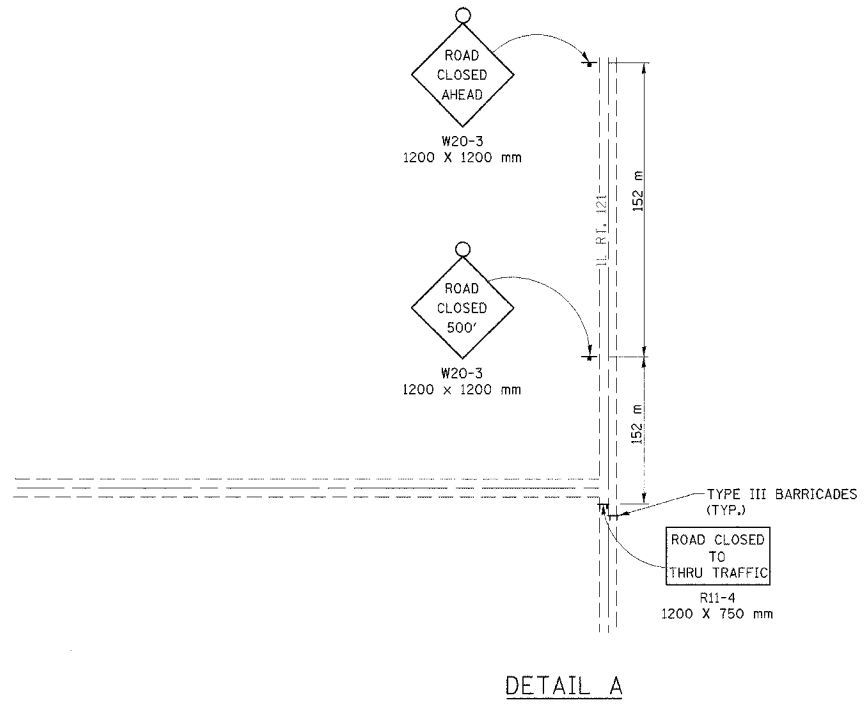
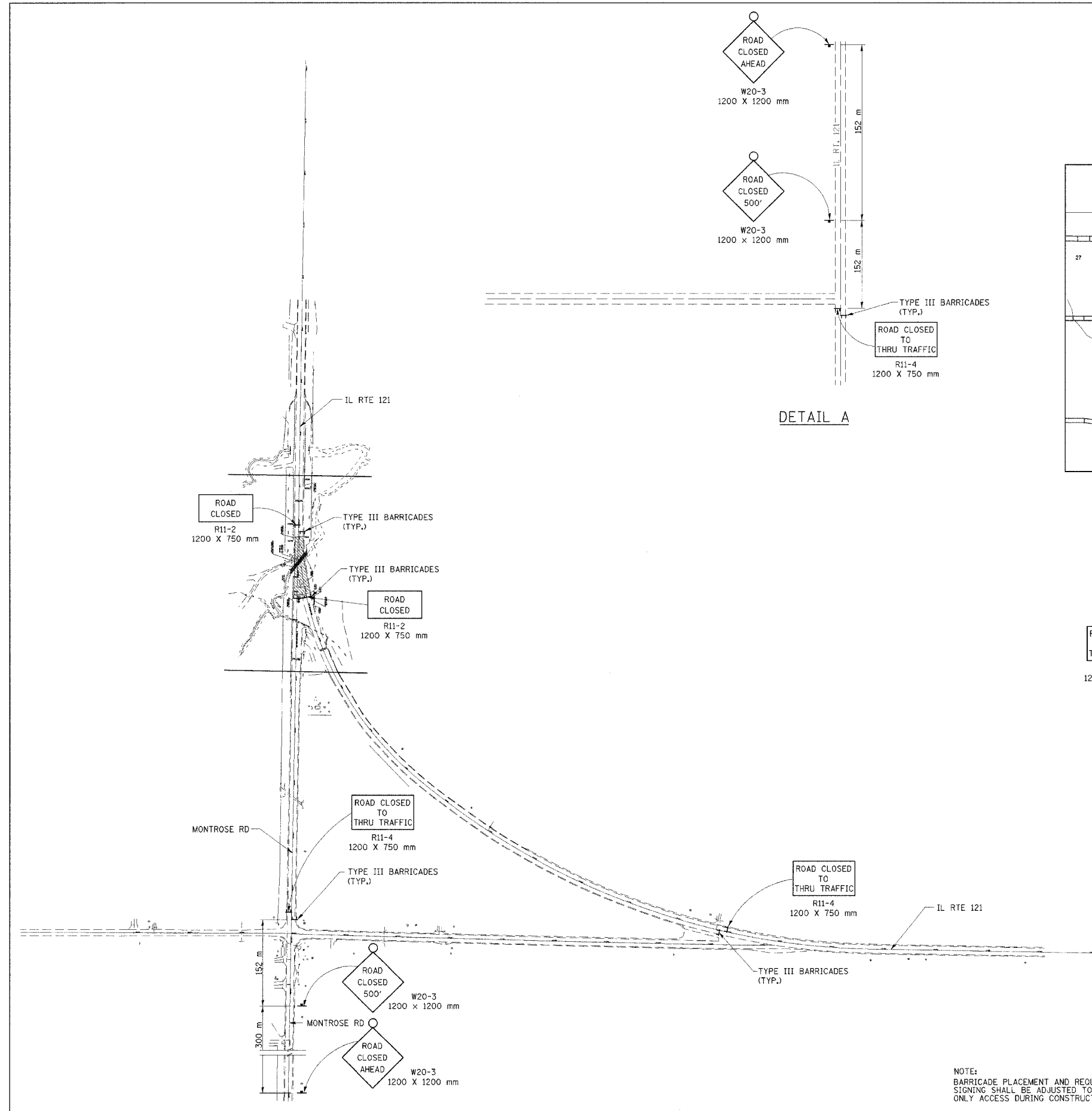


F.A.P. RTE.	SECTION	COUNTY	TOTAL SHEETS	SHEET NO.
B28	12BR-2	CUMBERLAND	32	7
STA.	TO STA.			
FED. ROAD DIST. NO. 5	ILLINOIS FED. AID PROJECT			

90920



LEGEND

	WORK AREA
	SIGN
	TYPE III BARRICADES WITH R11-2 4830
	TYPE A FLASHING LIGHT

REVISIONS	
NAME	DATE

ILLINOIS DEPARTMENT OF TRANSPORTATION
ROAD CLOSURE DETAIL
 FAP 828, (MONTROSE RD.)
 CUMBERLAND COUNTY

DATE _____ DRAWN BY BANDY
 CHECKED BY STEUART

NOTE:
 BARRICADE PLACEMENT AND REQUIRED CLOSURE SIGNING SHALL BE ADJUSTED TO ALLOW LOCAL TRAFFIC ONLY ACCESS DURING CONSTRUCTION OPERATIONS.

ROAD CLOSURE DETAIL, FAP 828, (MONTROSE RD.)