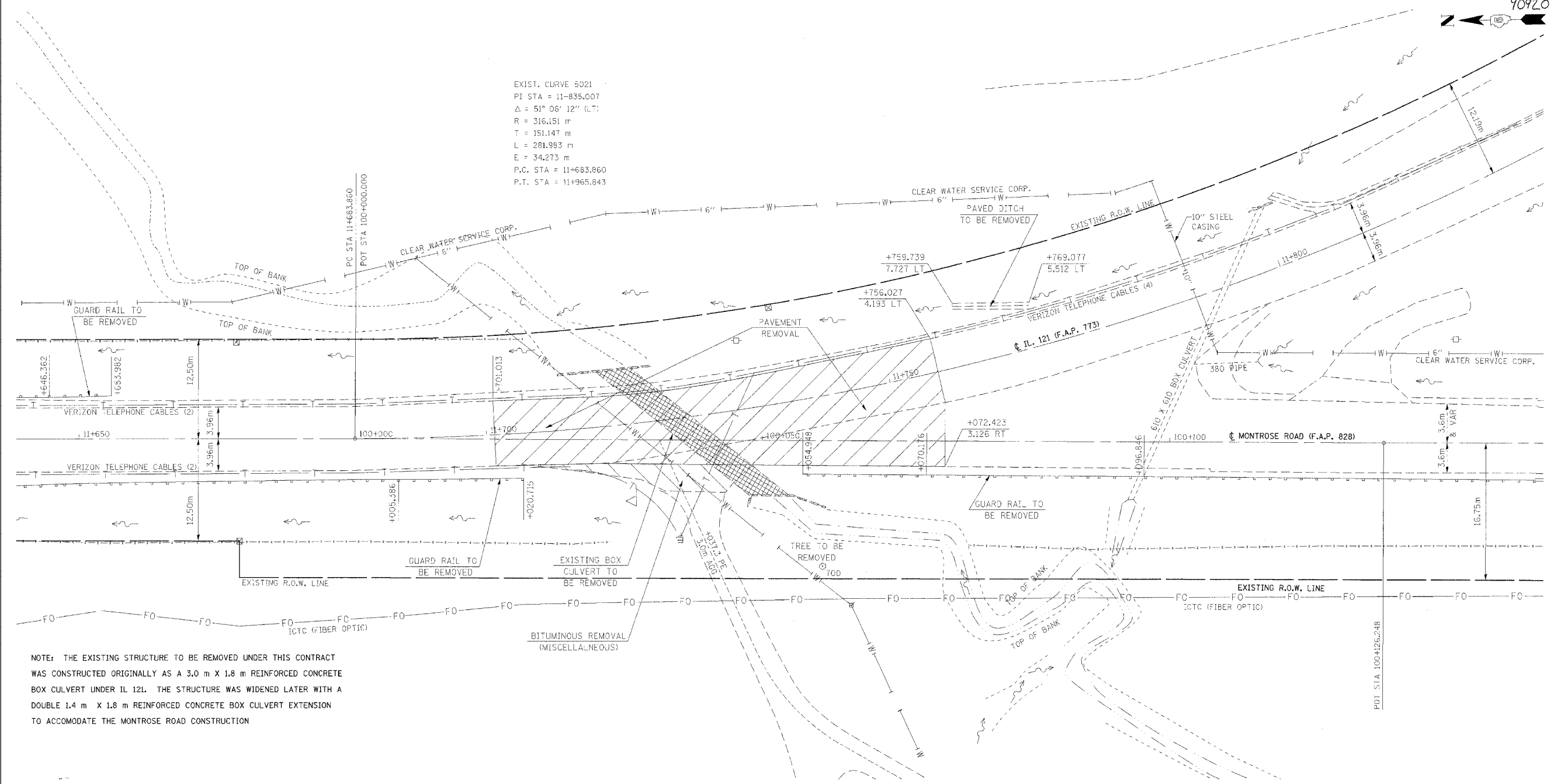


F.A.P. RTE.	SECTION	COUNTY	TOTAL SHEETS	SHEET NO.
828	12BR-2	CUMBERLAND	32	12
STA. 11+650.000		TO STA. 11+800.000		
FED. ROAD DIST. NO. 5		ILLINOIS FED. AID PROJECT		

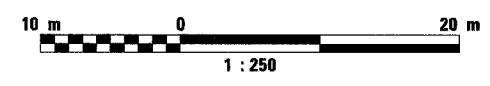
90920



EXIST. CURVE 5021
 PI STA = 11+835.007
 $\Delta = 51^\circ 06' 12''$ (L.T.)
 $R = 316.451$ m
 $T = 151.147$ m
 $L = 281.983$ m
 $E = 34.273$ m
 P.C. STA = 11+683.860
 P.T. STA = 11+965.843



NOTE: THE EXISTING STRUCTURE TO BE REMOVED UNDER THIS CONTRACT WAS CONSTRUCTED ORIGINALLY AS A 3.0 m X 1.8 m REINFORCED CONCRETE BOX CULVERT UNDER IL 121. THE STRUCTURE WAS WIDENED LATER WITH A DOUBLE 1.4 m X 1.8 m REINFORCED CONCRETE BOX CULVERT EXTENSION TO ACCOMMODATE THE MONTROSE ROAD CONSTRUCTION



REVISIONS	
NAME	DATE

ILLINOIS DEPARTMENT OF TRANSPORTATION
REMOVAL PLAN SHEET
 FAP 828 (MONTROSE RD.)
 CUMBERLAND COUNTY
 DRAWN BY BARGIEL
 CHECKED BY STEUART
 DATE 1/13/03

REMOVAL PLAN SHEET, FAP 828 (MONTROSE RD.)

Oldendor
 08:27:44 AM
 D:\projects\03\12\121a.dgn