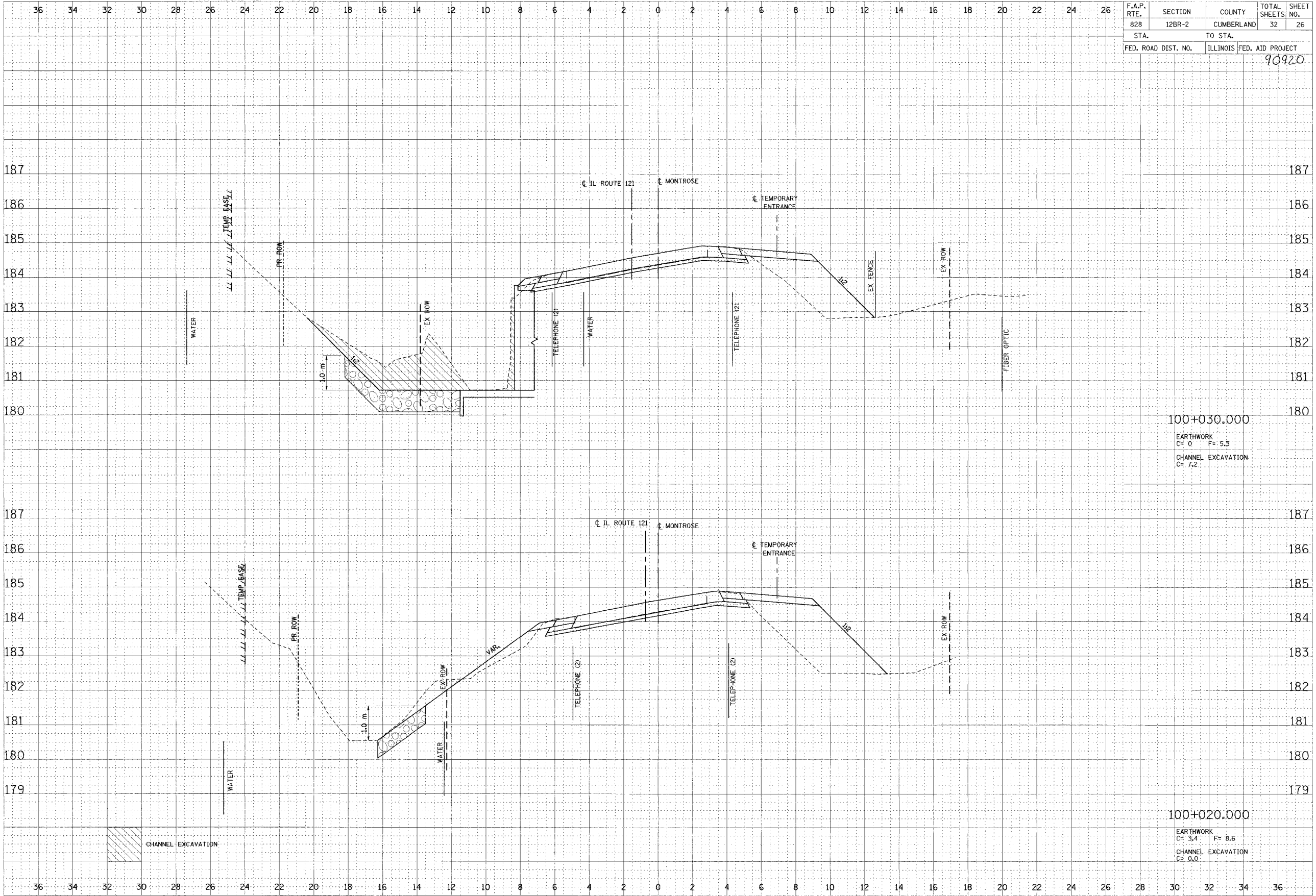


F.A.P. RTE.	SECTION	COUNTY	TOTAL SHEETS	SHEET NO.
828	12BR-2	CUMBERLAND	32	26
STA.	TO STA.			
FED. ROAD DIST. NO.	ILLINOIS	FED. AID PROJECT	90920	

FINAL SURVEY	DATE
REVISIONS	BY
NOTED	
PLOTTED	
TEMPERATURE	
NO. CHECKED	
AREAS CHECKED	



ORIGINAL SURVEY	DATE
REVISIONS	BY
NOTED	
PLOTTED	
TEMPERATURE	
NO. CHECKED	
AREAS CHECKED	

CROSS SECTIONS, MONTROSE ROAD, STA. 100+020.000 TO 100+030.000

11/15/2011 10:00 AM 12/26/2005 12:31:36 PM