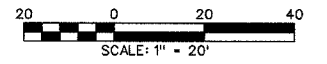
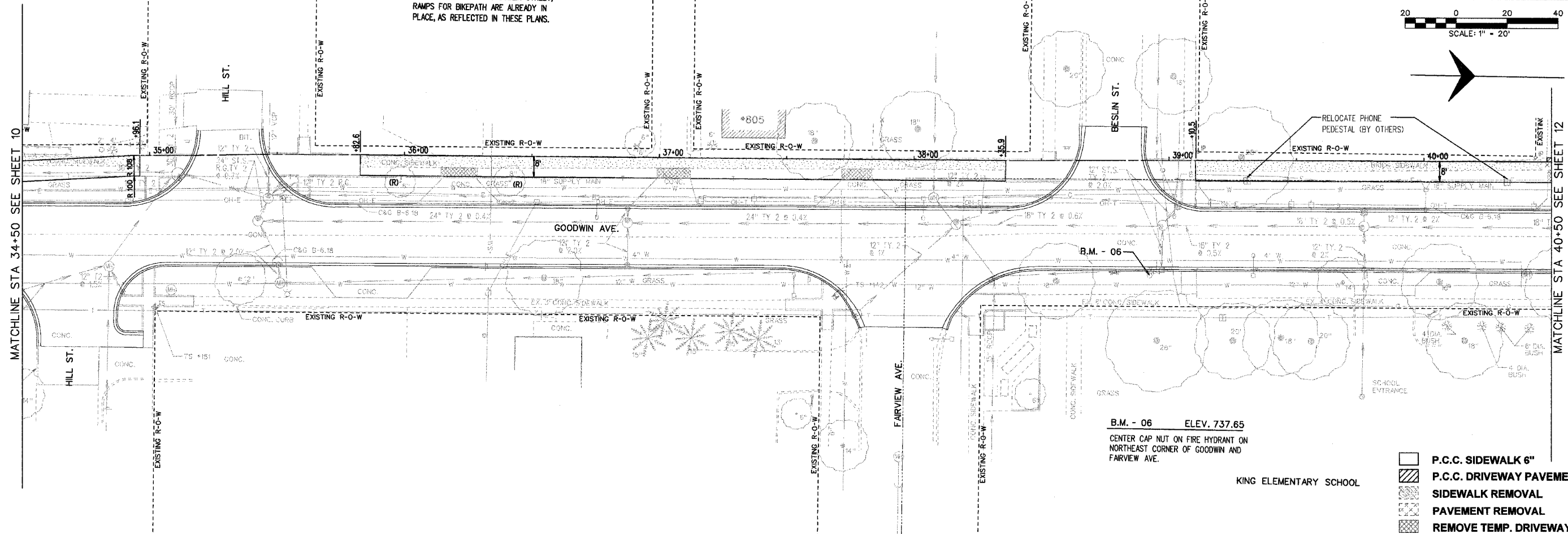


SECTION	COUNTY	TOTAL SHEETS	SHEET NO.
99-00352-00-BT	CHAMPAIGN	38	11
STA.	TO STA.		
F.H.W.A. REG.	ILLINOIS PROJECT	TE-0005(76)	



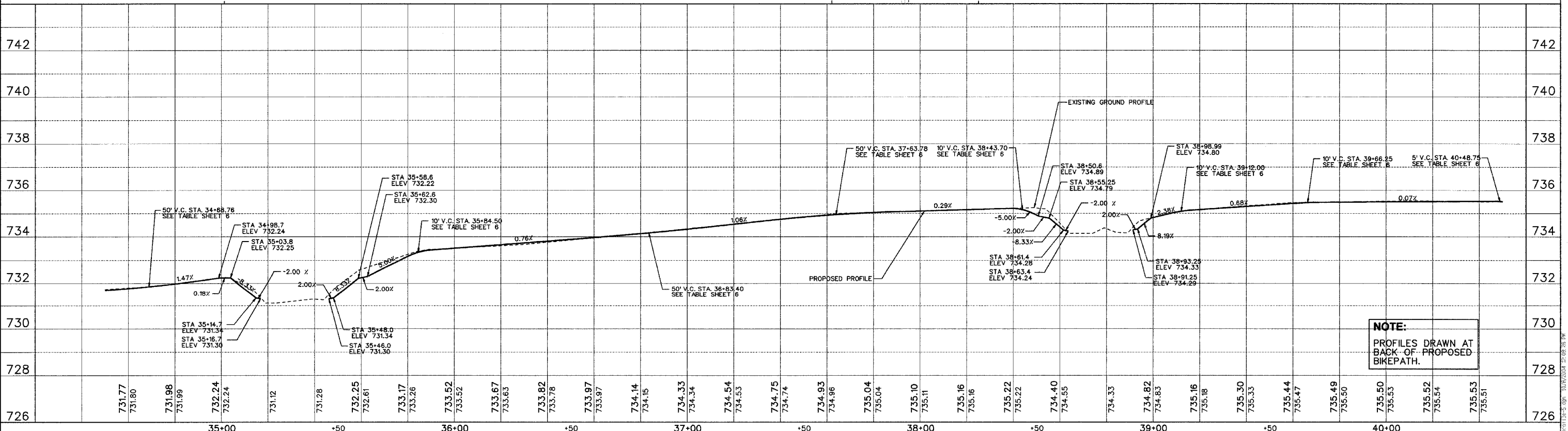
NOTE:
FROM PARK STREET TO DUBLIN STREET,
RAMPS FOR BIKEPATH ARE ALREADY IN
PLACE, AS REFLECTED IN THESE PLANS.



- P.C.C. SIDEWALK 6"
- P.C.C. DRIVEWAY PAVEMENT
- SIDEWALK REMOVAL
- PAVEMENT REMOVAL
- REMOVE TEMP. DRIVEWAY PAV'T

PLAN	SURVEYED	DATE
	PLOTTED	
	CHECKED	
	BY	
	NO. OF WAY CHECKED	

PROFILE	SURVEYED	DATE
	PLOTTED	
	CHECKED	
	BY	
	STRUCTURE NOTATIONS CH'D	



NOTE:
PROFILES DRAWN AT
BACK OF PROPOSED
BIKEPATH.