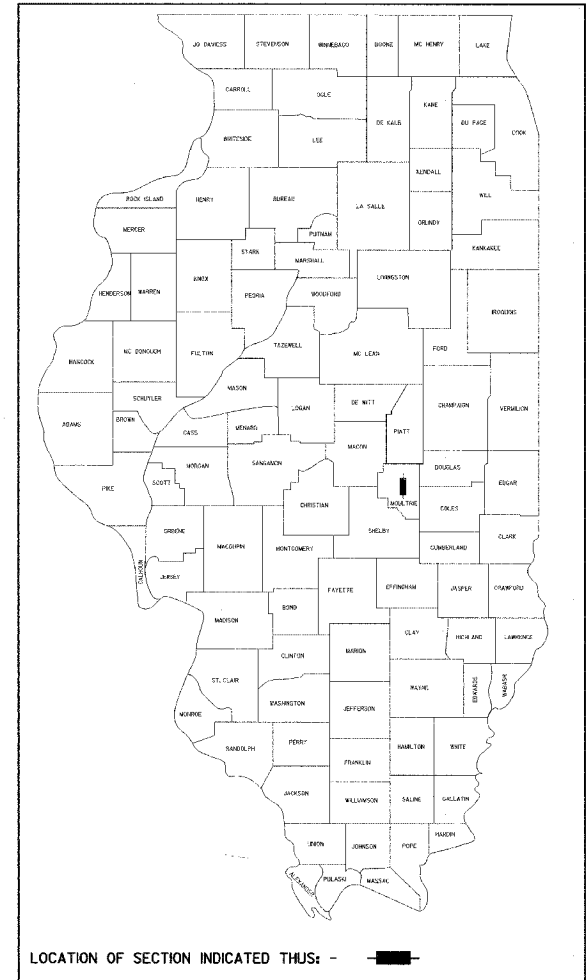


STATE OF ILLINOIS DEPARTMENT OF TRANSPORTATION DIVISION OF HIGHWAYS PLANS FOR PROPOSED BRIDGE REPLACEMENT AND REHABILITATION PROGRAM

ROUTE NO.	SECTION	COUNTY	SHEET NO.	TOTAL SHEETS
T.R. 158	03-05123-00-BR	MOULTRIE	13	1

CONTRACT NO. 91318



LOCATION OF SECTION INDICATED THIS: - [rectangle] -

APPROVED Nov 3 2004
[Signature]
ROAD DISTRICT COMMISSIONER

APPROVED Nov 3 2004
[Signature]
COUNTY ENGINEER

PASSED 11/8 2004
[Signature]
DISTRICT ENGINEER OF LOCAL ROADS & STREETS

APPROVED Nov 9 2004
[Signature]
DISTRICT ENGINEER
STATE OF ILLINOIS
DEPARTMENT OF TRANSPORTATION



SCALES { PLAN 0" = 50'
PROFILE HORIZ. 0" = 50'
PROFILE VERT. 0" = 5'
CROSS SECTIONS 0" = 5'

**PROJECT BR OS-0139(50)
SECTION 03-05123-00-BR
LOWE ROAD DISTRICT
MOULTRIE COUNTY
T.R. 158
JOB: C-95-318-04**

INDEX OF SHEETS

1. COVER SHEET
2. SUMMARY OF QUANTITIES AND TYPICAL CROSS SECTIONS
3. PLAN AND PROFILE
- 4.-7. STATION CROSS SECTIONS
- 8.-11. BRIDGE PLANS
- 12.-13. BORINGS

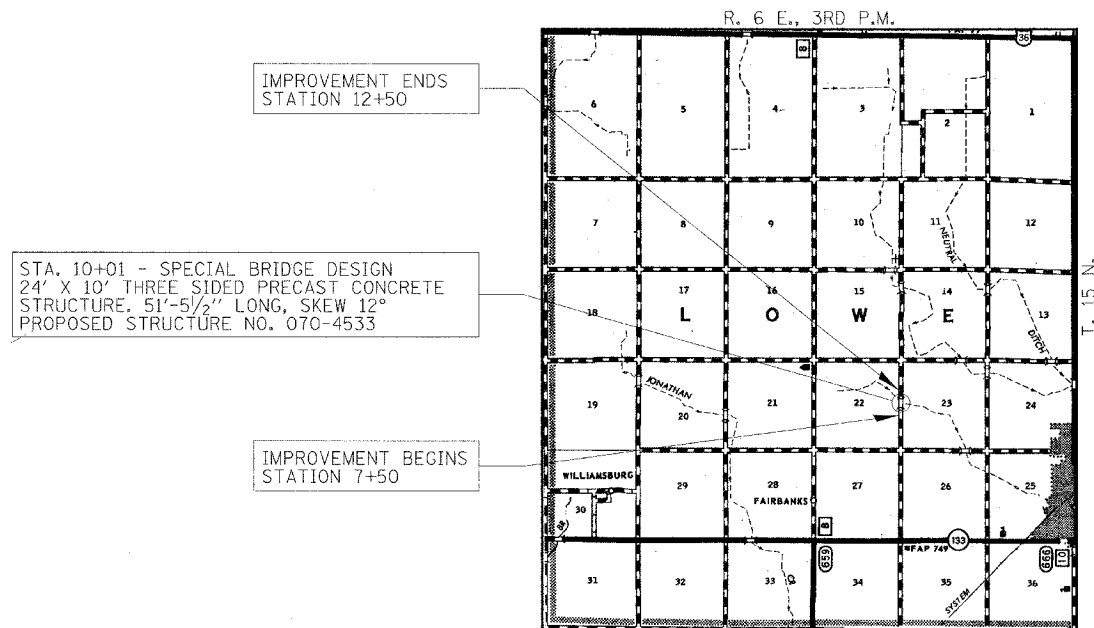
HIGHWAY STANDARDS:

- 515001-02 NAME PLATE FOR BRIDGES
- 702001-05 TRAFFIC CONTROL DEVICES
- BLR 21-6 TYPICAL APPLICATION OF TRAFFIC CONTROL DEVICES FOR CONSTRUCTION ON RURAL LOCAL HIGHWAYS

UTILITIES

CONSOLIDATED COMMUNICATIONS
121 SOUTH 17TH STREET
MATTOON, ILLINOIS 61938
(217) 234-9918

DESIGN FUNCTIONAL CLASSIFICATION:
LOCAL ROAD 0-250 ADT
DESIGN TRAFFIC:
DESIGN SPEED: 30 M.P.H.



LAYOUT

APPROXIMATE SCALE: 0 1 MILE
NET LENGTH OF SECTION = 500 FEET = 0.095 MILES

DATE: Nov. 2, 2004
BY: *[Signature]*
LICENSE EXPIRES: NOVEMBER 30, 2005

LICENSE NO. 33868
MICHAEL G. BERRY
33868 LICENSED PROFESSIONAL ENGINEER OF ILLINOIS

MBR
Rice, Berry and Associates
A Division of Hampton, Lenzini and Renwick, Inc.
Civil & Structural Engineers
801 S. Durkin Drive
Springfield, Illinois 62704
217-546-3400
Account Number 12-72-006-1
P.O. Box 1036
DuQuoin, Illinois 62832
618-790-4637