

RTE.	SECTION	COUNTY	TOTAL SHEETS	SHEET NO.
C.H. 11	*	MENARD	44	10
PROJECT 565-565(110)				
* 98-00047-00-RS				

**GENERAL NOTES**

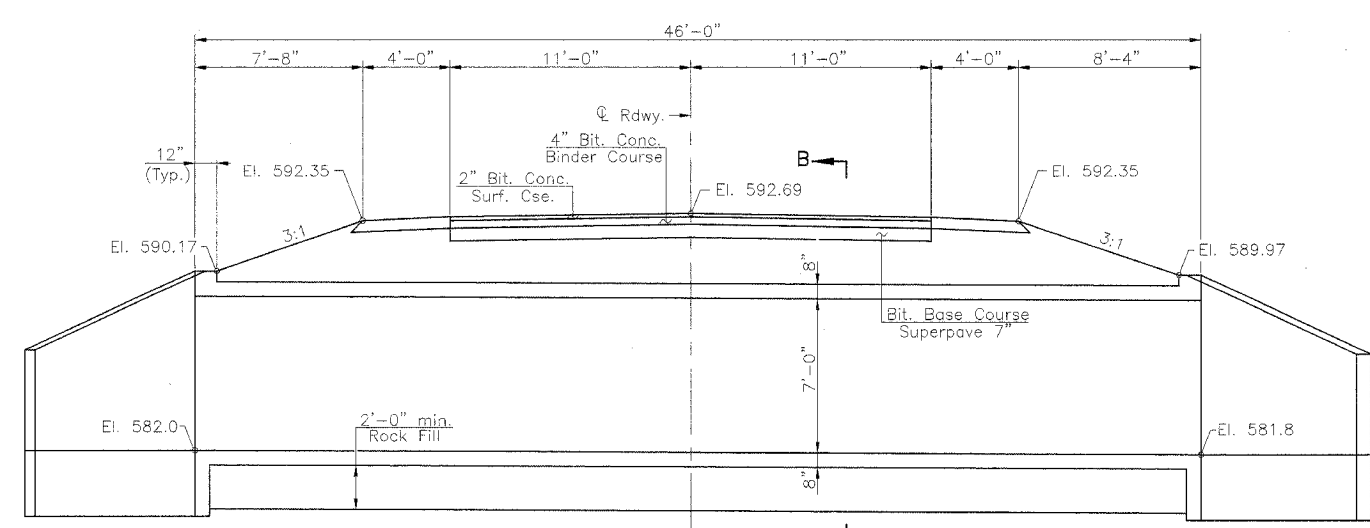
Precast Concrete Box Culvert sections shall conform to the requirements of Article 540.06 of the Standard Specifications and the applicable requirements of AASHTO M 273.

The minimum concrete strength shall be 5000 psi.

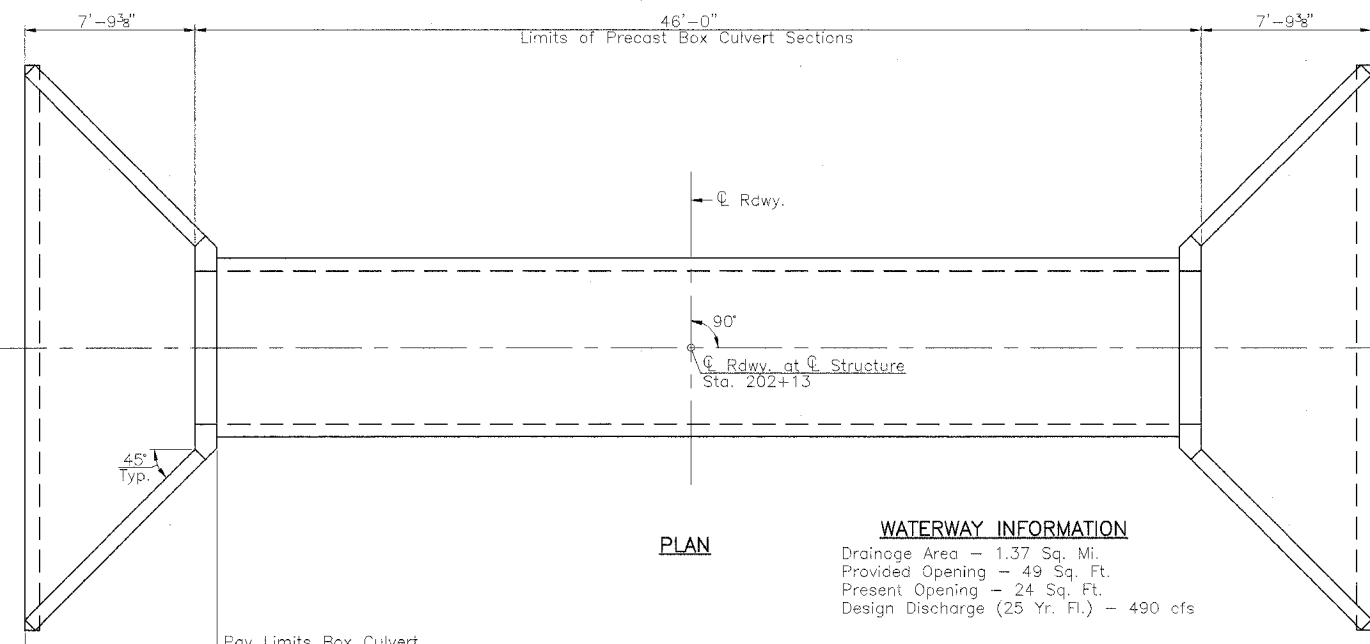
Reinforcement bars shall conform to the requirements of AASHTO M - 31, M - 42 or M - 53, Grade 60.

Lifting holes shall be filled with concrete plugs and mastic after box sections are in place.

For Section B-B see Sheet No. 13.

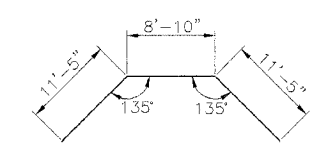


**ELEVATION B-B**

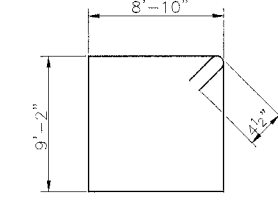


**PLAN**

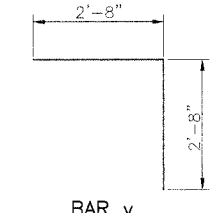
**WATERWAY INFORMATION**  
 Drainage Area - 1.37 Sq. Mi.  
 Provided Opening - 49 Sq. Ft.  
 Present Opening - 24 Sq. Ft.  
 Design Discharge (25 Yr. Fl.) - 490 cfs



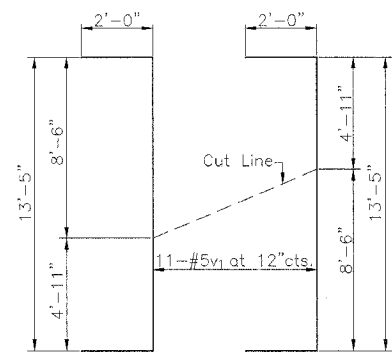
**BAR h**



**BAR s**

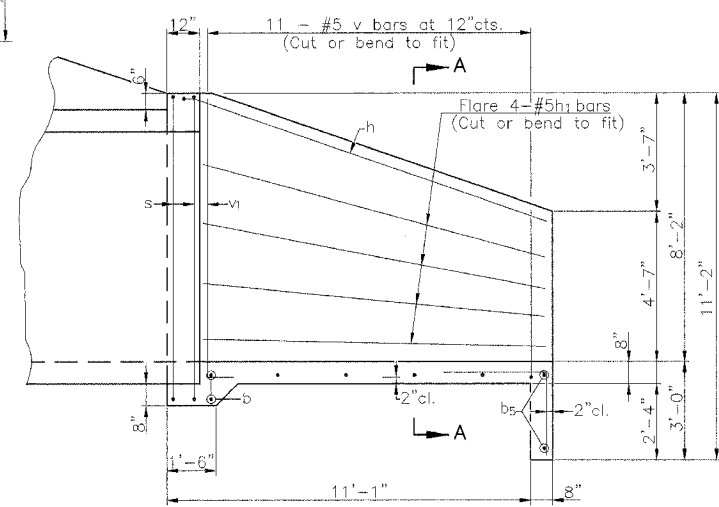


**BAR v**

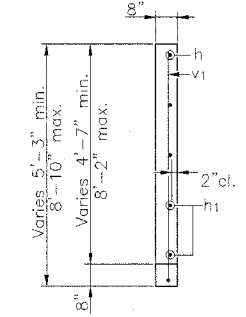


**v1 BAR CUT DIAGRAM**

Order v1 bars full length; Layout in field according to diagram. Cut v1 bars along cut line. Use remainder of each bar in opposite wing.



**HALF SIDE ELEVATION**



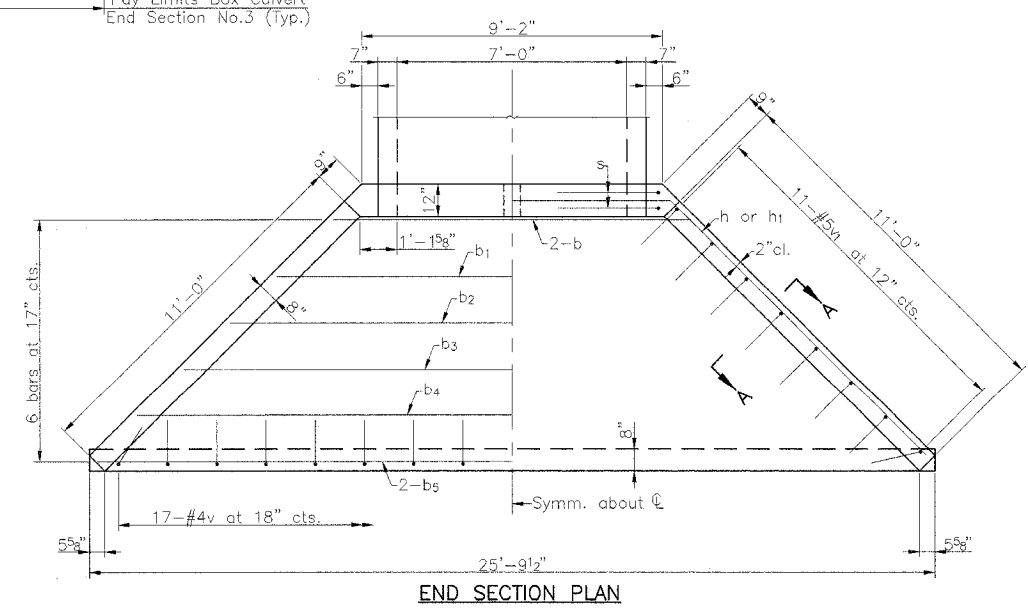
**SECTION A-A**

**CULVERT NO. 3  
TWO END SECTIONS  
BILL OF MATERIAL**

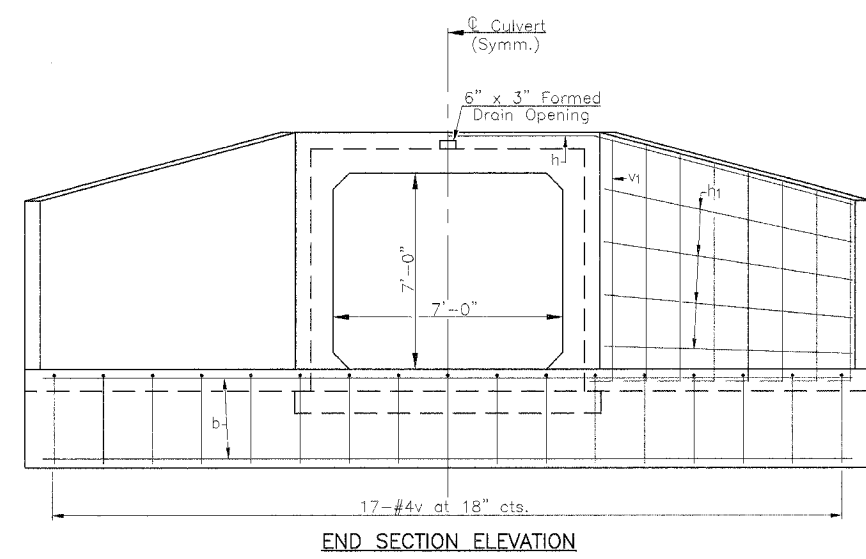
BAR	NO.	SIZE	LENGTH	SHAPE
b	4	#5	10'-8"	—
b1	2	#4	13'-7"	—
b2	2	#4	16'-8"	—
b3	2	#4	19'-6"	—
b4	2	#4	22'-5"	—
b5	4	#4	25'-5"	—
h	2	#5	31'-8"	∇
h1	16	#5	11'-5"	—
s	4	#4	36'-9"	□
v	34	#5	5'-4"	⊥
v1	22	#5	17'-5"	⊥

* Class SI Concrete	Cu. Yd.	16.4
* Reinforcement Bars	Pound	1155
Precast Concrete Box Culvert 7'x7'(M273)	Foot	46
Bituminous Base Course Superpave 7"	Sq. Yd.	88
Rock Fill	Ton	106
Porous Granular Backfill	Cu. Yd.	185
Pavement Removal	Sq. Yd.	88
Box Culvert End Sections Culvert No. 3	Each	2
Removal of Existing Structures No. 3	Each	1

\* Information Only



**END SECTION PLAN**



**END SECTION ELEVATION**

**CROSS ROAD CULVERT DETAILS  
(Sta. 202+13)  
F.A.S. 565 - QUARRY ROAD (C.H. 11)  
SECTION 98-00047-00-RS  
MENARD COUNTY**