

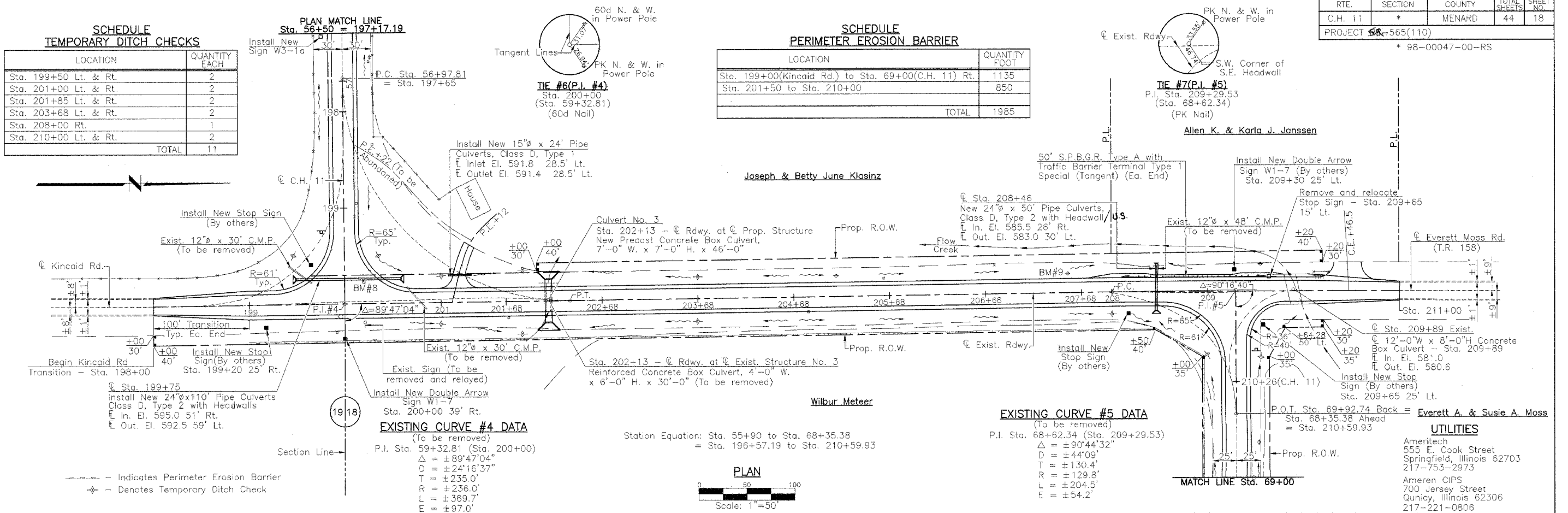
RTE.	SECTION	COUNTY	TOTAL SHEETS	SHEET NO.
C.H. 11	*	MENARD	44	18
PROJECT 565-565(110)				
* 98-00047-00-RS				

SCHEDULE TEMPORARY DITCH CHECKS

LOCATION	QUANTITY EACH
Sta. 199+50 Lt. & Rt.	2
Sta. 201+00 Lt. & Rt.	2
Sta. 201+85 Lt. & Rt.	2
Sta. 203+68 Lt. & Rt.	2
Sta. 208+00 Rt.	1
Sta. 210+00 Lt. & Rt.	2
TOTAL	11

SCHEDULE PERIMETER EROSION BARRIER

LOCATION	QUANTITY FOOT
Sta. 199+00 (Kincaid Rd.) to Sta. 69+00 (C.H. 11) Rt.	1135
Sta. 201+50 to Sta. 210+00	850
TOTAL	1985



EXISTING CURVE #4 DATA

(To be removed)

P.I. Sta. 59+32.81 (Sta. 200+00)

$\Delta = +89^{\circ}47'04''$

$D = +24^{\circ}16'37''$

$T = +235.0'$

$R = +236.0'$

$L = +369.7'$

$E = +97.0'$

EXISTING CURVE #5 DATA

(To be removed)

P.I. Sta. 68+62.34 (Sta. 209+29.53)

$\Delta = +90^{\circ}44'32''$

$D = +44^{\circ}09'$

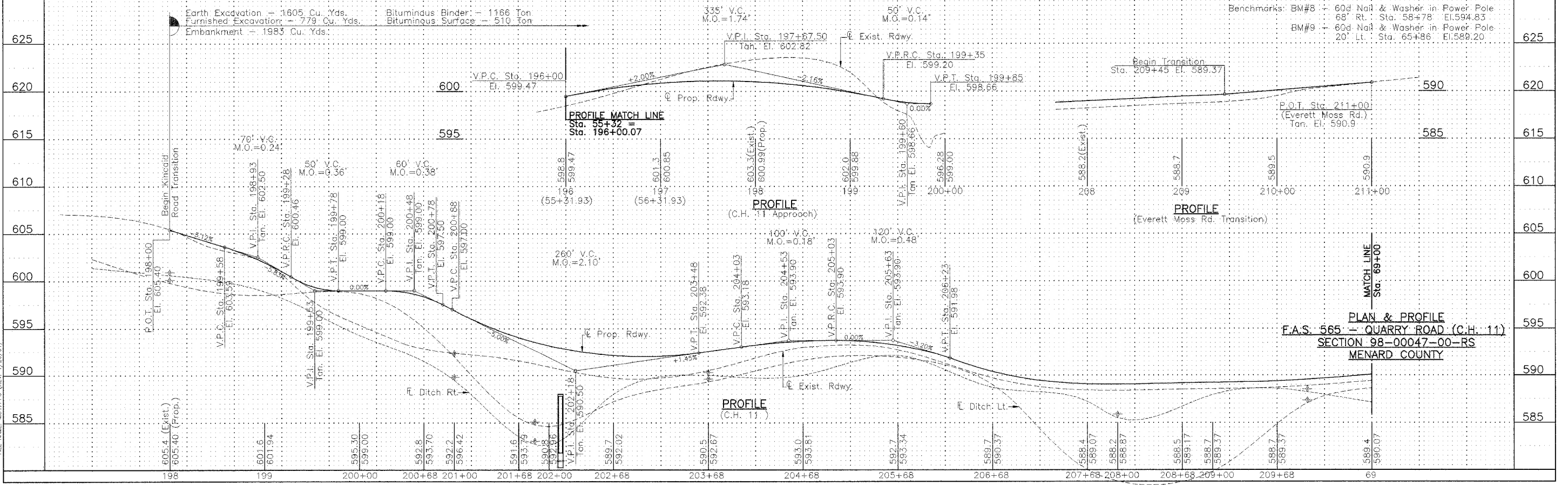
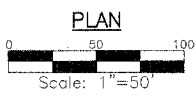
$T = +130.4'$

$R = +129.8'$

$L = +204.5'$

$E = +54.2'$

Station Equation: Sta. 55+90 to Sta. 68+35.38 = Sta. 196+57.19 to Sta. 210+59.93



PLAN & PROFILE
F.A.S. 565 - QUARRY ROAD (C.H. 11)
SECTION 98-00047-00-RS
MENARD COUNTY

FILE NAME: MC27P15 (REV. 1/29/04)