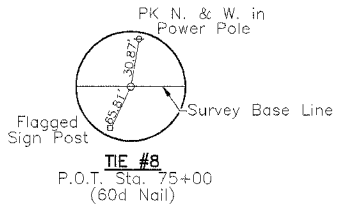
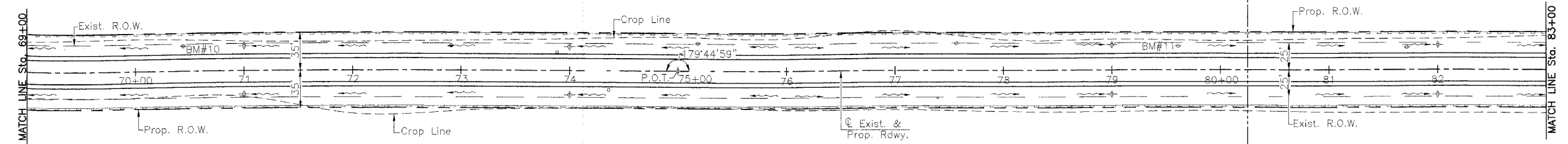


RTE.	SECTION	COUNTY	TOTAL SHEETS	SHEET NO.
C.H. 11	*	MENARD	44	19
PROJECT 98-565(110)				
* 98-00047-00-RS				



Everett A. & Susie A. Moss



SCHEDULE
TEMPORARY DITCH CHECKS

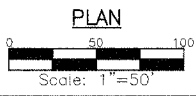
LOCATION	QUANTITY EACH
Sta. 71+00 Lt. & Rt.	2
Sta. 74+00 Lt. & Rt.	2
Sta. 79+00 Lt. & Rt.	2
Sta. 82+00 Lt. & Rt.	2
TOTAL	8

SCHEDULE
PERIMETER EROSION BARRIER

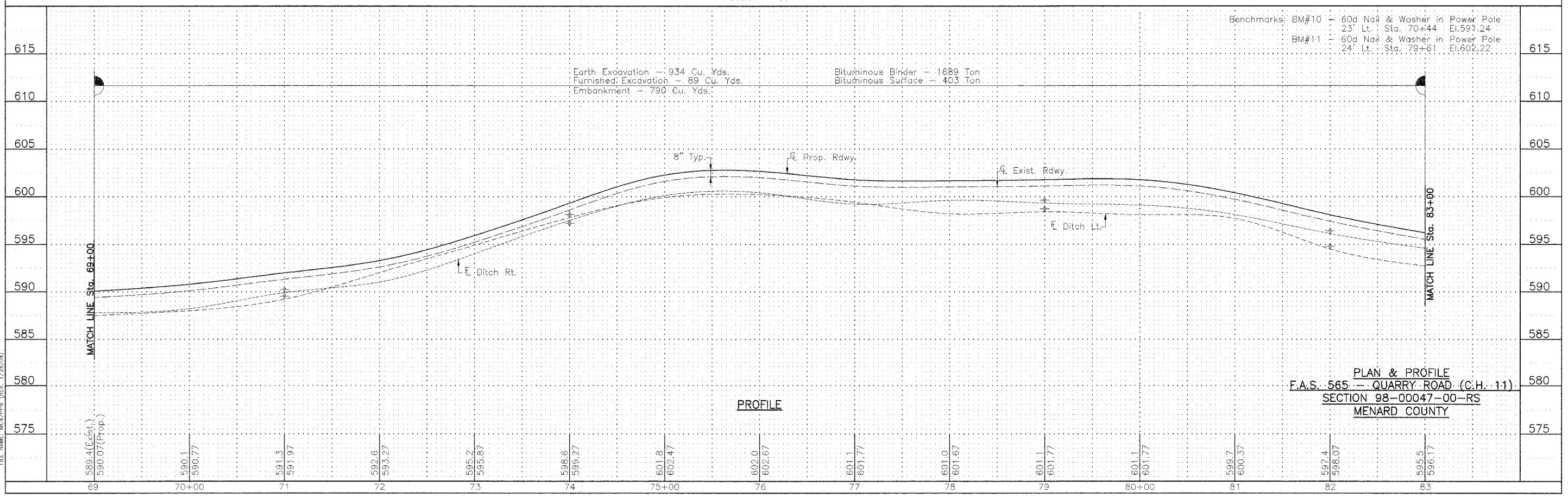
LOCATION	QUANTITY EACH
Sta. 69+00 to Sta. 83+00 Lt. & Rt.	2800
TOTAL	2800

UTILITIES

Ameritech
555 E. Cook Street
Springfield, Illinois 62702
217-753-2973
Ameren CIPS
700 Jersey Street
Quincy, Illinois 62306
217-221-0806



--- Indicates Perimeter Erosion Barrier
+ Denotes Temporary Ditch Check



PROFILE

PLAN & PROFILE
F.A.S. 565 - QUARRY ROAD (C.H. 11)
SECTION 98-00047-00-RS
MENARD COUNTY

FILE NAME: M047P06 (REV. 1/26/04)