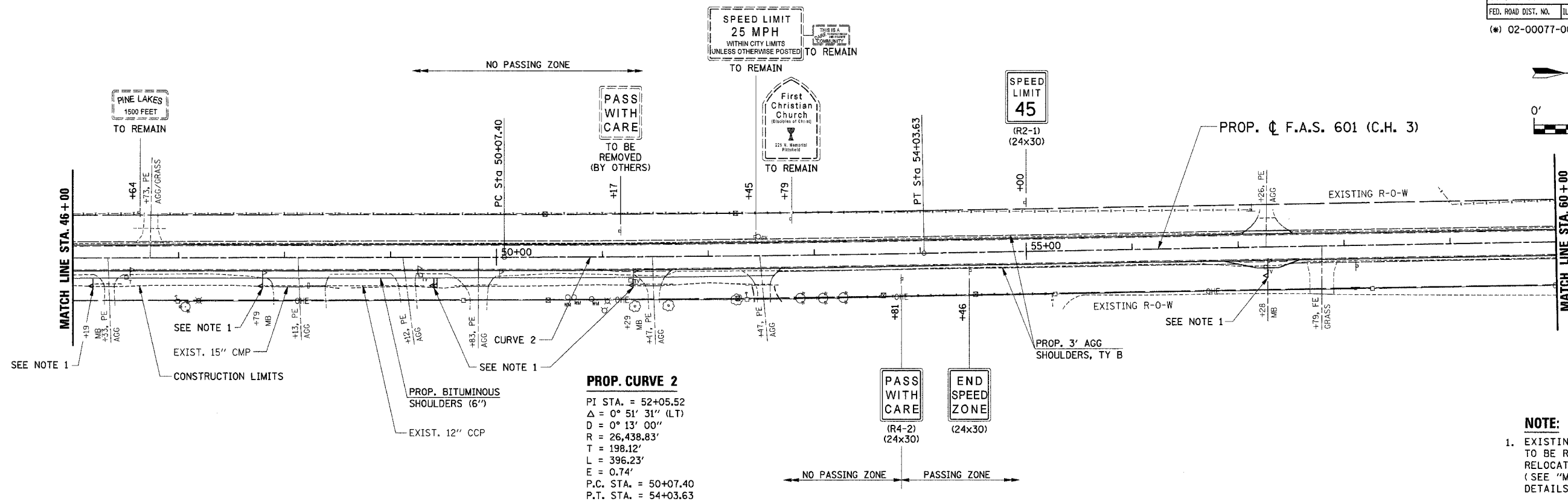
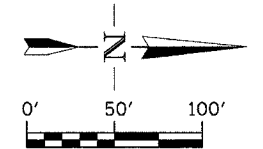
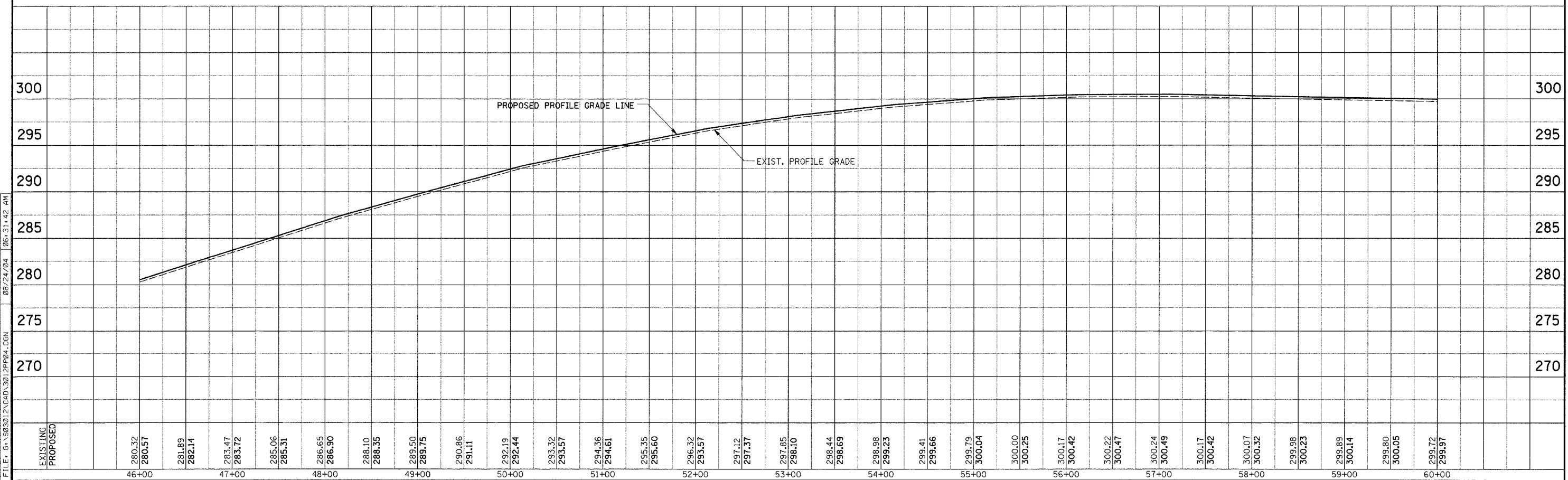


F.A.S. RTE.	SECTION	COUNTY	TOTAL SHEETS	SHEET NO.
601	(*)	PIKE	51	17
STA. 46+00		TO STA. 60+00		
FED. ROAD DIST. NO.	ILLINOIS	FED. AID PROJECT		

(\*) 02-00077-00-RS



**NOTE:**  
 1. EXISTING MAILBOX(S) TO BE REMOVED AND RELOCATED AS REQUIRED (SEE "MAILBOX TURNOUT DETAILS")



PLAN AND PROFILE - STA. 46+00 TO STA. 60+00

FILE: G:\S03012\CAD\3012P024.DGN 08/24/04 06:31:42 AM