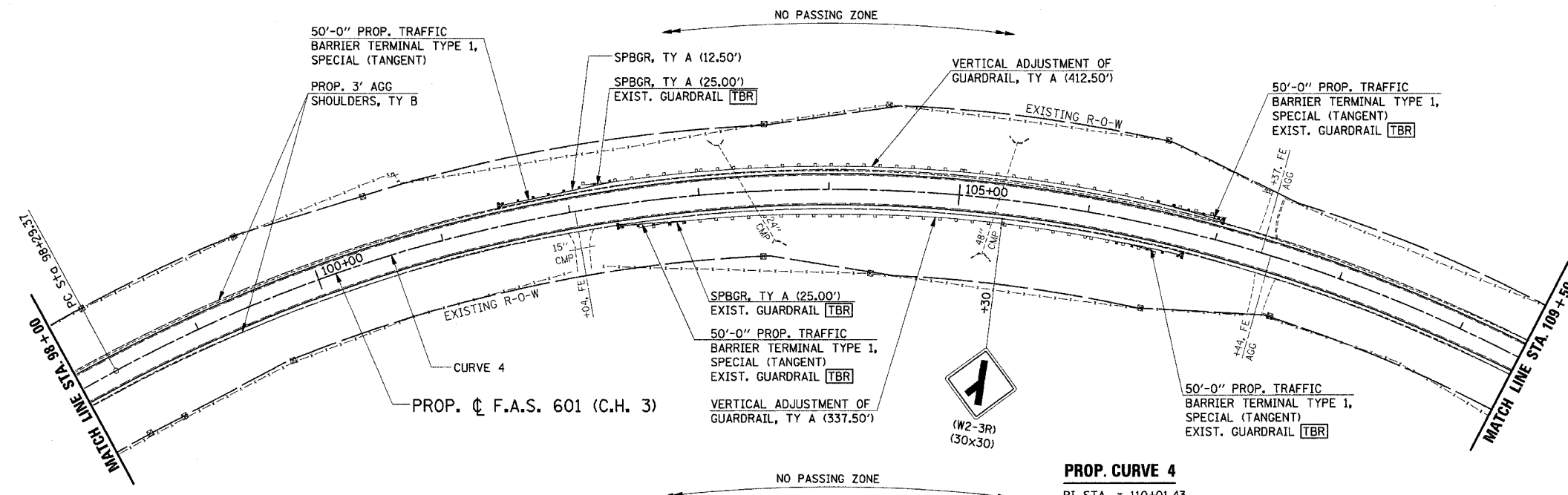
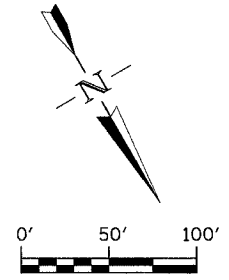


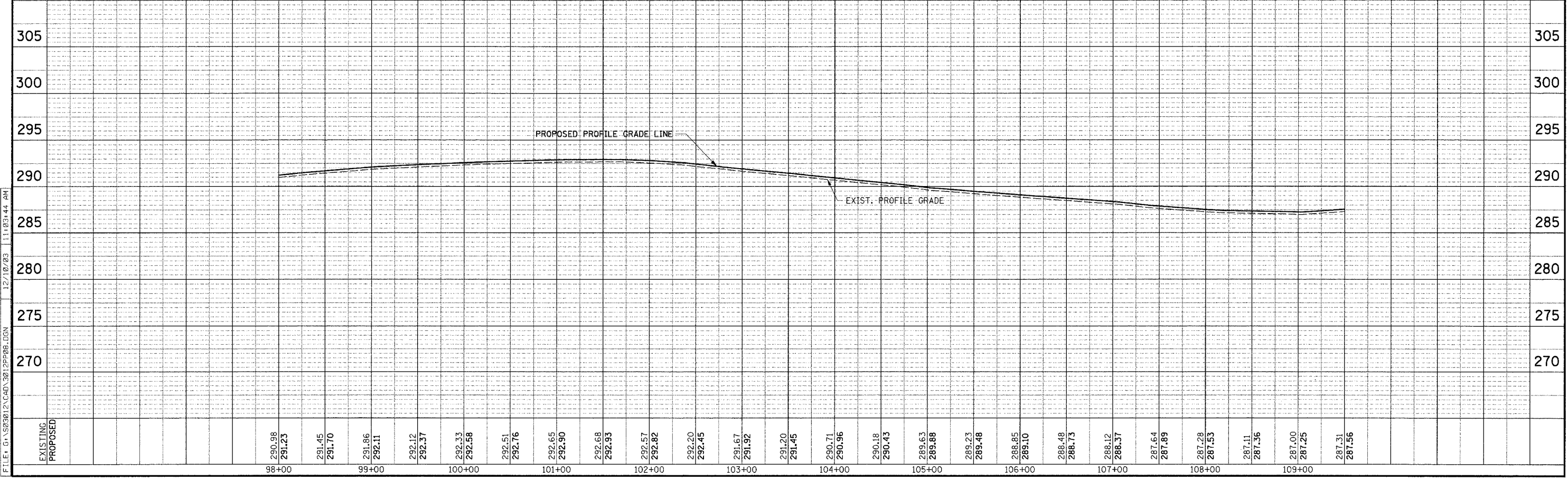
F.A.S. RTE.	SECTION	COUNTY	TOTAL SHEETS	SHEET NO.
601	(*)	PIKE	51	21
STA. 98+00		TO STA. 109+50		
FED. ROAD DIST. NO.	ILLINOIS FED. AID PROJECT			

(*) 02-00077-00-RS



PROP. CURVE 4
 PI STA. = 110+01.43
 $\Delta = 91^\circ 17' 32''$ (RT)
 $D = 5^\circ 00' 00''$
 $R = 1,145.92'$
 $T = 1,172.06'$
 $L = 1,825.85'$
 $E = 493.24'$
 P.C. STA. = 98+29.37
 P.T. STA. = 116+55.22
 S.E. = 8.0%

NOTE:
 1. SEE "SCHEDULE OF QUANTITIES" FOR GUARDRAIL LOCATIONS.



FILE: G:\NS0301\2\CAD\3012P025.DGN 12/10/03 11:03:44 AM