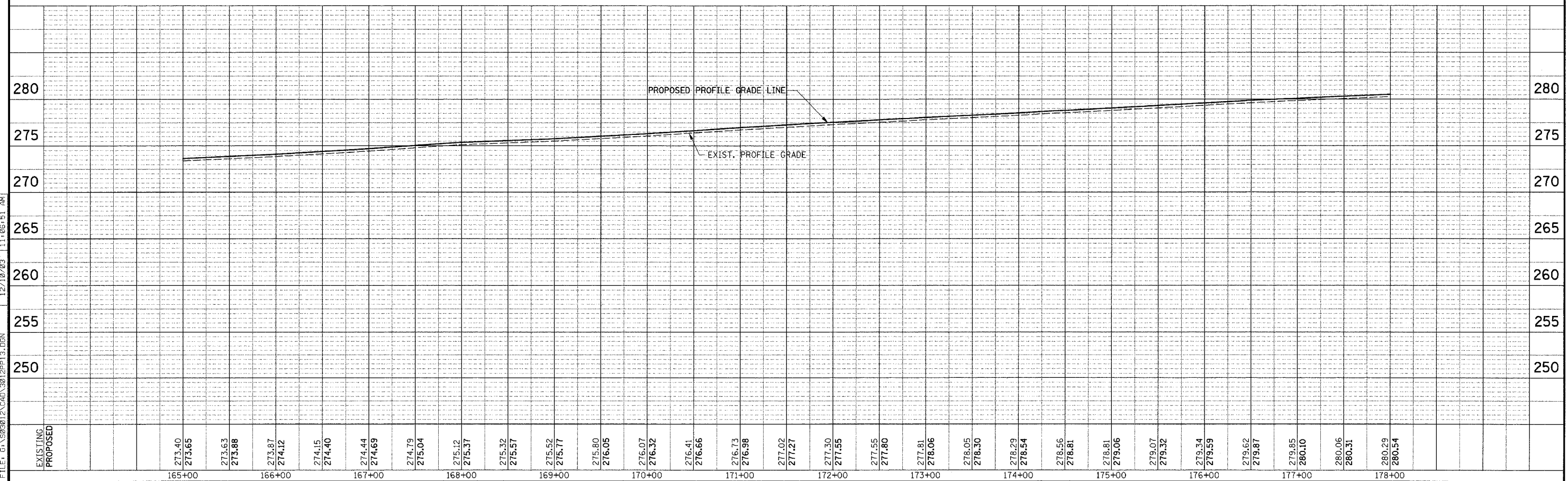
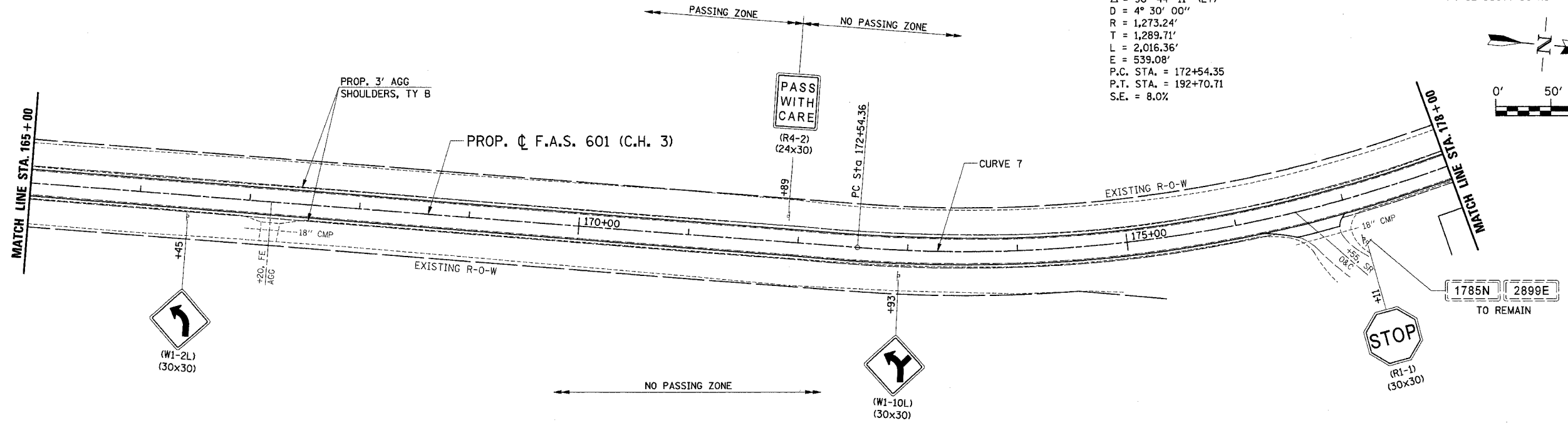
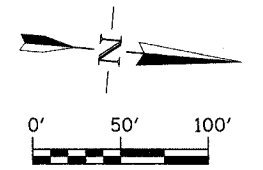


F.A.S. RTE.	SECTION	COUNTY	TOTAL SHEETS	SHEET NO.
601	(*)	PIKE	51	27
STA. 165+00		TO STA. 178+00		
FED. ROAD DIST. NO.	ILLINOIS	FED. AID PROJECT		

(*) 02-00077-00-RS

PROP. CURVE 7

PI STA. = 185+44.06
 $\Delta = 90^\circ 44' 11''$ (LT)
 $D = 4^\circ 30' 00''$
 $R = 1,273.24'$
 $T = 1,289.71'$
 $L = 2,016.36'$
 $E = 539.08'$
 P.C. STA. = 172+54.36
 P.T. STA. = 192+70.71
 S.E. = 8.0%



PLAN AND PROFILE - STA. 165+00 TO STA. 178+00

FILE: G:\NS03012\CAD\3012P13.DGN 12/10/03 11:06:51 AM