

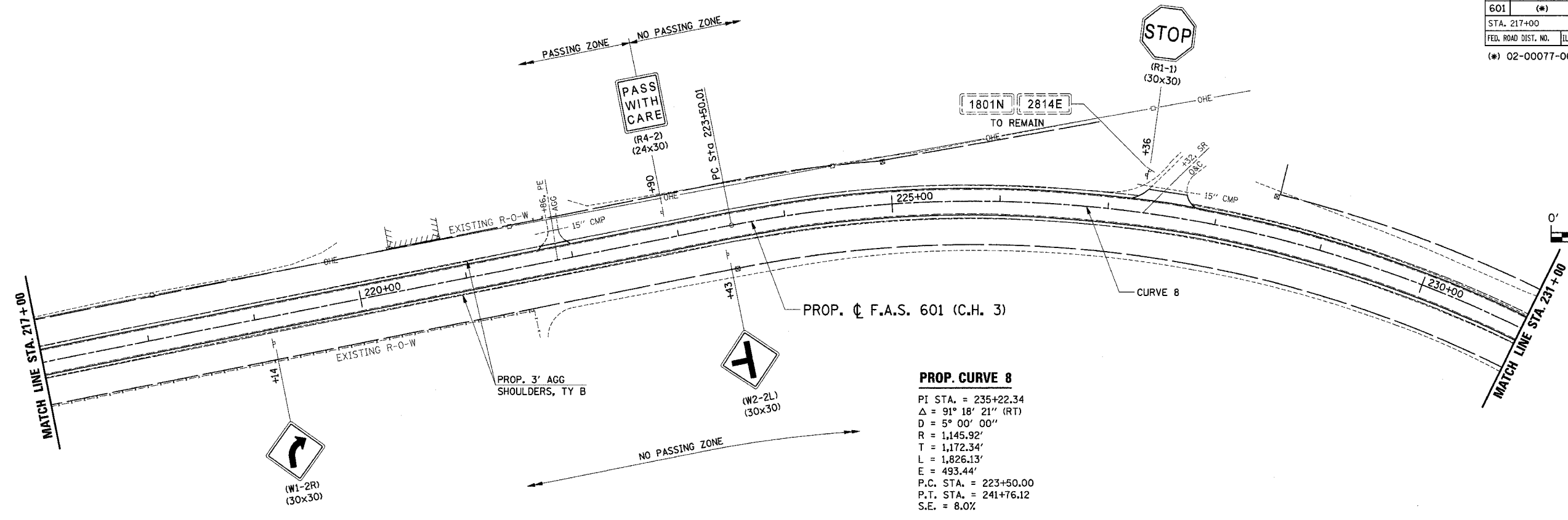
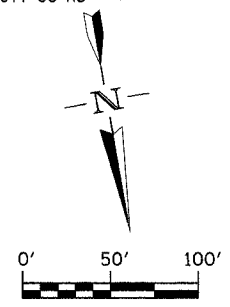
F.A.S. RTE.	SECTION	COUNTY	TOTAL SHEETS	SHEET NO.
601	(*)	PIKE	51	31
STA. 217+00		TO STA. 231+00		
FED. ROAD DIST. NO.	ILLINOIS	FED. AID PROJECT		

(* 02-00077-00-RS

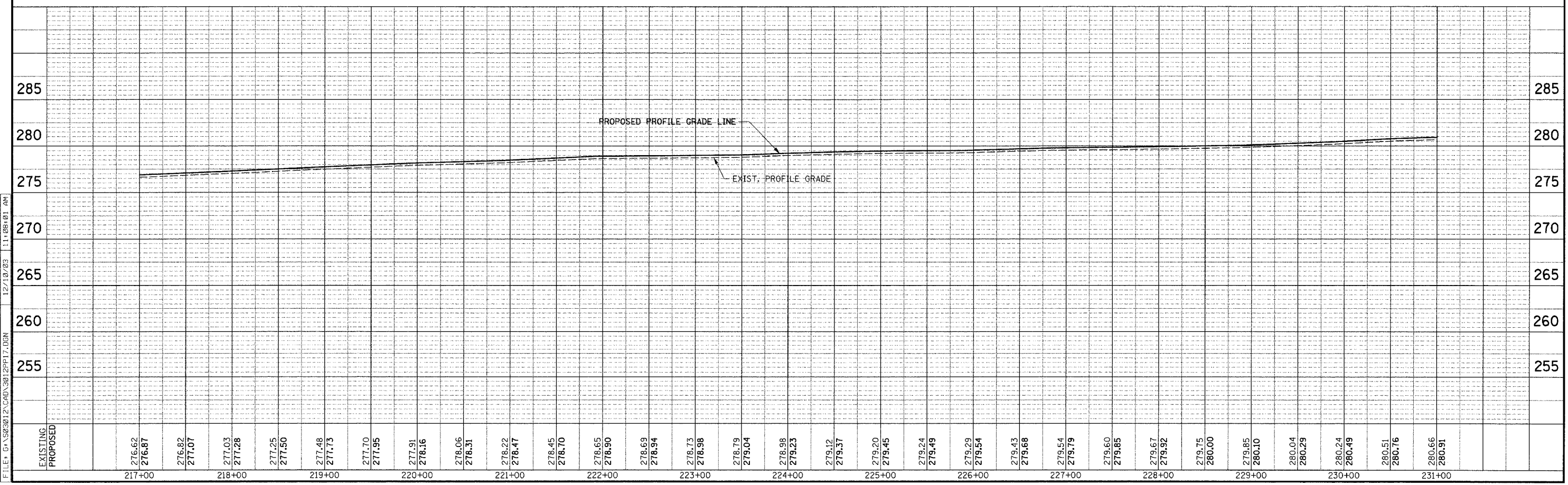


(R1-1)
(30x30)

1801N 2814E
TO REMAIN



PROP. CURVE 8
 PI STA. = 235+22.34
 Δ = 91° 18' 21" (RT)
 D = 5° 00' 00"
 R = 1,145.92'
 T = 1,172.34'
 L = 1,826.13'
 E = 493.44'
 P.C. STA. = 223+50.00
 P.T. STA. = 241+76.12
 S.E. = 8.0%



PLAN AND PROFILE - STA. 217+00 TO STA. 231+00

FILE: G:\5023012\CAD\3012P17.DGN 12/10/03 11:28:01 AM