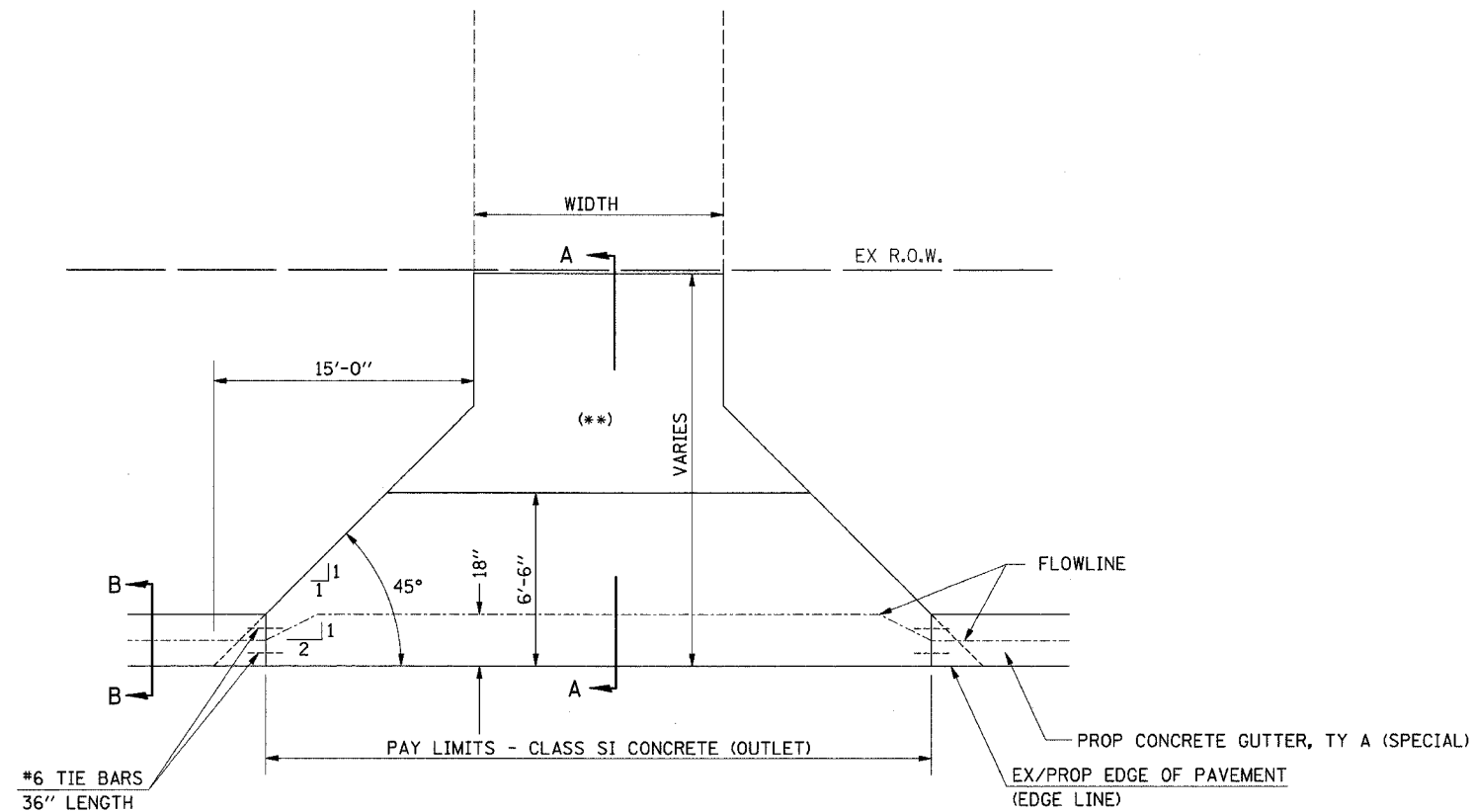


F.A.S. RTE.	SECTION	COUNTY	TOTAL SHEETS	SHEET NO.
601	(*)	PIKE	51	37
STA.		TO STA.		
FED. ROAD DIST. NO.	ILLINOIS	FED. AID PROJECT		

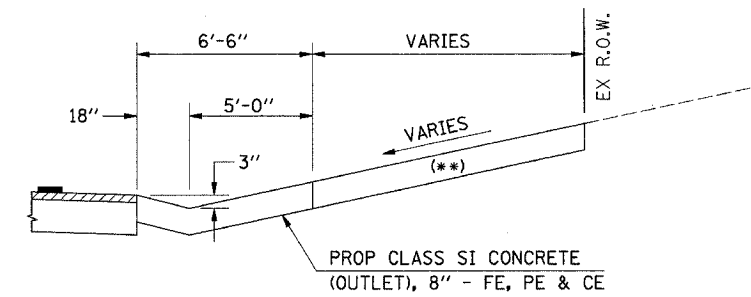
(*) 02-00077-00-RS



PLAN - RURAL FE, PE & CE

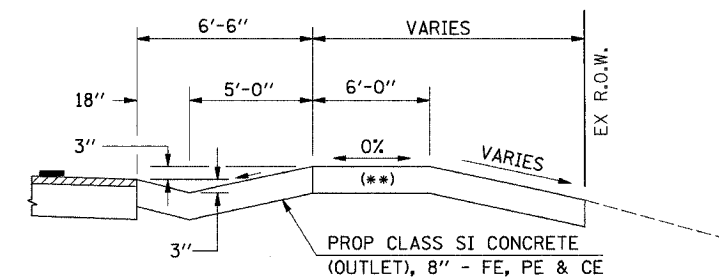
(THIS DETAIL OVERULES THE ENTRANCE DETAIL INCLUDED IN STD. 606101 ELSEWHERE HEREIN.)

(**) FOR EX EARTH OR AGGREGATE SURFACES :
 PROP AGGREGATE SURFACE COURSE, TYPE B 6" - PE/CE
 PROP BIT CONC 8" - CE



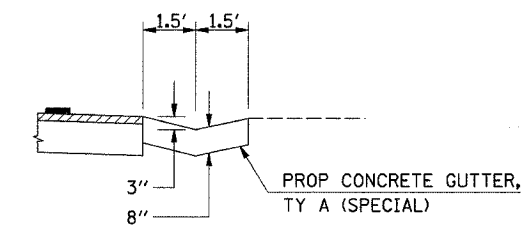
SECTION A - A

(CUT SECTION)



SECTION A - A

(FILL SECTION)



SECTION B - B

P:\FILE1\G:\503012\CADD\301200101A.DGN 12/10/03 01:44:07 PM

INTERNATIONAL ENGINEERING CONSULTANTS, INC. 6420 SOUTH SIXTH STREET SPRINGFIELD, ILLINOIS 62707 TEL. (217) 529-8027 FAX (217) 529-4543 IESPRINGFIELD@IE-CONSULTANTS.COM WWW.IE-CONSULTANTS.COM			
ENTRANCE DETAILS			
TYPE A GUTTER (SPECIAL)			
DRAWN BY: RG	CHECKED BY: CMS	DATE: 12-10-03	PROJECT: S03012