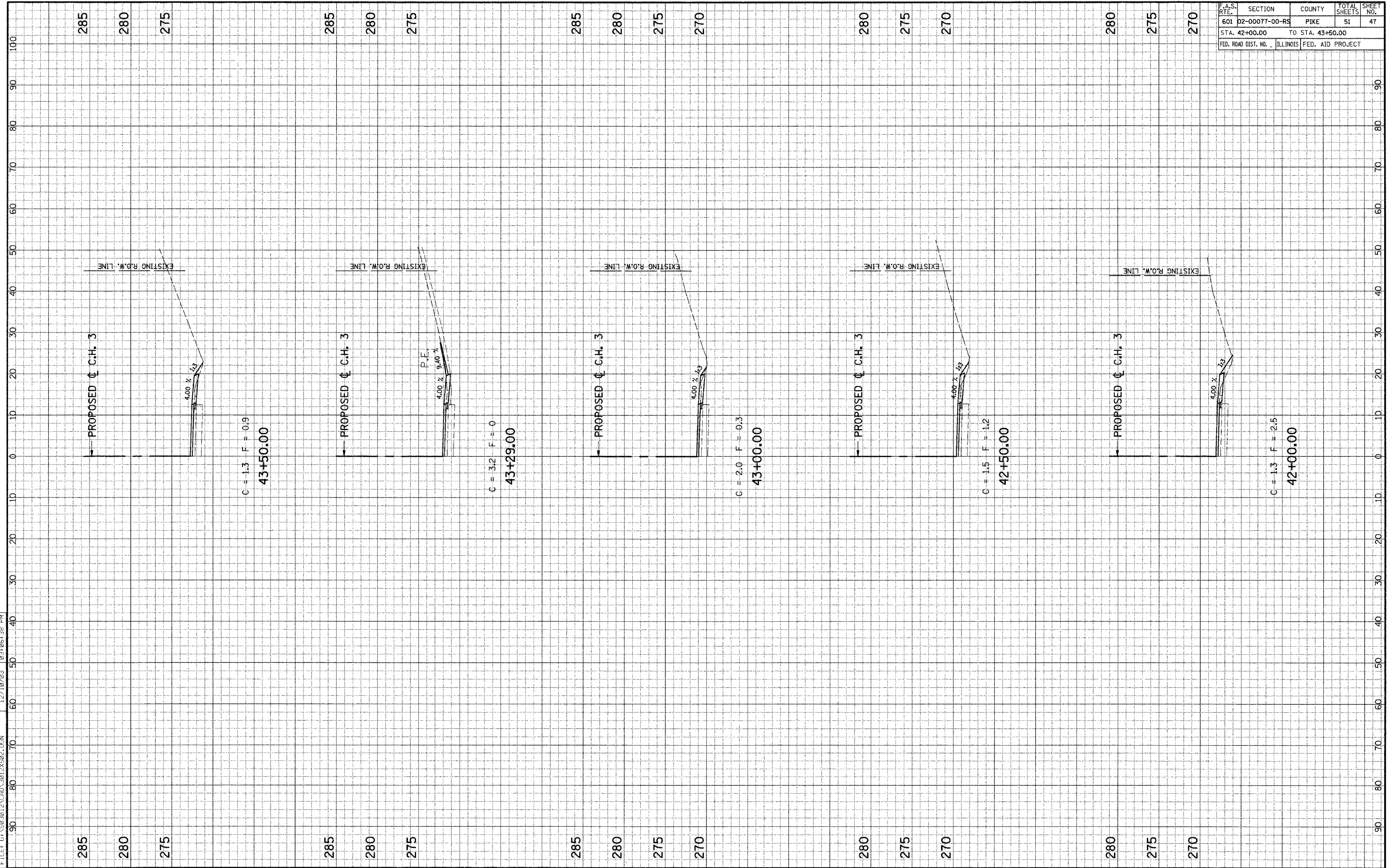


F.A.S. RTE.	SECTION	COUNTY	TOTAL SHEETS	SHEET NO.
601	D2-00077-00-RS	PIKE	51	47
STA. 42+00.00		TO STA. 43+50.00		
FED. ROAD DIST. NO.	ILLINOIS	FED. AID PROJECT		

FILE: G:\S03012\CD\40\3012\502.DSN 12/19/03 03:05:38 PM



285  
280  
275

285  
280  
275

C = 1.3 F = -0.9  
43+50.00

285  
280  
275

285  
280  
275

C = 3.2 F = 0  
43+29.00

285  
280  
275  
270

285  
280  
275  
270

C = 2.0 F = -0.3  
43+00.00

280  
275  
270

280  
275  
270

C = 1.5 F = -1.2  
42+50.00

280  
275  
270

280  
275  
270

C = 1.3 F = -2.5  
42+00.00