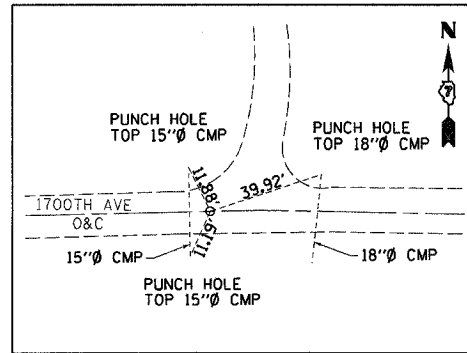
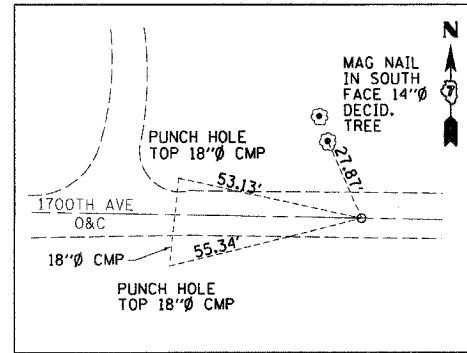


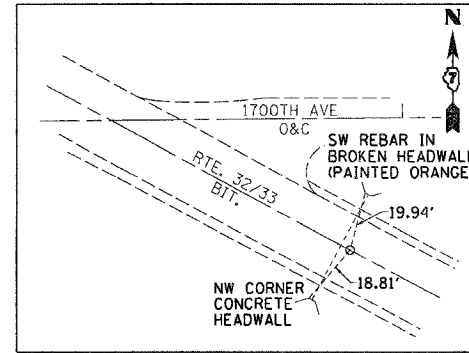
P.O.T. (SOUTH) (RELOCATED 1700TH AVENUE)
STA. 217+00.00
(MAG NAIL & FLAGGING)



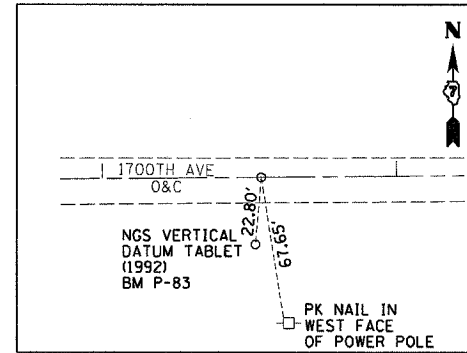
PC PROP. CURVE C71 (RELOCATED 1700TH AVENUE)
STA. 217+99.31
(MAG NAIL & FLAGGING)



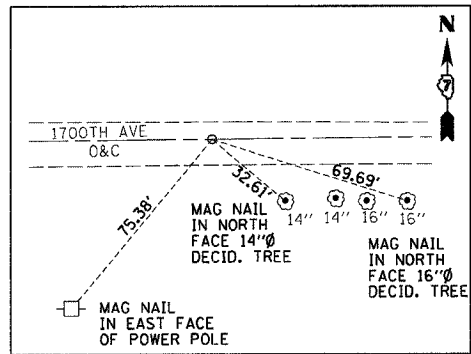
PI PROP. CURVE C71 (RELOCATED 1700TH AVENUE)
STA. 218+88.66
(MAG NAIL & FLAGGING)



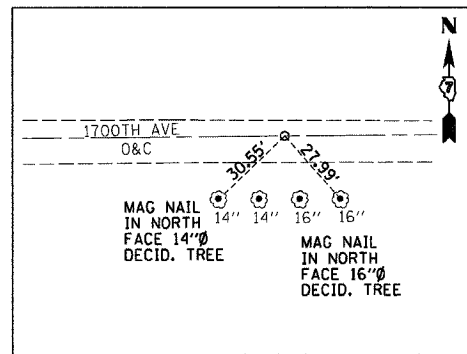
PRC PROP. CURVE C72 & PROP. CURVE C75
☉ RELOCATED 1700TH AVENUE STA. 223+07.85 =
☉ ROUTE 32/33 STA. 544+65.39
(MAG NAIL & FLAGGING)



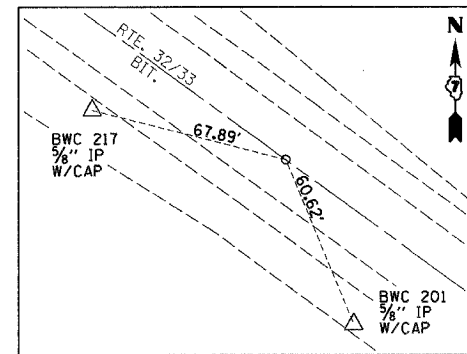
PI PROP. CURVE C75 (RELOCATED 1700TH AVENUE)
STA. 223+92.58
(MAG NAIL & FLAGGING)



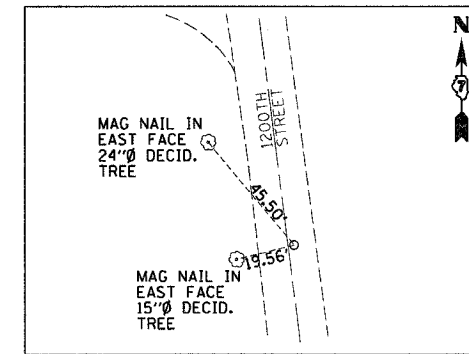
PT PROP. CURVE C75 (RELOCATED 1700TH AVENUE)
STA. 224+73.01
(MAG NAIL & FLAGGING)



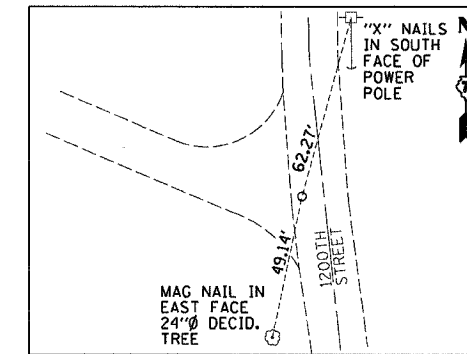
P.O.T. (NORTH) (RELOCATED 1700TH AVENUE)
STA. 225+23.01 BK = STA. 224+88.76 AH
(MAG NAIL & FLAGGING)



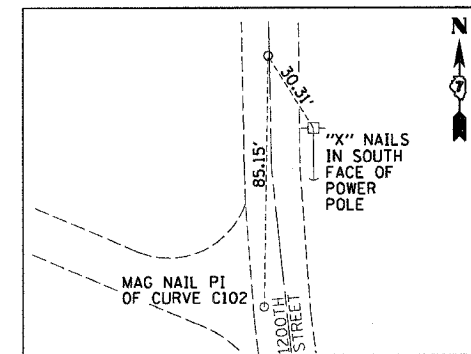
☉ RELOCATED 1200TH STREET STA. 200+00.00 =
☉ RTE. 32/33 STA. 1015+03.93
(MAG NAIL)



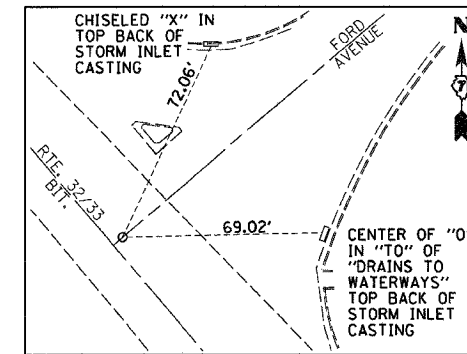
PC PROP. CURVE C102 (RELOCATED 1200TH STREET)
STA. 210+96.27
(MAG NAIL)



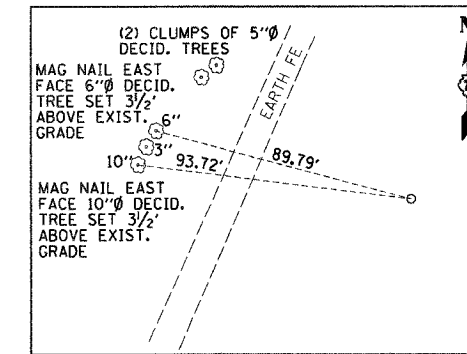
PI PROP. CURVE C102 (RELOCATED 1200TH STREET)
STA. 211+81.42
(MAG NAIL)



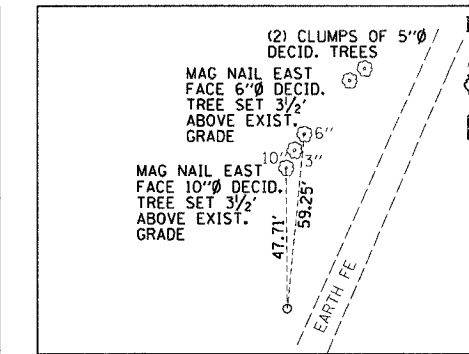
PT PROP. CURVE C102 (RELOCATED 1200TH STREET)
STA. 212+65.74
(MAG NAIL)



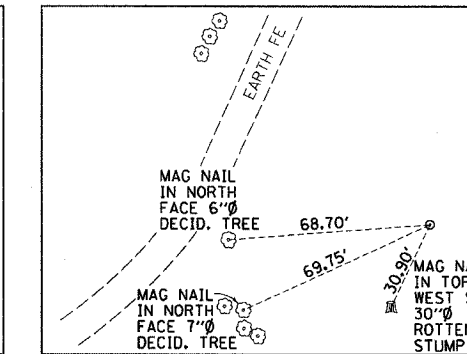
☉ PROP. FORD AVE. (SOUTH) STA. 185+00.00 =
☉ RTE. 32/33 STA. 42+30.72
(MAG NAIL & FLAGGING)



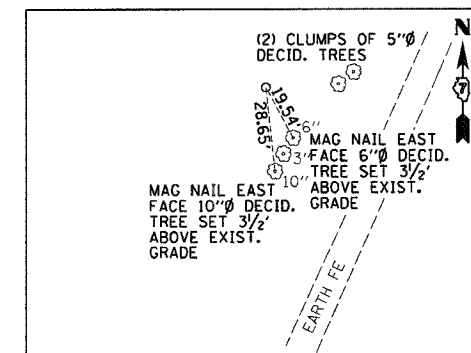
PC PROP. CURVE CR8C1 (PROP. FORD AVE. (SOUTH))
STA. 179+93.69
(5/8" IP W/ BWC CAP AT EXIST. GRADE)



PCC PROP. CURVE CR8C1 & PROP. CURVE CR8C2
PROP. FORD AVE. (SOUTH)
STA. 181+10.90
(5/8" IP W/ BWC CAP AT EXIST. GRADE)



PI OF PROP. CURVE CR8C1 (PROP. FORD AVE. (SOUTH))
STA. 180+82.52
(5/8" IP W/ BWC CAP AT EXIST. GRADE)



PT PROP. CURVE CR8C2 (PROP. FORD AVE. (SOUTH))
STA. 181+98.87
(5/8" IP W/ BWC CAP AT EXIST. GRADE)

REVISIONS	
NAME	DATE

ILLINOIS DEPARTMENT OF TRANSPORTATION

CONTROL TIES
AND BENCHMARKS
SHEET 2 OF 2

DATE 9/02

DRAWN BY NJV
CHECKED BY TLS