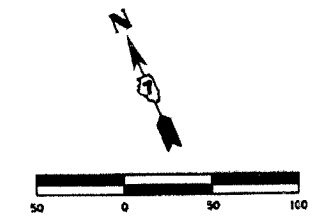
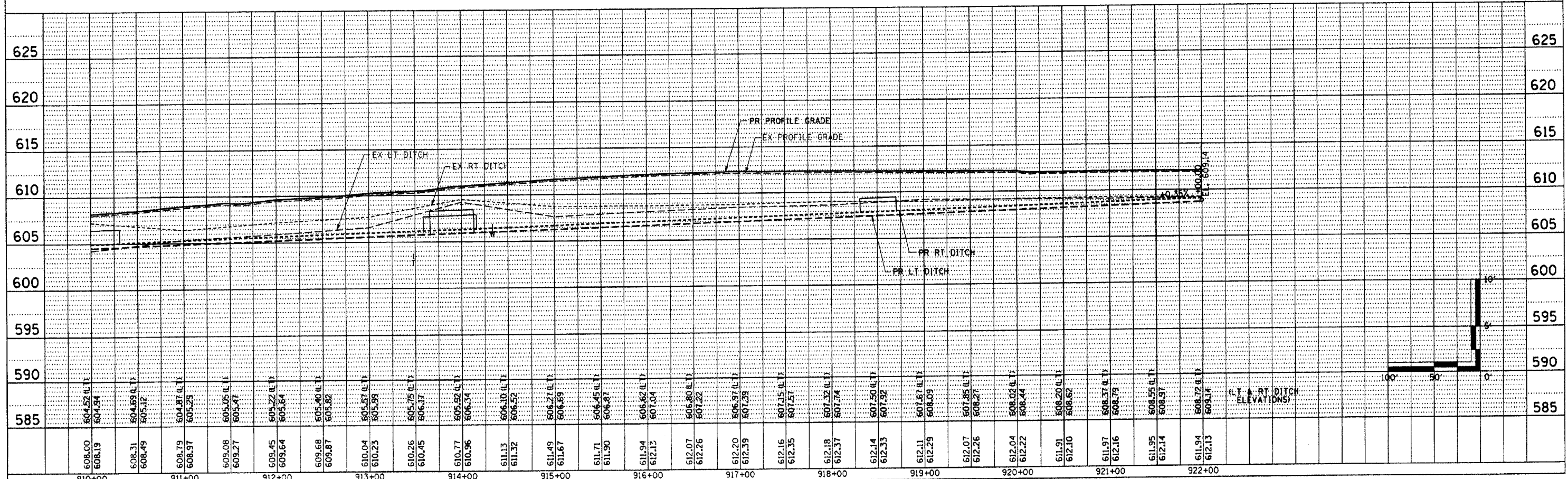
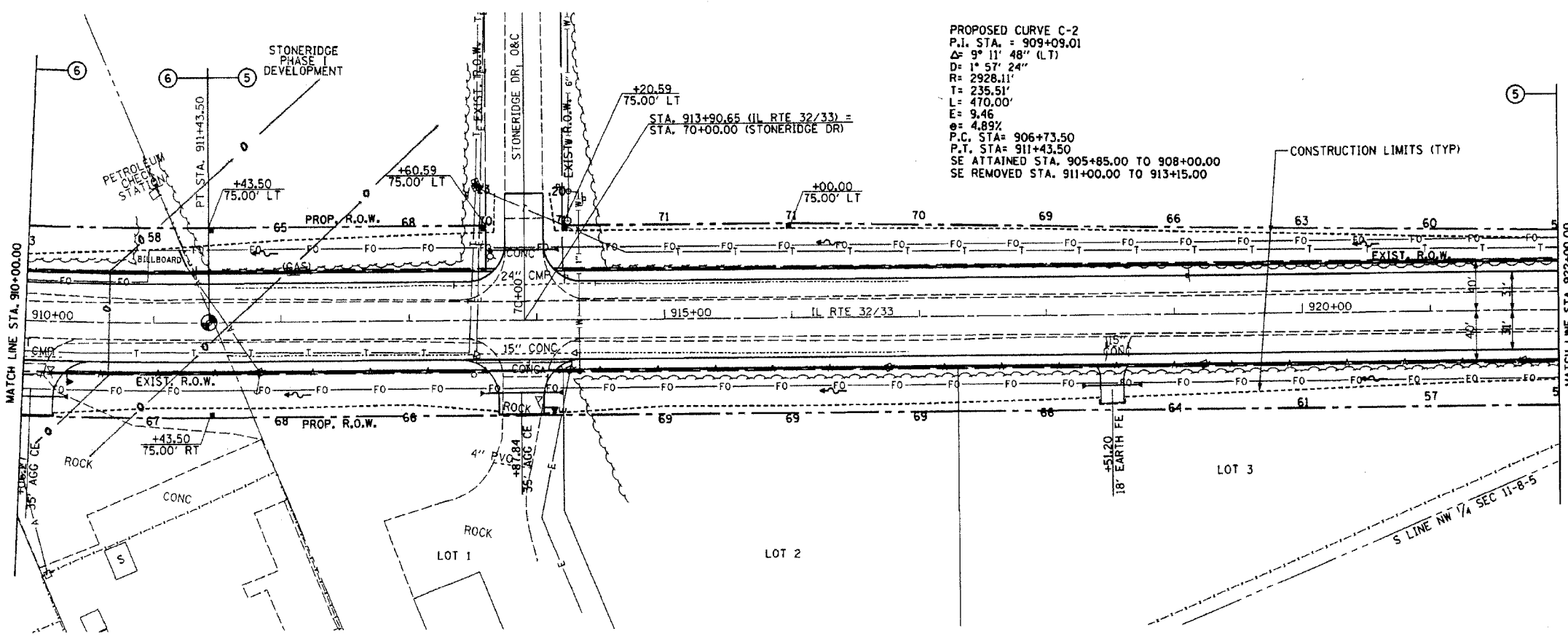


F.A.P. RTE.	SECTION	COUNTY	TOTAL SHEETS	SHEET NO.
774	*	EFFINGHAM	344	68
STA. 910+00.00 TO STA. 922+00.00				
FED. ROAD DIST. NO. 7 ILLINOIS FED. AID PROJECT				
* 107WRS-1, 107BY, 107BY-1 & 107B-2				
CONTRACT NO. 94827				



PERMANENT SURVEY MARKER, TYPE 1  
PT STA. 911+43.50 1 EACH

PROPOSED CURVE C-2  
P.I. STA. = 909+09.01  
 $\Delta = 9^\circ 11' 48''$  (LT)  
D = 1° 57' 24"  
R = 2926.11'  
T = 235.51'  
L = 470.00'  
E = 9.46'  
e = 4.89%  
P.C. STA = 906+73.50  
P.T. STA = 911+43.50  
SE ATTAINED STA. 905+85.00 TO 908+00.00  
SE REMOVED STA. 911+00.00 TO 913+15.00



MAIN LINE SHEET 5 OF 18

DATE	
BY	
PLAN	
REVISIONS	
NO.	
DESCRIPTION	
DATE	
BY	
DATE	
BY	

DATE	
BY	
PROFILE	
REVISIONS	
NO.	
DESCRIPTION	
DATE	
BY	
DATE	
BY	

15926a (11/21/2004) (11/21/2004) (11/21/2004)