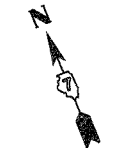
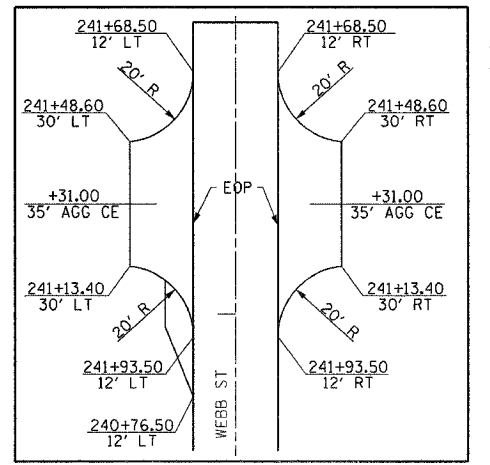
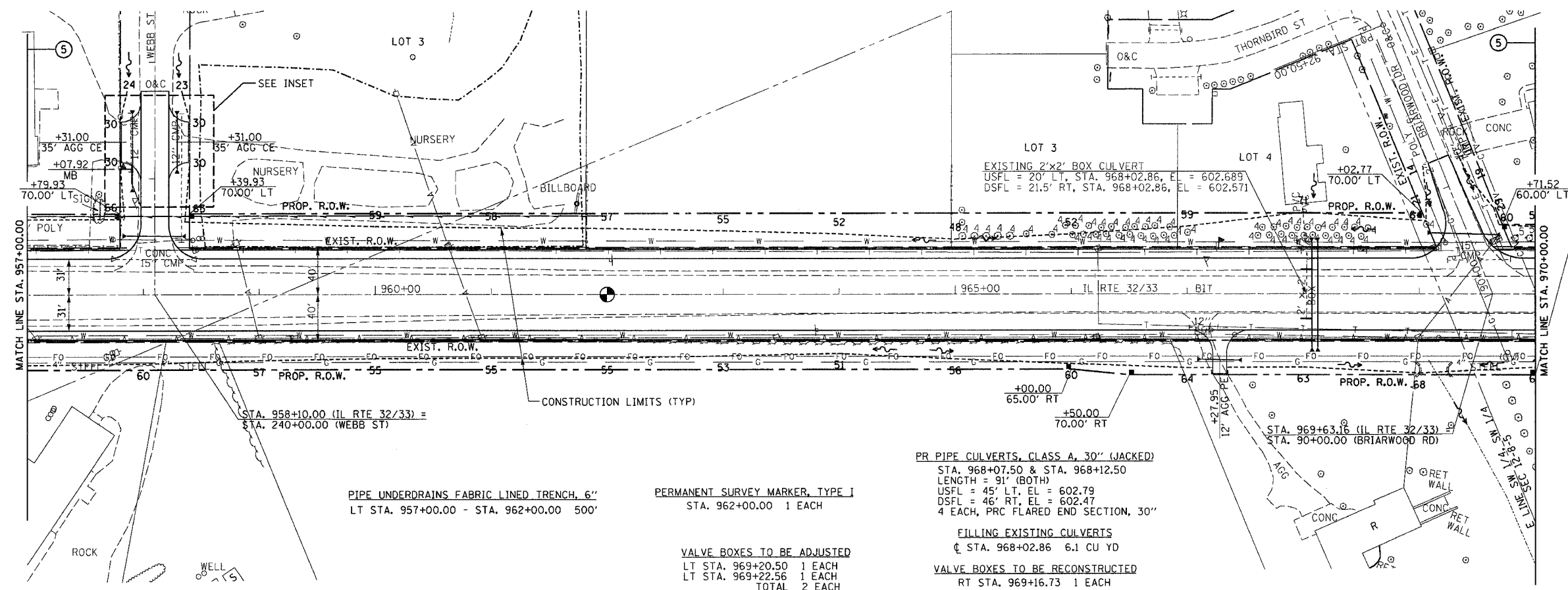


F.A.P. RTE.	SECTION	COUNTY	TOTAL SHEETS	SHEET NO.
774		EFFINGHAM	344	72
STA. 957+00.00 TO STA. 970+00.00				
FED. ROAD DIST. NO. 7 ILLINOIS FED. AID PROJECT				
• 107WRS-1, 107BY, 107BY-1 & 107B-2				
CONTRACT NO. 94827				



DATE	BY
DATE	BY
DATE	BY

DATE	BY
DATE	BY
DATE	BY



PIPE UNDERDRAINS FABRIC LINED TRENCH, 6"
LT STA. 957+00.00 - STA. 962+00.00 500'

PERMANENT SURVEY MARKER, TYPE I
STA. 962+00.00 1 EACH

VALVE BOXES TO BE ADJUSTED
LT STA. 969+20.50 1 EACH
LT STA. 969+22.56 1 EACH
TOTAL 2 EACH

PR PIPE CULVERTS, CLASS A, 30" (JACKED)
STA. 968+07.50 & STA. 968+12.50
LENGTH = 91' (BOTH)
USFL = 45' LT, EL = 602.79
DSFL = 46' RT, EL = 602.47
4 EACH, PRC FLARED END SECTION, 30"

FILLING EXISTING CULVERTS
STA. 968+02.86 6.1 CU YD

VALVE BOXES TO BE RECONSTRUCTED
RT STA. 969+16.73 1 EACH

