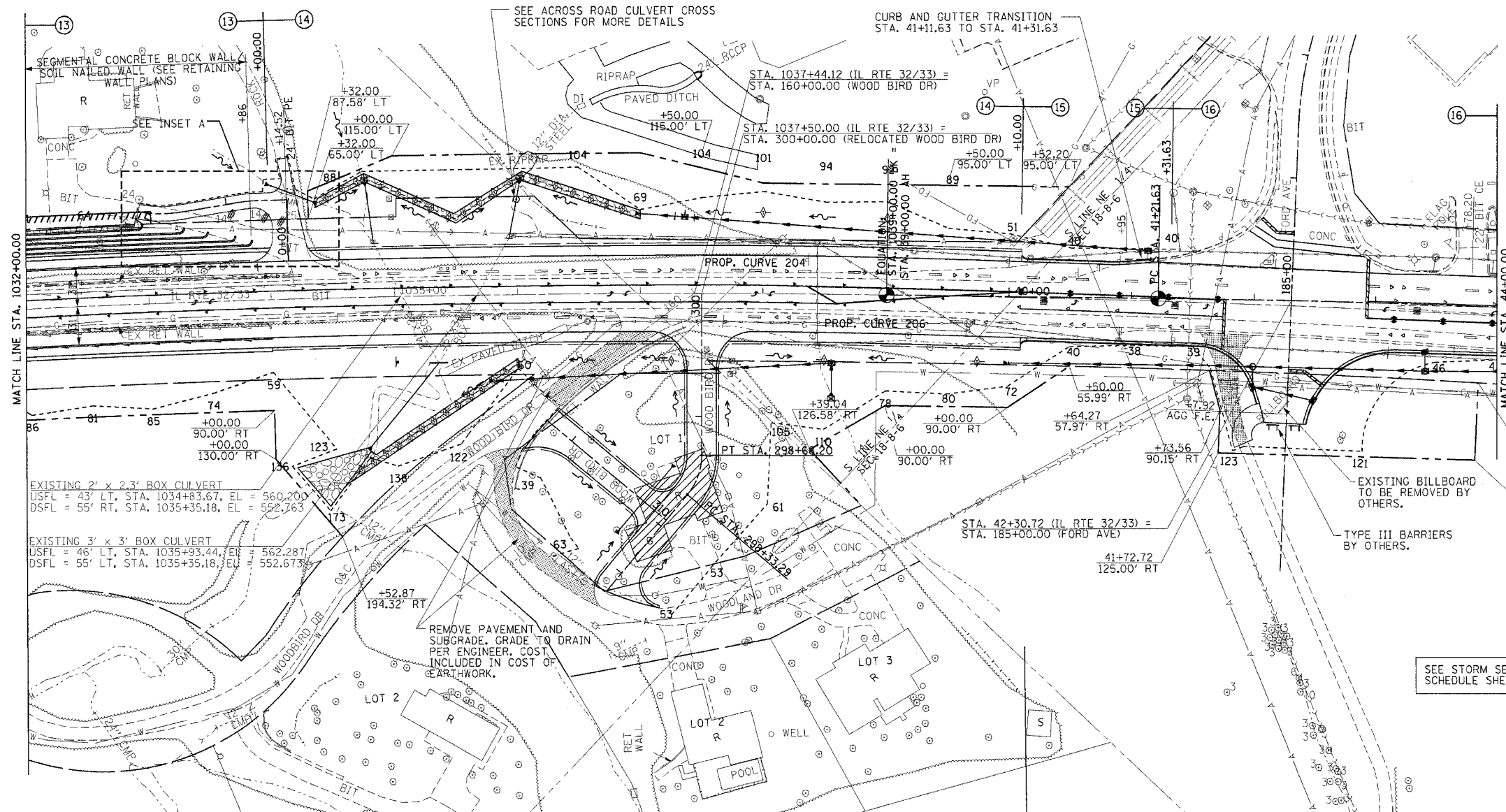
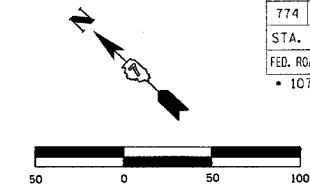


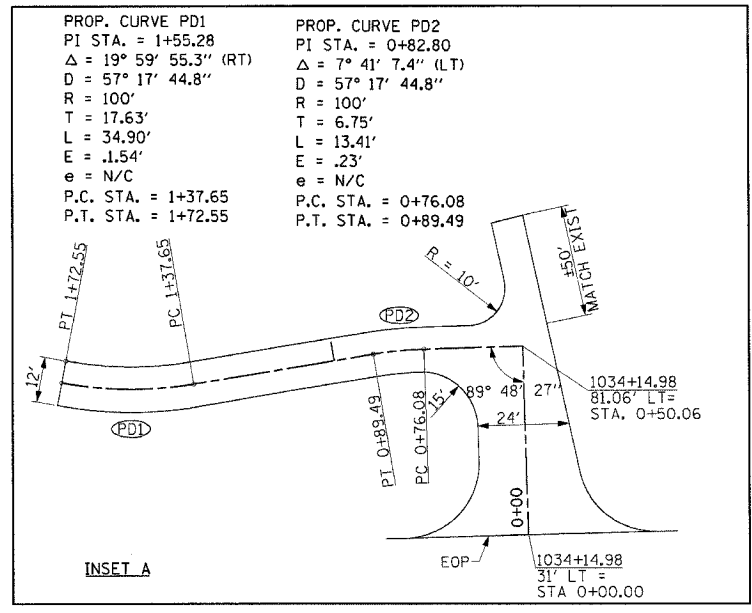
F.A.P. RTE.	SECTION	COUNTY	TOTAL SHEETS	SHEET NO.
774		EFFINGHAM	344	79
STA. 1032+00.00 TO STA. 44+00.00				
FED. ROAD DIST. NO. 7 ILLINOIS FED. AID PROJECT				
• 107WRS-1, 107BY, 107BY-1 & 107B-2				
<b>CONTRACT NO. 94827</b>				



PLAN	DATE
SURVEYED	
ALIGNED	
CHECKED	
CAD FILE NAME	

PROFILE	DATE
SURVEYED	
GRADES CHECKED	
MANHOLE	
STRUCTURE NOTATIONS	

- BUILDING REMOVAL NO. 1**  
RT STA. 1037+00.00 1 L SUM
- PERMANENT SURVEY MARKERS, TYPE I**  
PT STA. 1039+00.00 1 EACH  
PC STA. 41+21.63 1 EACH  
TOTAL 2 EACH
- RETAINING WALL REMOVAL**  
LT STA. 1032+00.00 - STA. 1034+17.00 725 SQ FT  
RT STA. 1032+00.00 - STA. 1033+99.00 665 SQ FT  
RT STA. 158+88.19 - STA. 159+77.78 515 SQ FT  
TOTAL 1905 SQ FT
- CONCRETE GUTTER, TYPE A**  
LT STA. 1032+00.00 - STA. 1034+00.00 200'  
RT STA. 1032+00.00 - STA. 1034+00.00 200'  
TOTAL 400'
- COMBINATION CONCRETE CURB AND GUTTER, TYPE B-6.24**  
LT STA. 40+10.00 - STA. 41+31.63 122'  
RT STA. 40+10.00 - STA. 41+31.63 122'  
RT STA. 41+31.63 - STA. 41+50.00 18'  
RT STA. 43+56.71 - STA. 44+00.00 43'  
LT STA. 184+16.00 - STA. 184+65.00 83'  
RT STA. 184+00.00 - STA. 184+65.00 144'  
TOTAL 532'
- PAVED DITCH REMOVAL**  
RT STA. 1035+40.25 - STA. 1036+41.26 101'
- COMBINATION CURB AND GUTTER REMOVAL**  
LT STA. 40+95.00 - STA. 41+31.63 37'  
RT STA. 41+03.79 - STA. 44+00.00 296'  
TOTAL 333'
- GUTTER OUTLET REMOVAL**  
RT STA. 40+88.77 - STA. 41+03.79 1 EACH
- ISLAND PAVEMENT REMOVAL AND REPLACEMENT**  
LT STA. 42+04.53 - STA. 42+17.16 97 SQ FT
- MEDIAN REMOVAL PARTIAL DEPTH**  
STA. 43+16.00 - STA. 44+00.00 346 SQ FT
- PCBC 4'x3' EXTENSION (CULVERT NO. 3)**  
STA. 1034+79.00  
LENGTH = 85' RT  
DSFL = 121' RT, EL = 551.40  
(SEE SHEET 139 FOR CONCRETE COLLAR DETAILS)
- BOX CULVERT END SECTION, CULVERT NO. 3**  
RT STA. 1034+79.00 1 EACH
- PCBC 2'x2' EXTENSION (CULVERT NO. 4)**  
STA. 1034+78.00  
LENGTH = 45' LT  
USFL = 90' LT, EL = 567.50
- BOX CULVERT END SECTION, CULVERT NO. 4**  
LT STA. 1034+81.00 1 EACH
- PCBC 3'x3' EXTENSION (CULVERT NO. 5)**  
STA. 1036+00.00  
LENGTH = 30' LT  
USFL = 75' LT, EL = 560.00
- MH, TA, 6' DIA, TIF, CL**  
STA. 1036+00.00, 78' LT  
TOP OF LID EL = 573.00
- PIPE CULVERTS, CLASS A, TYPE 1, 36"**  
LENGTH = 12'  
USFL = 90' LT, STA. 1036+00.00, EL = 570.20  
DSFL = 78' LT, STA. 1035+98.29, EL = 570.00  
1 EACH, PRC FLARED END SECTION, 36"
- PIPE UNDERDRAIN REMOVAL**  
RT STA. 1032+00.00 - STA. 1034+62.00 262'
- PIPE UNDERDRAINS FABRIC LINED TRENCH, 6"**  
LT STA. 1032+00.00 - STA. 1033+85.00 185'  
RT STA. 1032+00.00 - STA. 1034+00.00 200'  
TOTAL 385'
- INLETS TO BE ADJUSTED WITH NEW TYPE 3 FRAME AND GRATE**  
LT STA. 41+21.61 1 EACH
- REMOVING MANHOLES**  
RT STA. 1036+57.05 1 EACH  
LT STA. 1038+43.86 1 EACH  
LT STA. 39+22.58 1 EACH  
RT STA. 39+67.38 1 EACH  
LT STA. 40+17.22 1 EACH  
RT STA. 40+89.70 1 EACH  
TOTAL 6 EACH
- REMOVING INLETS**  
RT STA. 1038+44.28 1 EACH  
RT STA. 40+91.03 1 EACH  
RT STA. 43+65.32 1 EACH  
TOTAL 3 EACH
- FLARED END SECTION REMOVAL**  
RT STA. 1036+44.26 1 EACH
- STORM SEWER REMOVAL, 12"**  
RT STA. 40+89.70 8'
- STORM SEWER REMOVAL, 15"**  
RT STA. 43+65.32 9'
- STORM SEWER REMOVAL, 24"**  
RT STA. 39+67.38 - STA. 40+89.70 123'  
RT STA. 40+89.70 - STA. 44+00.00 309'  
TOTAL 432'
- STORM SEWER TO BE FILLED**  
RT STA. 1036+44.26 - STA. 39+67.38 37.6 CU YDS  
LT STA. 1035+96.30 - STA. 39+22.58 38.4 CU YDS  
LT & RT STA. 1038+43.86 - STA. 1038+44.28 5.4 CU YDS  
LT & RT STA. 1038+43.86 - STA. 39+86.99 10.8 CU YDS  
LT STA. 39+22.58 - STA. 41+12.80 22.3 CU YDS  
TOTAL 114.5 CU YDS



- PROP. CURVE PD1**  
PI STA. = 1+55.28  
 $\Delta = 19^\circ 59' 55.3''$  (RT)  
D = 57' 17" 44.8"  
R = 100'  
T = 17.63'  
L = 34.90'  
E = .154'  
e = N/C  
P.C. STA. = 1+37.65  
P.T. STA. = 1+72.55
- PROP. CURVE PD2**  
PI STA. = 0+82.80  
 $\Delta = 7^\circ 41' 7.4''$  (LT)  
D = 57' 17" 44.8"  
R = 100'  
T = 6.75'  
L = 13.41'  
E = .23'  
e = N/C  
P.C. STA. = 0+76.08  
P.T. STA. = 0+89.49
- PROP. CURVE PROP5**  
PI STA. = 1014+09.68  
 $\Delta = 25^\circ 19' 45''$  (RT)  
D = 0' 30' 00"  
R = 11,456.75'  
T = 2,574.44'  
L = 5,064.76'  
E = 285.69'  
e = 1.56 %  
P.C. STA. = 988+35.24  
P.T. STA. = 1039+00.00  
SE ATTAINED STA. 985+70.00 TO STA. 989+00.00  
SE REMOVED STA. 1025+00.00 TO STA. 1026+75.00
- EXIST. CURVE C-3**  
P.I. STA. = 1034+75.4  
 $\Delta = 44^\circ 02' 00''$   
D = 0' 30' 00"  
R = 11459.2  
T = 4633.6  
L = 8806.7  
E = 901.4  
e = 1.55%  
P.C. STA. = 988+41.2  
P.T. STA. = 1076+42.9
- PROP. CURVE PROP4-2**  
PI STA. = 45+21.11  
 $\Delta = 4^\circ 27' 29''$  (RT)  
D = 0' 33' 30"  
R = 10,263.16'  
T = 399.48'  
L = 798.55'  
E = 7.77'  
e = N/C  
P.C. STA. = 41+21.63  
P.T. STA. = 49+20.18
- PROP. CURVE 204**  
PI STA. = 1038+75.89 31.34' LT  
 $\Delta = 1^\circ 49' 59''$  (RT)  
D = 0' 53' 48"  
R = 6,389.96'  
T = 102.23'  
L = 204.43'  
E = 0.82'  
P.C. STA. = 1037+88.27 31.00' LT  
P.T. STA. = 39+63.67 29.59' LT
- PROP. CURVE 206**  
PI STA. = 1038+77.43 30.71' RT  
 $\Delta = 1^\circ 38' 23''$  (RT)  
D = 0' 57' 54"  
R = 5,938.00'  
T = 84.98'  
L = 169.95'  
E = 0.61'  
P.C. STA. = 1037+92.22 31.00' RT  
P.T. STA. = 39+62.46 32.39' RT