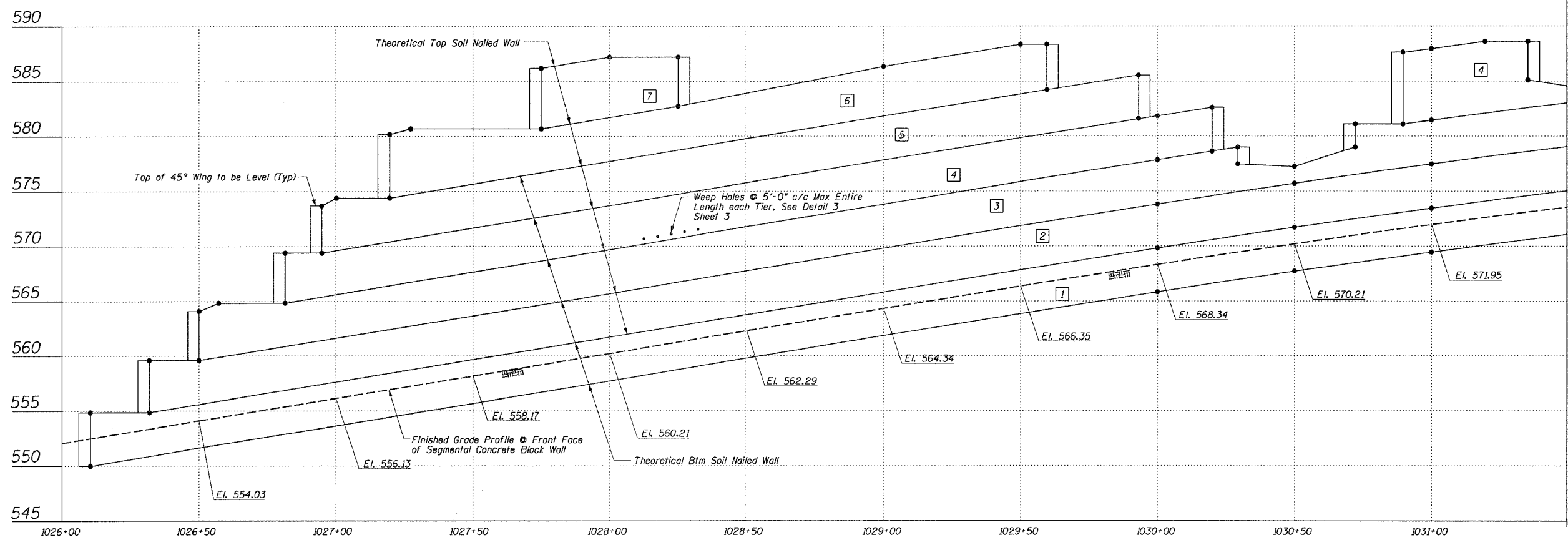
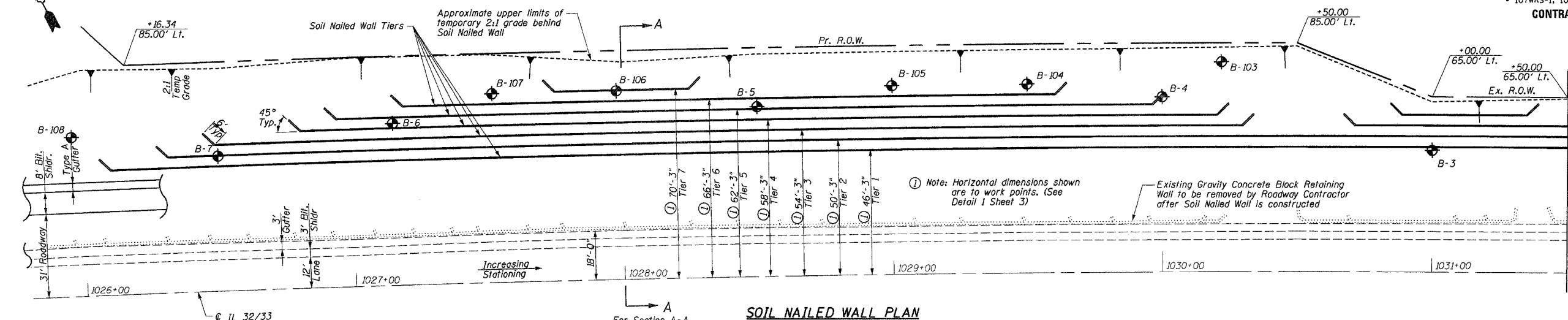


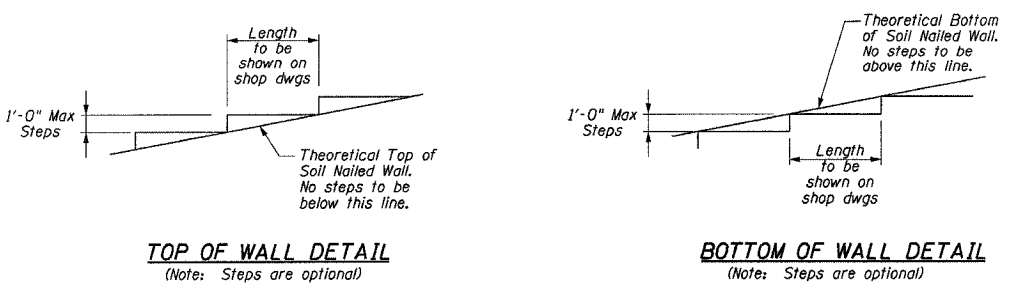
STATE OF ILLINOIS
DEPARTMENT OF TRANSPORTATION

F.A.P. RTE.	SECTION	COUNTY	TOTAL SHEETS	SHEET NO.	SHEET NO. 2 OF 14 SHEETS
774		EFFINGHAM	344	121	
FED. ROAD DIST. NO. 7	ILLINOIS FED. AID PROJECT				
107WRS-1, 107BY, 107B-1 & 107B-2			CONTRACT NO. 94827		



LEGEND

- Denotes Work Point. See Sheet 6 for Wall Elevations.
- Denotes Tier No.



BILL OF MATERIAL - SOIL NAILED WALL

ITEM	UNIT	QUANTITY
EARTH EXCAVATION (SPECIAL)	CU YD	13,527
* GEOCOMPOSITE WALL DRAIN	SO YD	490
SOIL NAILED WALL	SO FT	14,690

* Estimated Quantity is based on 1'-6" wide Geocomposite Wall Drain Strip at 5'-0" center to center spacing.

SOIL NAILED WALL
ILLINOIS ROUTE 32/33
F.A.P. ROUTE 774
SECTION 107 WRS-1, 107BY,
107BY-1 & 107B-2
EFFINGHAM COUNTY
RETAINING WALL
STA. 1026+03.00 LT. TO STA. 1033+86.00 LT.
STRUCTURE NUMBER 025-W00B