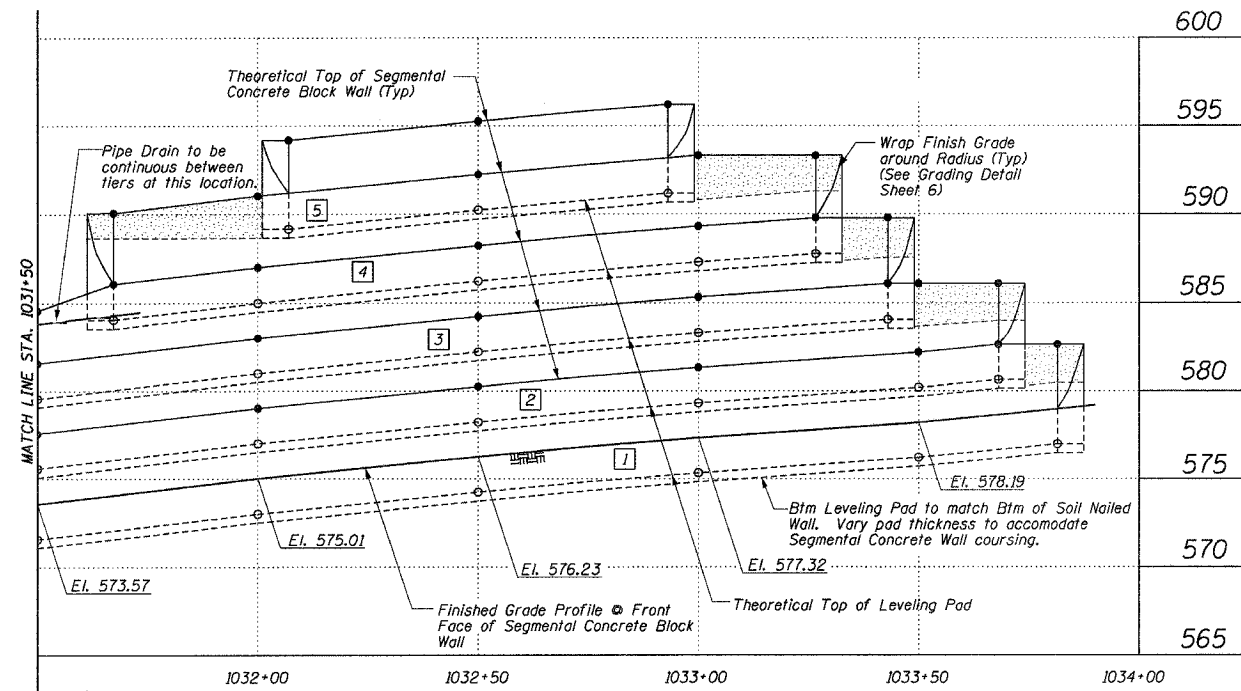
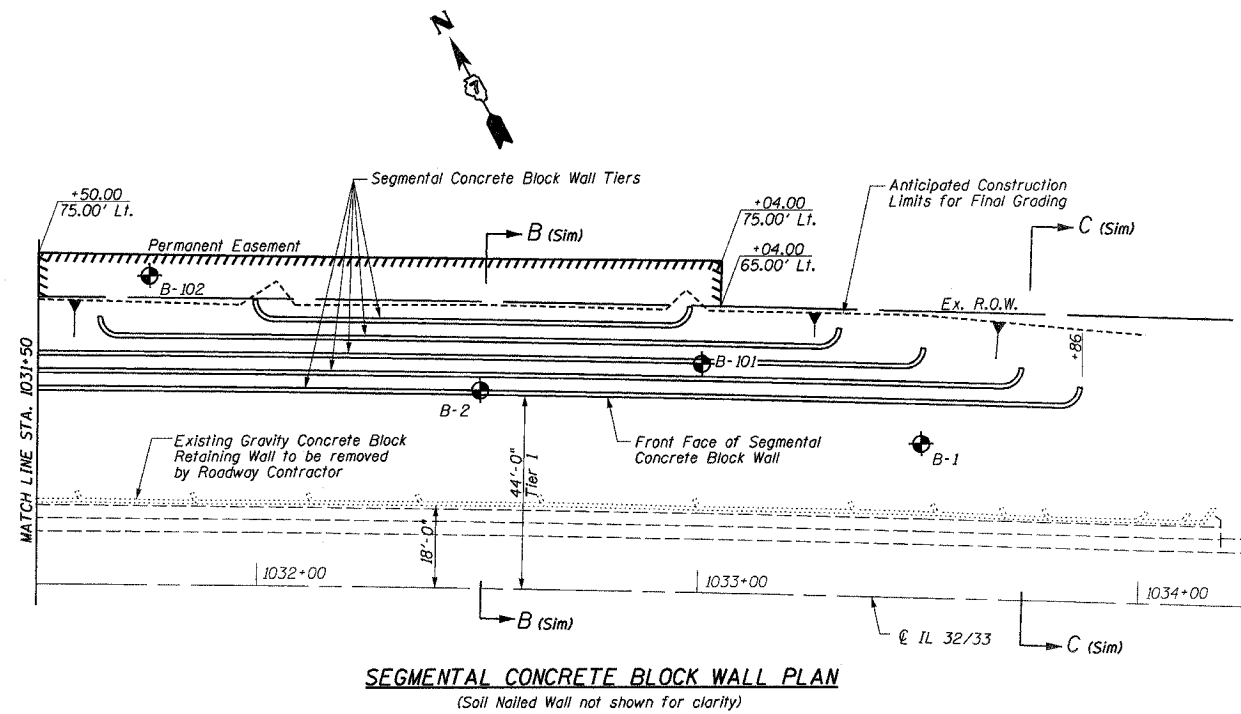
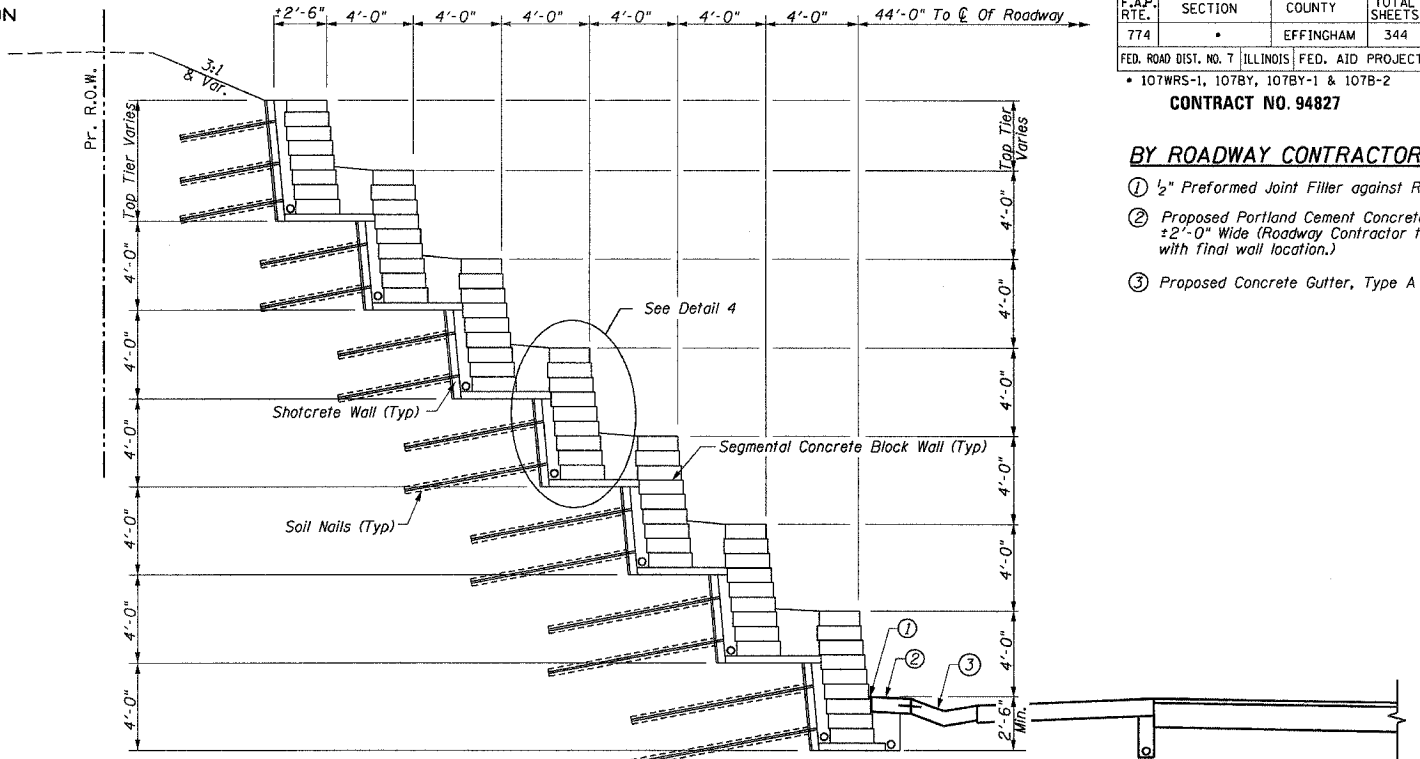


STATE OF ILLINOIS
DEPARTMENT OF TRANSPORTATION

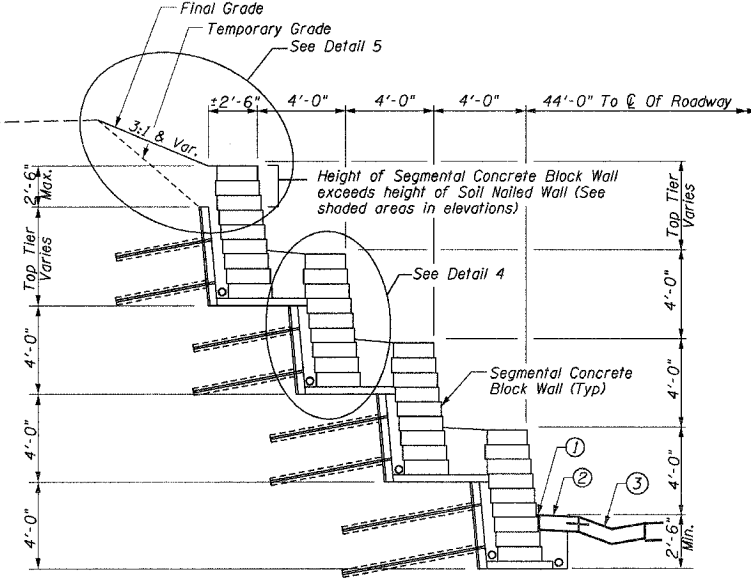


- LEGEND**
- Denotes Top of Wall Work Point.
 - Denotes Btm of Wall Work Point
 - See Sheet 6 for Wall Elevations.
 - Area where height of Segmental Concrete Block Wall exceeds height of Soil Nailed Wall. See Section C-C.
 - Denotes Tier No.

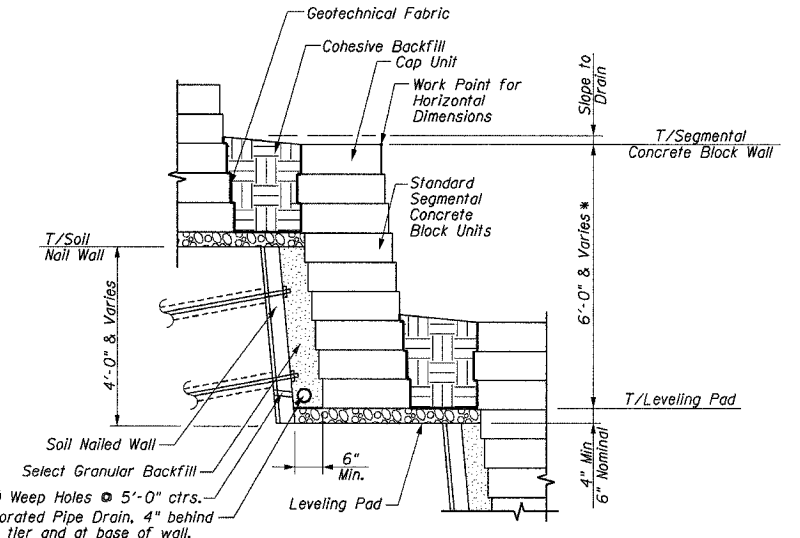
SEGMENTAL CONCRETE BLOCK WALL ELEVATION



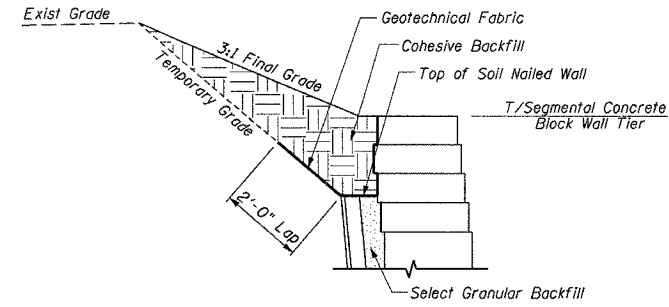
SECTION B-B
TYPICAL TIERED RETAINING WALL
(Sta. 1028+00.00 Shown, Others Similar)



SECTION C-C
TYPICAL TIERED RETAINING WALL
(Sta. 1030+00.00 Shown, Others Similar)



DETAIL 4
Typical Segmental Concrete Block Wall Tier



DETAIL 5

F.A.P. RTE.	SECTION	COUNTY	TOTAL SHEETS	SHEET NO.
774		EFFINGHAM	344	124
FED. ROAD DIST. NO. 7 ILLINOIS FED. AID PROJECT				
• 107WRS-1, 107BY, 107BY-1 & 107B-2				

CONTRACT NO. 94827

- BY ROADWAY CONTRACTOR:**
- ① 1/2" Preformed Joint Filler against Retaining Wall
 - ② Proposed Portland Cement Concrete Shoulder, 6" ±2'-0" Wide (Roadway Contractor to coordinate with final wall location.)
 - ③ Proposed Concrete Gutter, Type A

SEGMENTAL CONCRETE BLOCK WALL
ILLINOIS ROUTE 32/33
F.A.P. ROUTE 774
SECTION 107 WRS-1, 107BY,
107BY-1 & 107B-2
EFFINGHAM COUNTY
RETAINING WALL
STA. 1026+03.00 LT. TO STA. 1033+86.00 LT.
STRUCTURE NUMBER 025-W008