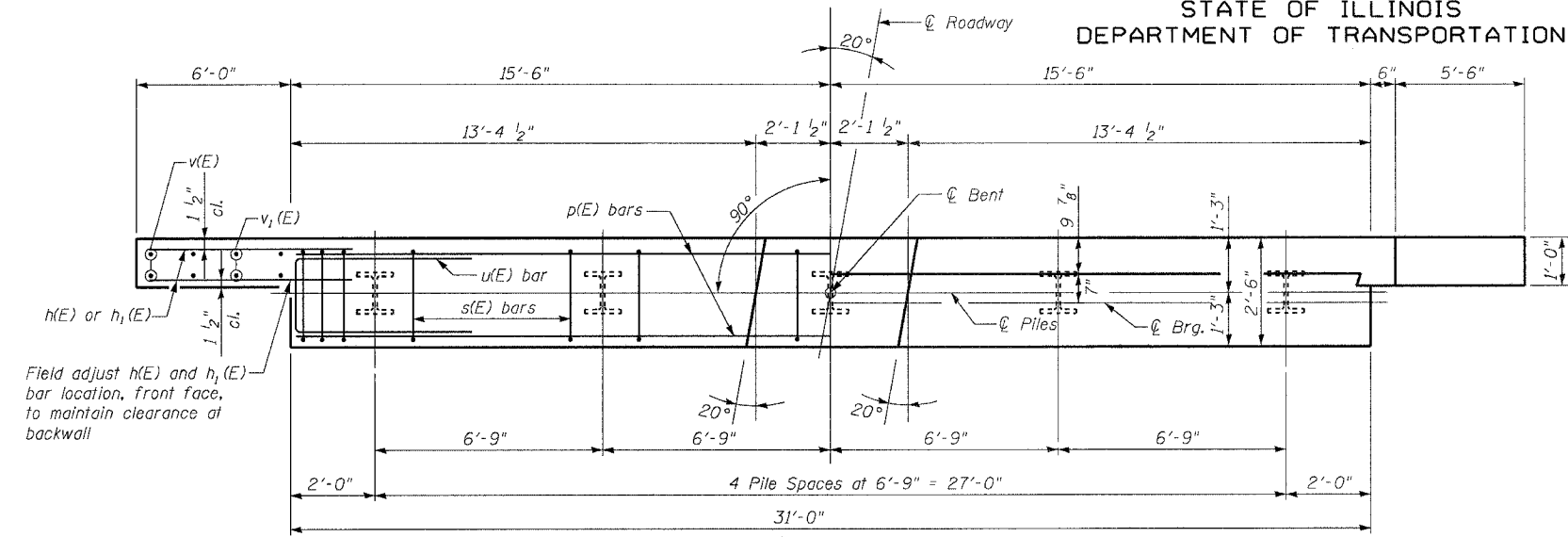


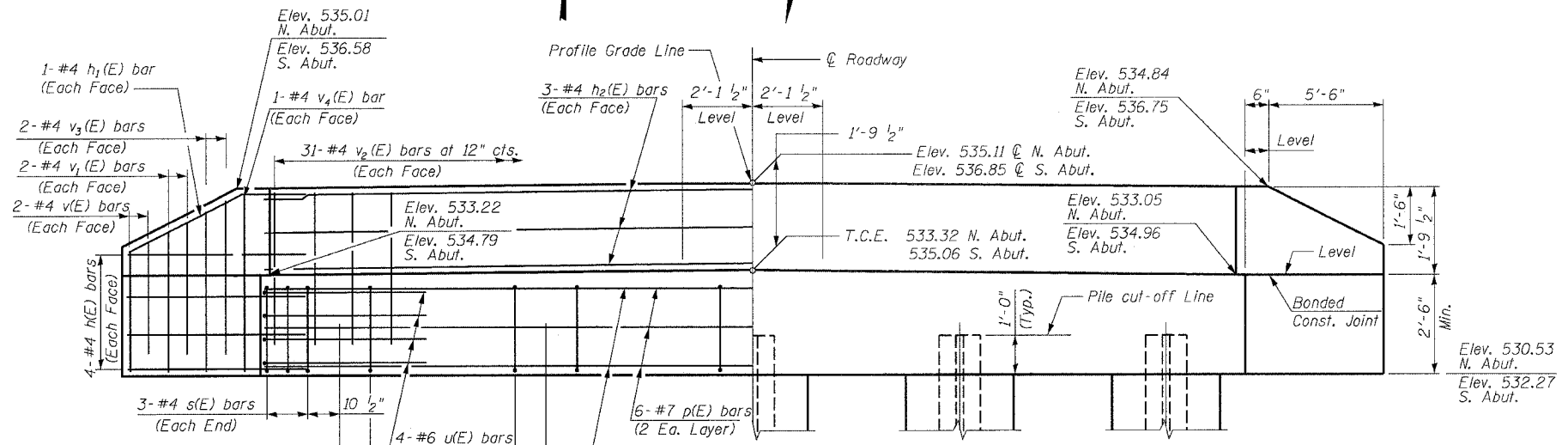
STATE OF ILLINOIS
DEPARTMENT OF TRANSPORTATION

ROUTE NO.	SECTION	COUNTY	POST MILES	POST MILES	SHEET NO.
FAP 774	107B-2	EFFINGHAM	344	326	8 SHEETS
FED. ROAD DIST. NO. 7		ILLINOIS		FED. AID PROJECT	

CONTRACT NO. 94827



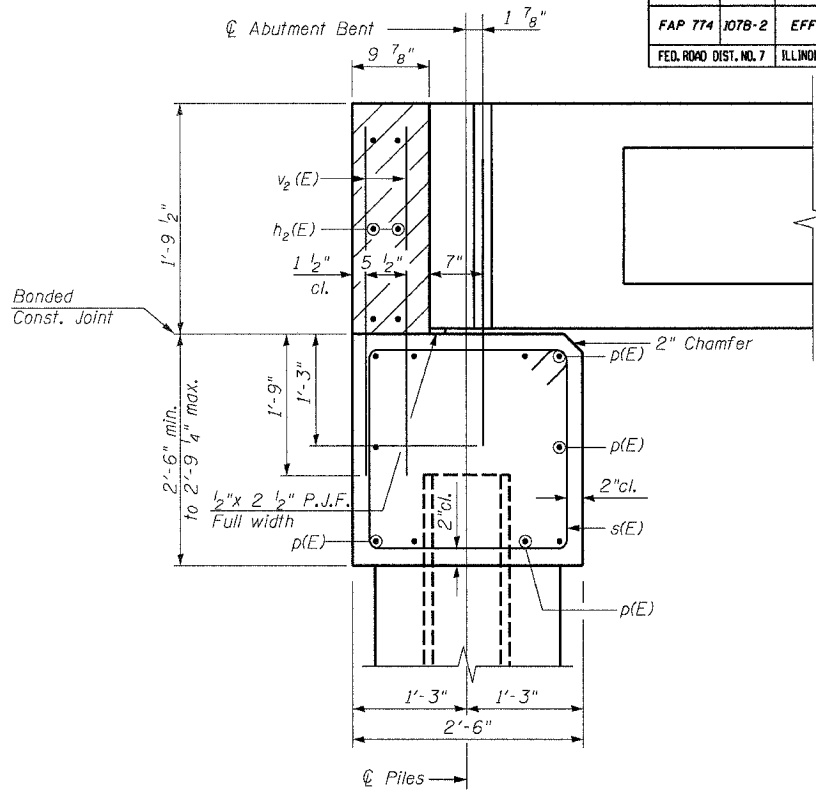
PLAN
North Abutment
South Abutment



ELEVATION
(North Abutment Looking North)
(South Abutment Looking South)
T.C.E. = Top of Cap Elevation

NOTES

1. The Backwall and the portion of the Wingwalls above the bonded construction joint shall be cast against the in-place beam.
2. Reinforcement bars shall conform to AASHTO M 31, M 42 or M 53, Grade 60.
3. Reinforcement bars designated (E) shall be epoxy coated.
4. Hatched area to be poured after beam is placed.



SECTION THRU ABUTMENT
(At Right Angles)

BILL OF MATERIAL FOR ONE ABUTMENT

Bar	No.	Size	Length	Shape
h(E)	16	#4	8'-0"	—
h1(E)	4	#4	7'-7"	—
h2(E)	6	#4	30'-8"	—
p(E)	10	#7	30'-8"	—
s(E)	30	#4	9'-5"	□
u(E)	8	#6	11'-1"	—
v(E)	8	#4	2'-7"	—
v1(E)	8	#4	3'-0"	—
v2(E)	62	#4	3'-5"	—
v3(E)	8	#4	3'-6"	—
v4(E)	4	#4	4'-0"	—
Concrete Structures			Cu. Yd.	11.0
Reinforcement Bars, Epoxy Coated			Pound	1381
Furnishing Steel Piles HP12x53			Foot	153
Driving Steel Piles			Foot	153
*Test Pile Steel HP12x53			Each	1
Concrete Encasement			Cu. Yd.	1.75
Structure Excavation			Cu. Yd.	35.5
Porous Granular Embankment			Cu. Yd.	26.5

*At North Abutment only

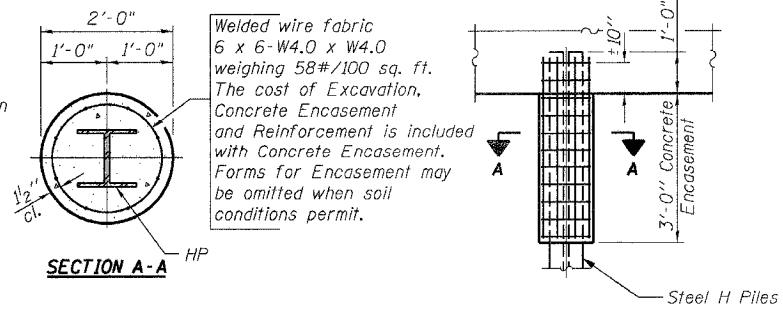
PILE DATA (2-ABUTMENTS)

Type HP12x53
Capacity Driven to Refusal*
Estimated Length 34 Feet
Number Required 9
Test Pile 1 In North Abutment
*Allows for 7 Tons of negative skin friction

DESIGN STRESSES

f_c = 3,500 psi
f_y = 60,000 psi

DESIGNED	TMM
CHECKED	KCM
DRAWN	CAR
CHECKED	TMM



PILE ENCASEMENT DETAIL AT ABUTMENT

BAR s(E)

BAR u(E)

BAR h1(E)