

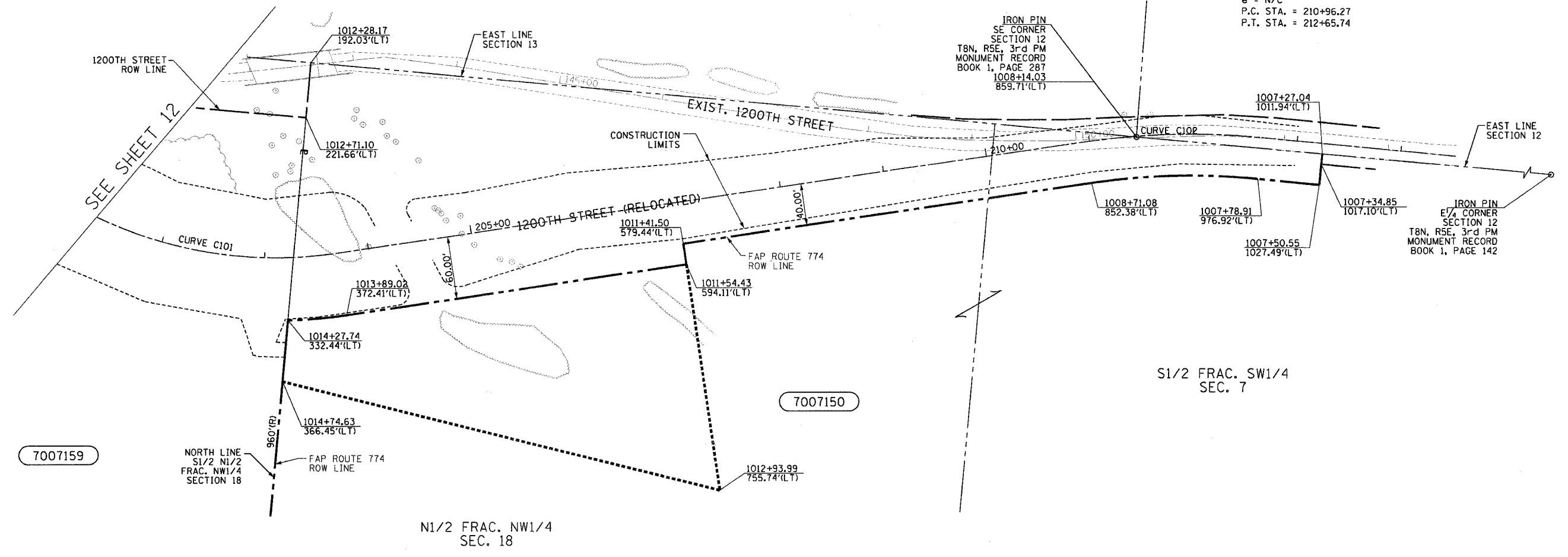
T 8 N-R 6 E 3rd P.M. DOUGLAS TWP

F.A.P. RTE.	SECTION	COUNTY	TOTAL SHEETS	SHEET NO.
774		EFFINGHAM	344	344
FED. ROAD DIST. NO. 7 ILLINOIS FED. AID PROJECT				
* 107WRS-1, 107BY, 107BY-1, 107B-2				
CONTRACT NO. 94827				

SHEET NO. 15
15 SHEETS

PROP. CURVE C101
RELOCATED 1200TH STREET
PI STA. = 202+54.90 =
STA. 1014+39.51, 246.44'(LT)
FAP ROUTE 774
Δ = 34° 00' 01" (LT)
D = 14° 19' 26"
R = 400.00'
T = 122.29'
L = 237.37'
E = 18.28'
e = N/C
P.C. STA. = 201+32.60
P.T. STA. = 203+69.97

PROP. CURVE C102
RELOCATED 1200TH STREET
PI STA. = 211+81.42 =
STA. 1007+88.51, 888.39'(LT)
FAP ROUTE 774
Δ = 13° 52' 16" (RT)
D = 8° 11' 06"
R = 700.00'
T = 85.15'
L = 169.47'
E = 5.16'
e = N/C
P.C. STA. = 210+96.27
P.T. STA. = 212+65.74



- 1
- 2
- 3
- 4
- 5
- 6
- 7
- 8
- 9
- 10
- 11
- 12
- 13
- 14
- 15
- 16
- 17
- 18
- 19
- 20
- 21
- 22
- 23
- 24
- 25
- 26
- 27
- 28
- 29
- 30
- 31
- 32
- 33
- 34
- 35
- 36
- 37
- 38
- 39
- 40
- 41
- 42
- 43
- 44
- 45
- 46
- 47
- 48
- 49
- 50
- 51
- 52
- 53
- 54
- 55
- 56
- 57
- 58
- 59
- 60
- 61
- 62
- 63

7007159

7007150

S1/2 FRAC. SW1/4
SEC. 7

N1/2 FRAC. NW1/4
SEC. 18

LIST OF IRON PINS, PIPES OR MONUMENTS TO BE PROTECTED

STATION	OFFSET	LABEL
1008+14.03	859.71'(LT)	IRON PIN

FIELD BOOK NO 449, 450, 451,
452 & 452B
(R) RECORDED DISTANCE
○ - IRON PIN

NOTE: ALL AREAS ARE IN SQUARE FEET
UNLESS OTHERWISE NOTED.

NOTE:
BEARINGS ARE REFERENCED TO THE
ILLINOIS STATE PLANE COORDINATE
SYSTEM EAST ZONE DATUM OF 1983

RIGHT OF WAY PLANS
FAP ROUTE 774

PROJECT	SECTION	107WRS-1 107BY, 107BY-1 107B-2
STATION	1007+27.04	
STATION	1015+27.37	
COUNTY	EFFINGHAM	
SCALE	1"=50'	SHEET 15 OF 15

UTILITIES:
TELEPHONE- ILLINOIS CONSOLIDATED TELEPHONE COMPANY
VERIZON NORTH INC.
GAS- AMEREN CIPS
ELECTRICITY- NORRIS ELECTRIC COOPERATIVE
AMEREN CIPS
WATER- E J WATER COORORATION
LAKE SARA AREA WATER COOPERATIVE, INC.
CITY OF EFFINGHAM
SEWER- CITY OF EFFINGHAM
T.V. CABLE- AT & T MEDIA SERVICE

PARCEL	OWNER	ADD	EXIST.	EASEMENT	REM. AREA	INST	MICRO FILM NO	DATE	BOOK	PAGE	AREA	SOLD
		AREA TAKEN					RECORDED				EXCESS	
7007159	STEPHEN KOESTER, AS SUCCESSOR TRUSTEE	380,222			0							
7007150	IOLENE KOESTER	101,062	19,495	54,344	2,309,438							

DRAWN BY: NUJ
WRITTEN BY: ILS
CHECKED BY: BKB
INSPECTED BY: RMD

JOB NO. R-97-007-00