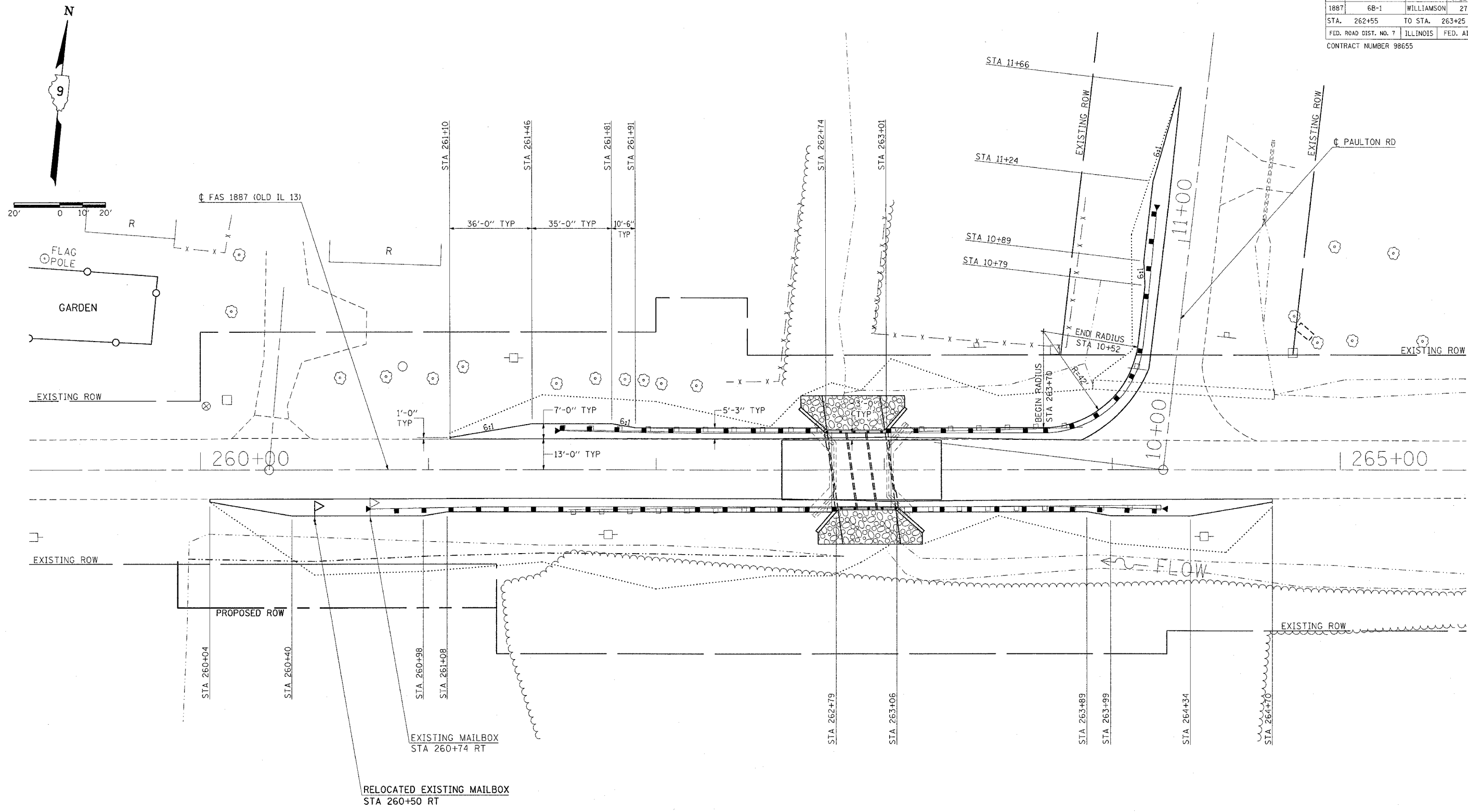


F.A.S. RTE.	SECTION	COUNTY	TOTAL SHEETS	SHEET NO.
1887	6B-1	WILLIAMSON	27	10
STA. 262+55		TO STA. 263+25		
FED. ROAD DIST. NO. 7		ILLINOIS	FED. AID PROJECT	
CONTRACT NUMBER 98655				



**NOTE**

RELOCATED EXISTING MAILBOX SHALL BE MOUNTED SUCH THAT THE FACE OF THE MAILBOX IS 6" TO 12" AND THE POST A MINIMUM OF 24" FROM THE EDGE OF THE BITUMINOUS SHOULDER.

Wednesday, November 10, 2004 9:55:46 AM  
 c:\p\projects\98655\98655.dwg  
 L:\p\98655\98655.dwg  
 L:\p\98655\98655.dwg