

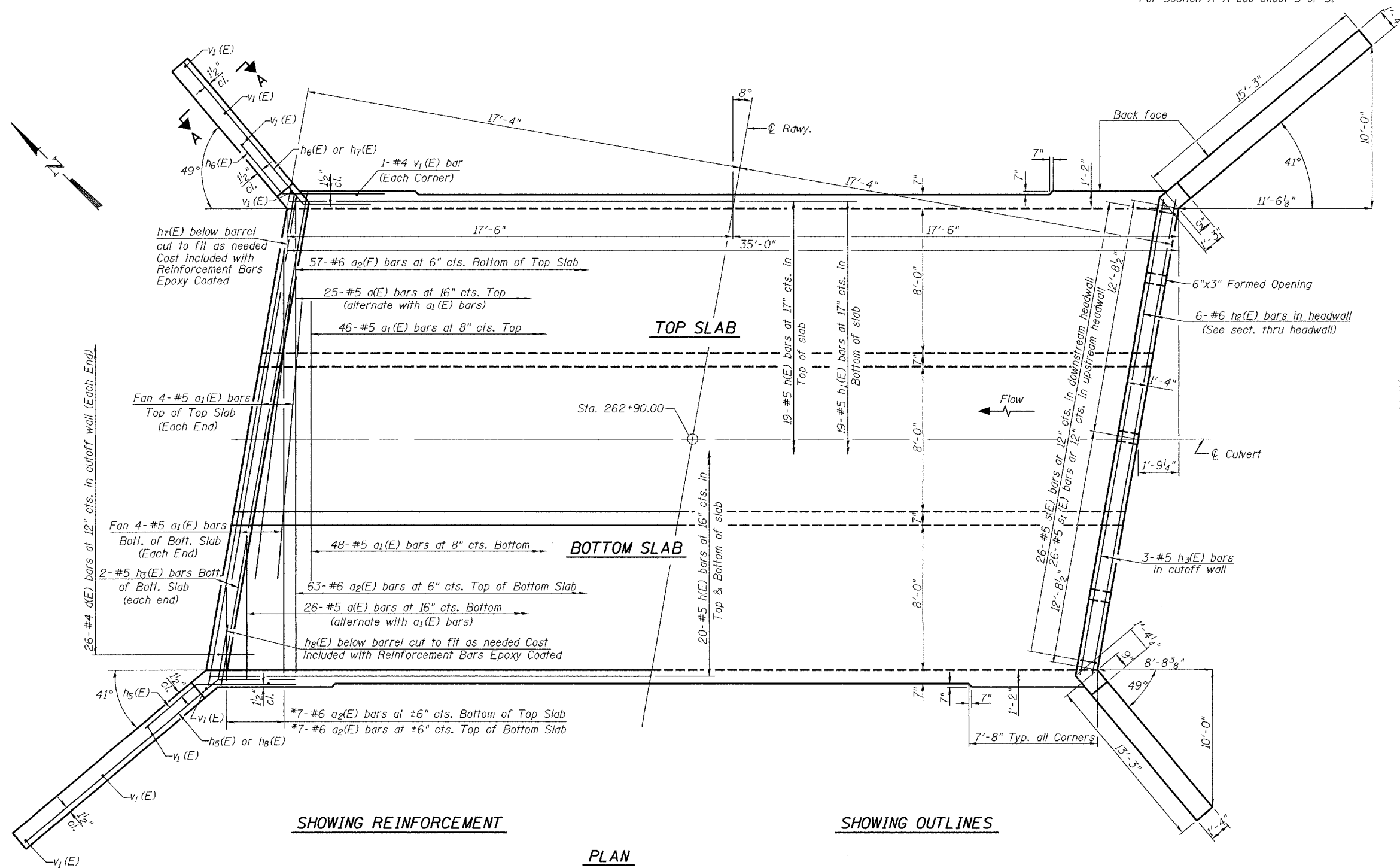
STATE OF ILLINOIS
DEPARTMENT OF TRANSPORTATION

ROUTE NO.	SECTION	COUNTY	TOTAL SHEETS	SHEET NO.
F.A.S. 1887	6B-1	Williamson	27	25
FED. ROAD DIST. NO. 7	ILLINOIS	FED. AID PROJECT-		

SHEET NO. 3
5 SHEETS

Contract No. 98655

Notes: A distance of 7'-8" of the barrel shall be poured monolithically with the wingwalls.
For Section A-A see sheet 3 of 5.

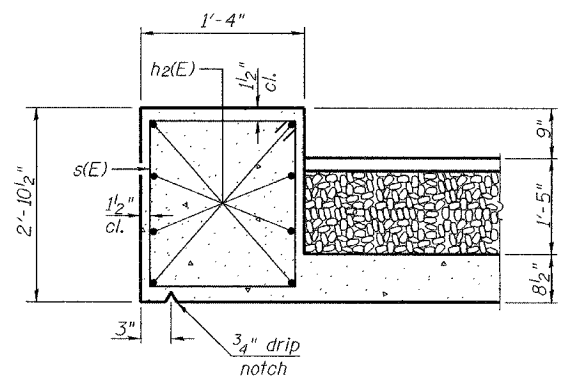


SHOWING REINFORCEMENT

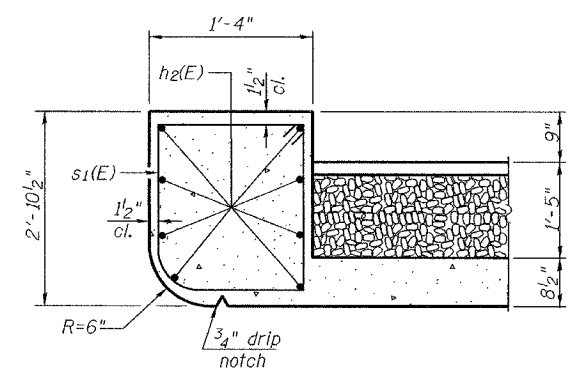
SHOWING OUTLINES

PLAN

*Cut a2(E) bars to fit skew. Use balance of bars in opposite end.



SECTION THRU HEADWALL
(Downstream End)



SECTION THRU HEADWALL
(Upstream End)

CULVERT DETAILS
F.A.S. RT. 1887 SEC. 6B-1
WILLIAMSON COUNTY
STATION 262+90.00
S.N. 100-2021

DESIGNED	Philip E. Coppernoll
CHECKED	Ray Ahanchi
DRAWN	R. Sommer
CHECKED	P.E.C./G.R.A.

EXAMINED	November 29 2004 Thomas J. Domagalaki
PASSED	Ralph E. Anderson

MIN. BAR LAP
#5 bars = 1'-8"