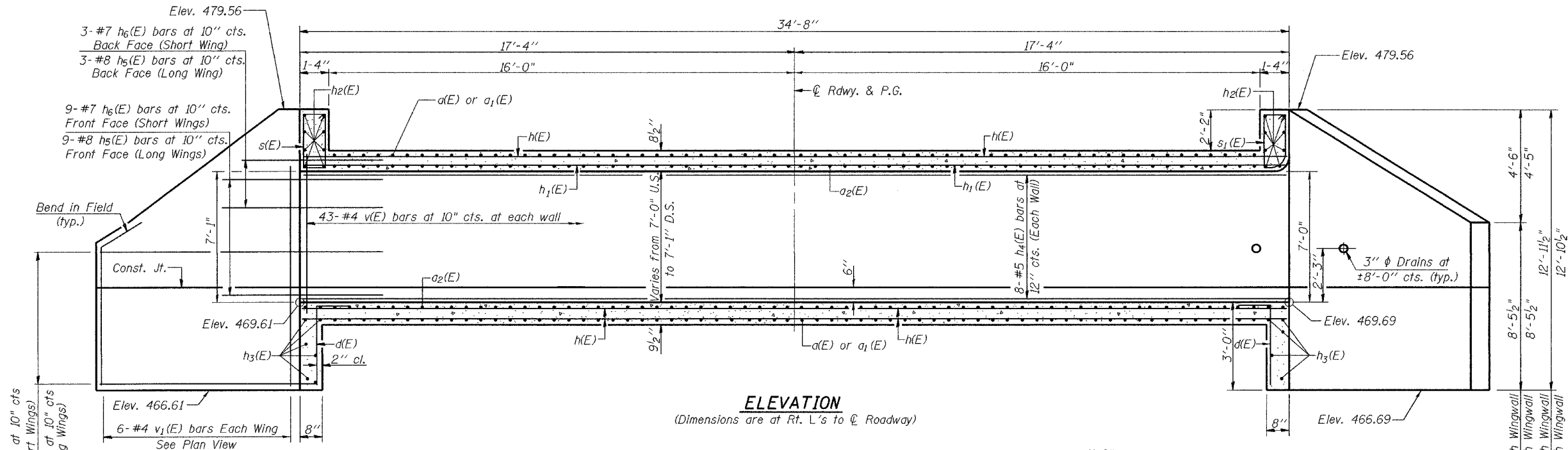


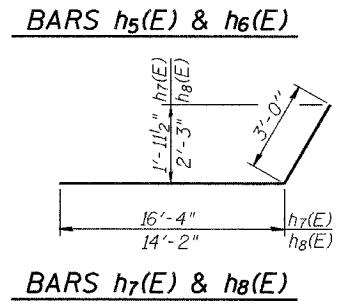
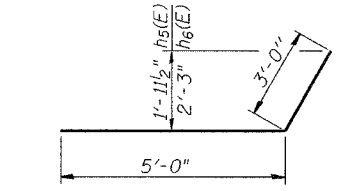
STATE OF ILLINOIS  
DEPARTMENT OF TRANSPORTATION

ROUTE NO.	SECTION	COUNTY	STATION	SHEET	SHEET NO. 4 5 SHEETS
F.A.S. 1887	6B-1	Williamson	27	26	
FED. ROAD DIST. NO. 7	ILLINOIS	FED. AID PROJECT-			

Contract No. 98655



**ELEVATION**  
(Dimensions are at Rt. L's to  $\varnothing$  Roadway)

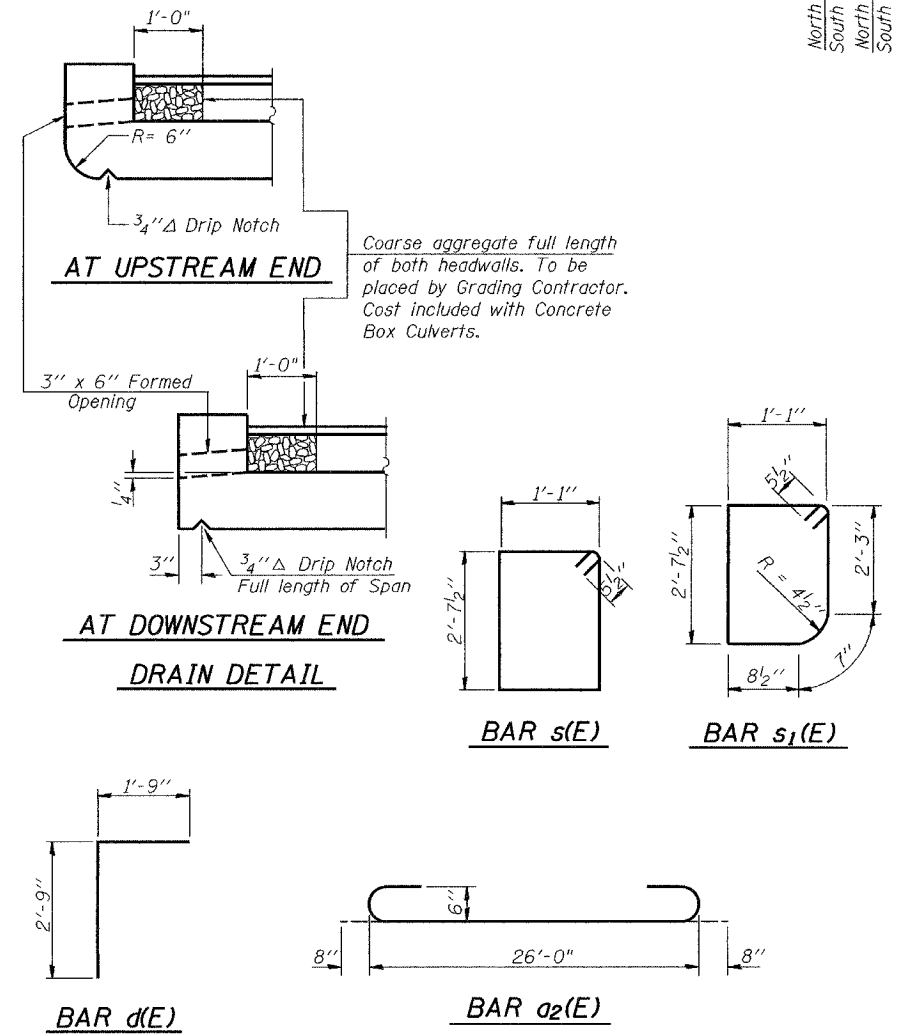


**BILL OF MATERIAL**

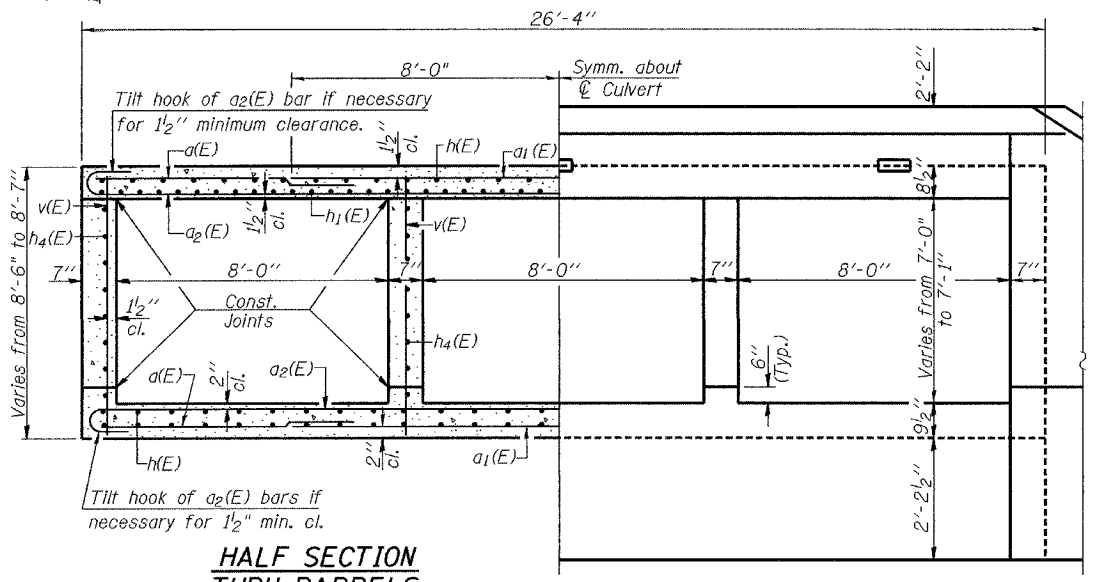
Bar No.	Size	Length	Shape
a(E)	102 #5	6'-10"	—
a1(E)	110 #5	16'-0"	—
a2(E)	134 #6	27'-4"	—
d(E)	52 #4	4'-6"	Γ
h(E)	59 #5	34'-9"	—
h1(E)	19 #5	34'-6"	—
h2(E)	16 #6	26'-4"	—
h3(E)	10 #5	26'-4"	—
h4(E)	32 #5	34'-8"	—
h5(E)	24 #8	8'-0"	—
h6(E)	24 #7	8'-0"	—
h7(E)	20 #7	17'-2"	—
h8(E)	20 #8	17'-2"	—
s(E)	26 #5	8'-4"	□
s1(E)	26 #5	8'-2"	□
v(E)	172 #4	8'-2"	—
v1(E)	24 #4	12'-7"	—
Reinforcement Bars, Epoxy Coated	Pound	17,220	
Concrete Box Culverts	Cu. yd.	117.2	

10-#7 h7(E) bars at 10" cts. Back Face (Short Wings)  
10-#8 h8(E) bars at 10" cts. Back Face (Long Wings)

**MIN. BAR LAP**  
#5 bars = 1'-8"



**CULVERT DETAILS**  
F.A.S. RT. 1887 SEC. 6B-1  
WILLIAMSON COUNTY  
STATION 262+90.00  
S.N. 100-2021



**HALF SECTION THRU BARRELS**  
(Dim. at Rt. L's)

**HALF END ELEVATION**  
(Dim. at Rt. L's)

**SECTION A-A**  
(Thru short wing)

DESIGNED Philip E. Coppernoll  
CHECKED Ray Ahanchi  
DRAWN R. Sommer  
CHECKED P.E.C./G.R.A.

November 29 2004  
EXAMINED Thomas J. Domagalak  
PASSED Ralph E. Anderson  
ENGINEER OF BRIDGES AND STRUCTURES