

DATE	
BY	
REVISION	
NO.	
DESCRIPTION	

DATE	
BY	
REVISION	
NO.	
DESCRIPTION	

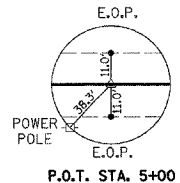
D & L RICKENBERG

NW/4, SEC 12, T. 7 S., R. 5 W., 3RD P.M.

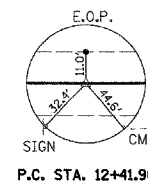
NICK DRESEL TRUST

W/2, NE/4, SEC 12, T. 7 S., R. 5 W., 3RD P.M.

FAS	SECTION	COUNTY	TOTAL SHEETS
1870	03-00136-00-BR	JACKSON	20
STA.	TO STA.		
FED. ROAD DIST. NO.	ILLINOIS	FED. AID PROJECT	
CONTRACT NO. 99203			



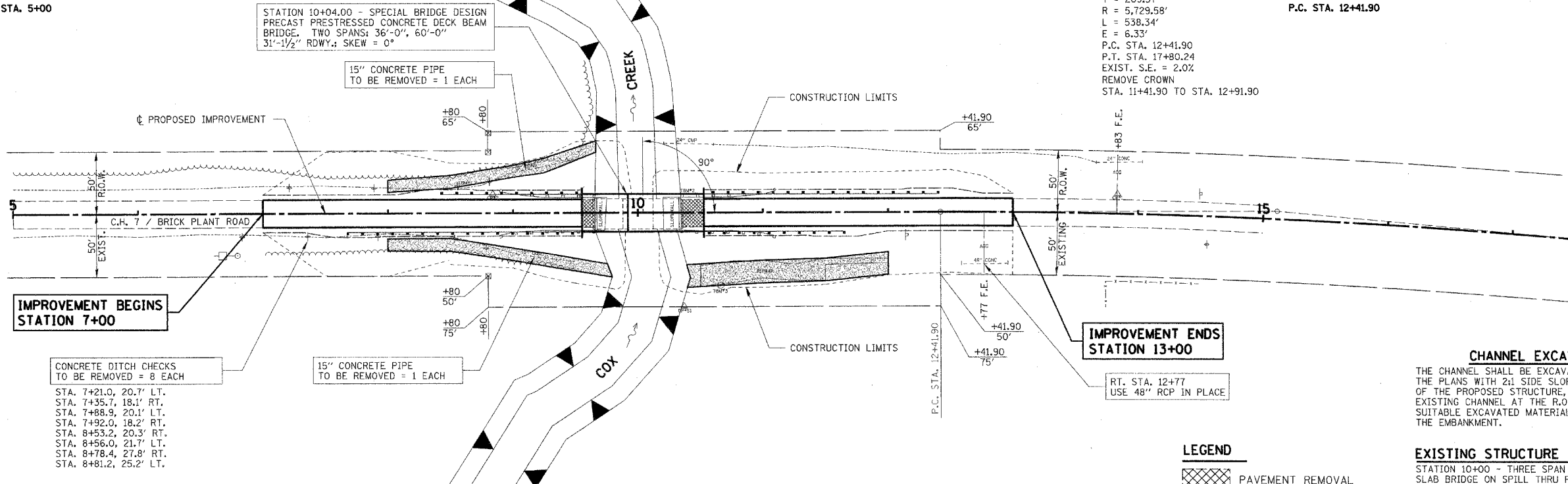
P.O.T. STA. 5+00



P.C. STA. 12+41.90

CURVE DATA

PI Sta. 15+11.27
 $\Delta = 5^\circ 23' 00''$ (RT)
 $D = 1^\circ 00' 00''$
 $T = 269.37'$
 $R = 5,729.58'$
 $L = 538.34'$
 $E = 6.33'$
P.C. STA. 12+41.90
P.T. STA. 17+80.24
EXIST. S.E. = 2.0%
REMOVE CROWN
STA. 11+41.90 TO STA. 12+91.90



CONCRETE DITCH CHECKS TO BE REMOVED = 8 EACH

STA. 7+21.0, 20.7' LT.
 STA. 7+35.7, 18.1' RT.
 STA. 7+88.9, 20.1' LT.
 STA. 7+92.0, 18.2' RT.
 STA. 8+53.2, 20.3' RT.
 STA. 8+56.0, 21.7' LT.
 STA. 8+78.4, 27.8' RT.
 STA. 8+81.2, 25.2' LT.

STATION 10+04.00 - SPECIAL BRIDGE DESIGN
 PRECAST PRESTRESSED CONCRETE DECK BEAM
 BRIDGE, TWO SPANS: 36'-0", 60'-0"
 31'-1/2" RDWY.; SKEW = 0°

15" CONCRETE PIPE
 TO BE REMOVED = 1 EACH

15" CONCRETE PIPE
 TO BE REMOVED = 1 EACH

**IMPROVEMENT ENDS
 STATION 13+00**

RT. STA. 12+77
 USE 48" RCP IN PLACE

CHANNEL EXCAVATION

THE CHANNEL SHALL BE EXCAVATED AS SHOWN IN THE PLANS WITH 2:1 SIDE SLOPES WITHIN THE LIMITS OF THE PROPOSED STRUCTURE, THEN TAPER TO THE EXISTING CHANNEL AT THE R.O.W. LINES. ONLY SUITABLE EXCAVATED MATERIAL SHALL BE USED IN THE EMBANKMENT.

EXISTING STRUCTURE NO. 039-3035

STATION 10+00 - THREE SPAN PRECAST CONCRETE SLAB BRIDGE ON SPILL THRU PILE BENT ABUTMENT WITH CONCRETE SLOPE WALLS AND WINGS AND CONCRETE PILE BENT PIERS.
 71.92' BK.-BK. ABUTS.; 26.12' O.-O. DECK
 REMOVAL OF EXISTING STRUCTURES = 1 EACH

LEGEND

PAVEMENT REMOVAL

ARCH LAND CO.

E/2, SW/4, SEC 12, T. 7 S., R. 5 W., 3RD P.M.

RAY SICKMEYER

SE/4, SEC 12, T. 7 S., R. 5 W., 3RD P.M.

