

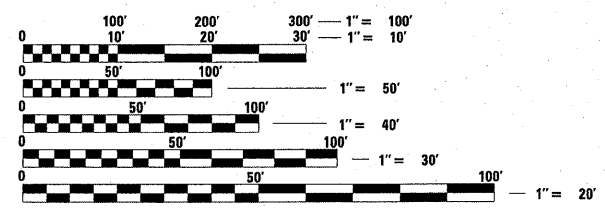
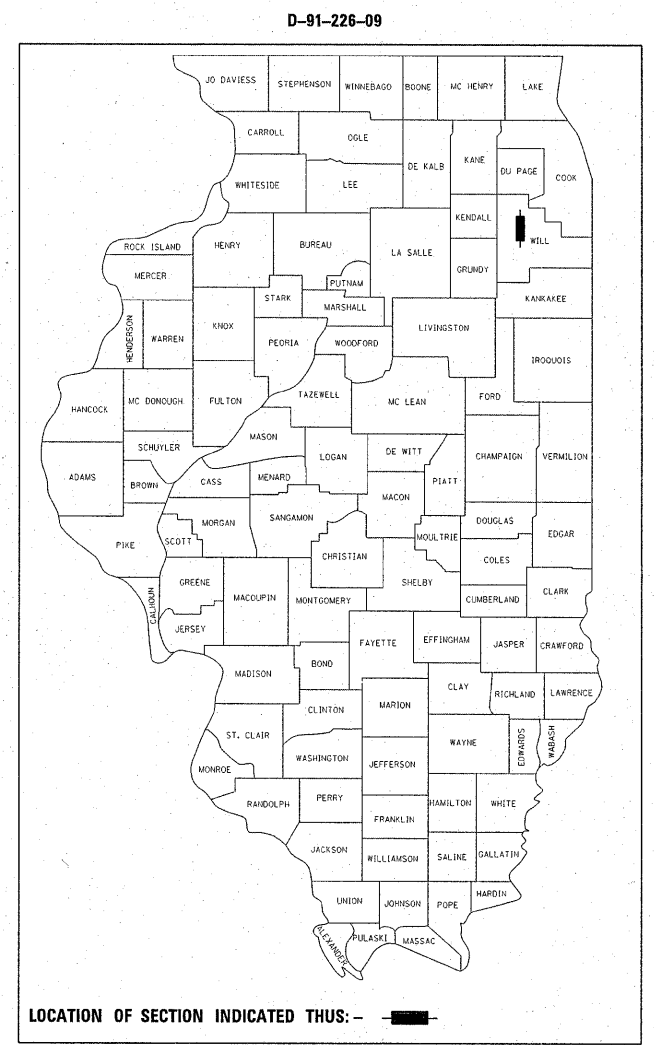
STATE OF ILLINOIS
DEPARTMENT OF TRANSPORTATION
DIVISION OF HIGHWAYS
**PROPOSED
HIGHWAY PLANS**

F.A.P. 846 / 357 (IL 53)
SECTION 2010-133-1
FORKED CREEK TO US 52
GUARDRAIL, SHOULDER RUMBLE STRIPS &
TRAFFIC SIGNAL MODERNIZATION
PROJECT: HSIP-0005(679)
WILL COUNTY
C-91-226-09

F.A.P. RTE.	SECTION	COUNTY	TOTAL SHEETS	SHEET NO.
•	2010-133-1	WILL	55	1
FED. ROAD DIST. NO.	ILLINOIS	CONTRACT NO.	60F75	
• 846/357				

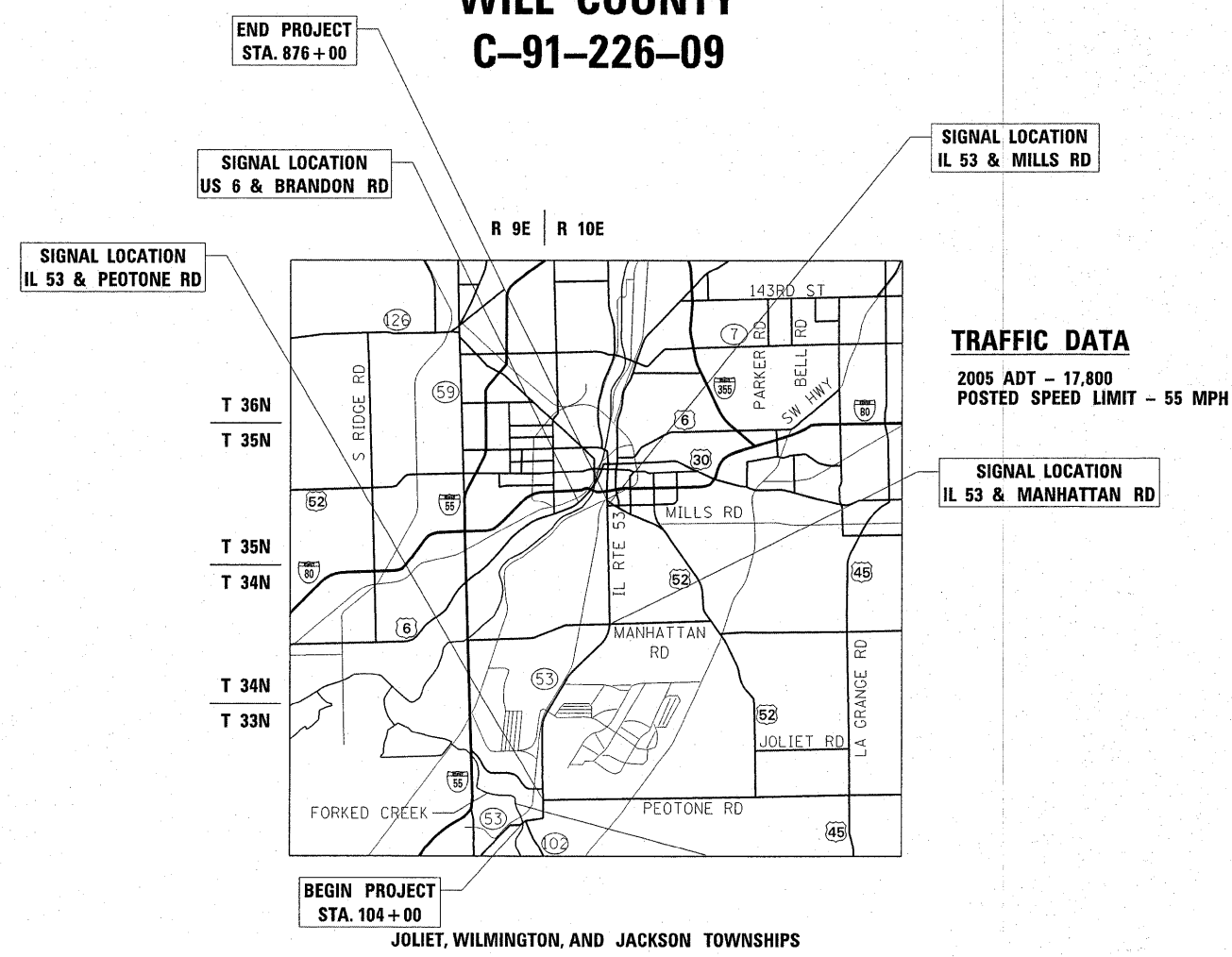
FOR INDEX OF SHEETS, SEE SHEET NO. 2

THE IMPROVEMENT IS LOCATED WITHIN THE CITIES OF JOLIET AND WILMINGTON, AND THE VILLAGES OF ELWOOD, ROCKDALE, AND PRESTON HEIGHTS



FULL SIZE PLANS HAVE BEEN PREPARED USING STANDARD ENGINEERING SCALES. REDUCED SIZED PLANS WILL NOT CONFORM TO STANDARD SCALES. IN MAKING MEASUREMENTS ON REDUCED PLANS, THE ABOVE SCALES MAY BE USED.

J.U.L.I.E.
JOINT UTILITY LOCATION INFORMATION FOR EXCAVATION
1-800-892-0123
OR 811



PROJECT ENGINEER: JENPAI CHANG (847) 705-4432
PROJECT MANAGER: KEN ENG

CONTRACT NO. 60F75

GROSS AND NET LENGTH OF PROJECT = 77,200 FT = 14.62 MI.

STATE OF ILLINOIS
DEPARTMENT OF TRANSPORTATION
DIVISION OF HIGHWAYS

SUBMITTED OCTOBER 26, 2010

Diane M. O'Keefe
DEPUTY DIRECTOR OF HIGHWAYS, REGION ENGINEER

December 10, 2010
Scott E. Stitt P.E.
acting ENGINEER OF DESIGN AND ENVIRONMENT

December 10, 2010
Christine M. Reed
DIRECTOR OF HIGHWAYS, CHIEF ENGINEER

**PRINTED BY THE AUTHORITY
OF THE STATE OF ILLINOIS**