

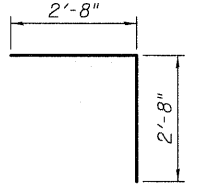
**SCOUR PROTECTION MAT
BILL OF MATERIAL**

Bar	No.	Size	Length	Shape
a(E)	234	#4	17'-7"	—
a ₁ (E)	17	#4	20'-6"	—
a ₂ (E)	15	#4	18'-5"	—
b(E)	72	#4	27'-7"	—
b ₁ (E)	108	#4	22'-3"	—
b ₂ (E)	14	#4	16'-2"	—
b ₃ (E)	12	#4	14'-1"	—
d(E)	134	#4	5'-4"	└
h ₁ (E)	12	#4	16'-10"	—
h ₂ (E)	12	#4	17'-10"	—
Reinforcement Bars, Epoxy Coated			Pound	7,120
Concrete Structures			Cu Yd	98

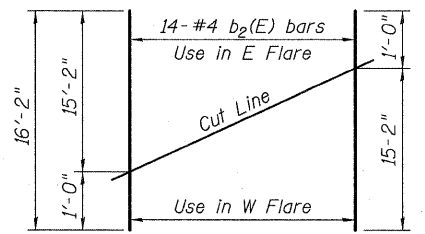
* See field cutting diagram.
** Splay bars at flared end as required.

MINIMUM BAR LAPS
#4 Bar = 1'-7"

NOTES:
Reinforcement bars designated (E) shall be epoxy coated.
Bars indicated thus: 36 x 3-#4 etc., indicates 36 lines of bar with 3 lengths per bar.

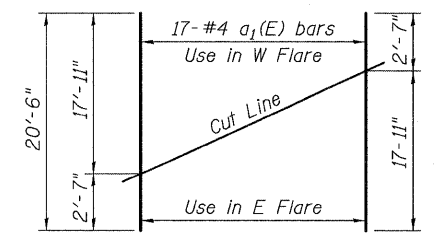


BAR d(E)



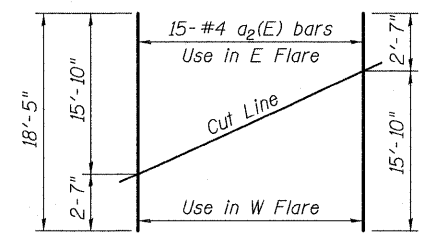
b₂ (E) FIELD CUTTING DIAGRAM

Order b₂(E) bars full length. Cut as shown and use remainder of bars in opposite flared end.



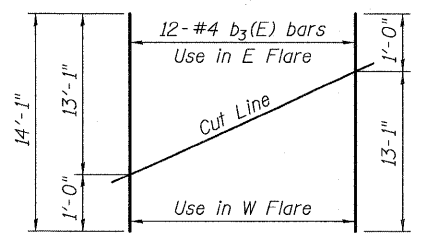
a₁ (E) FIELD CUTTING DIAGRAM

Order a₁(E) bars full length. Cut as shown and use remainder of bars in opposite flared end.



a₂ (E) FIELD CUTTING DIAGRAM

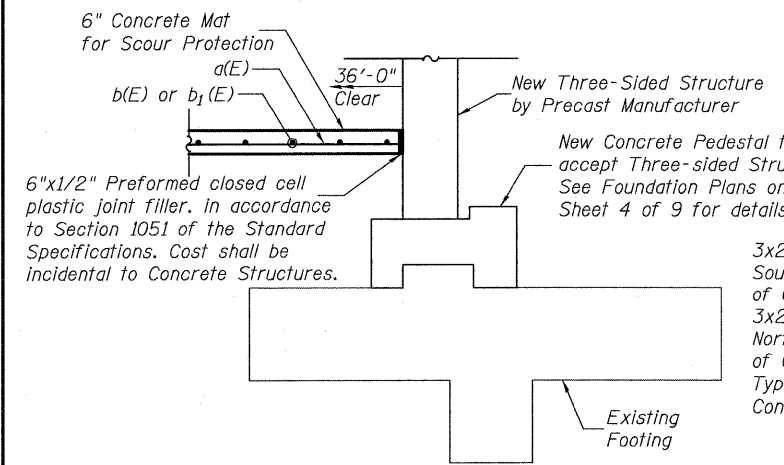
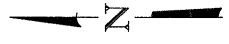
Order a₂(E) bars full length. Cut as shown and use remainder of bars in opposite flared end.



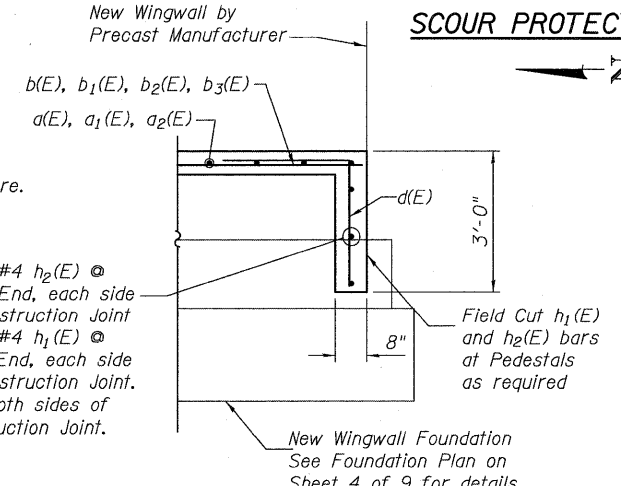
b₃ (E) FIELD CUTTING DIAGRAM

Order b₃(E) bars full length. Cut as shown and use remainder of bars in opposite flared end.

SCOUR PROTECTION MAT PLAN



SECTION A-A



SECTION B-B

