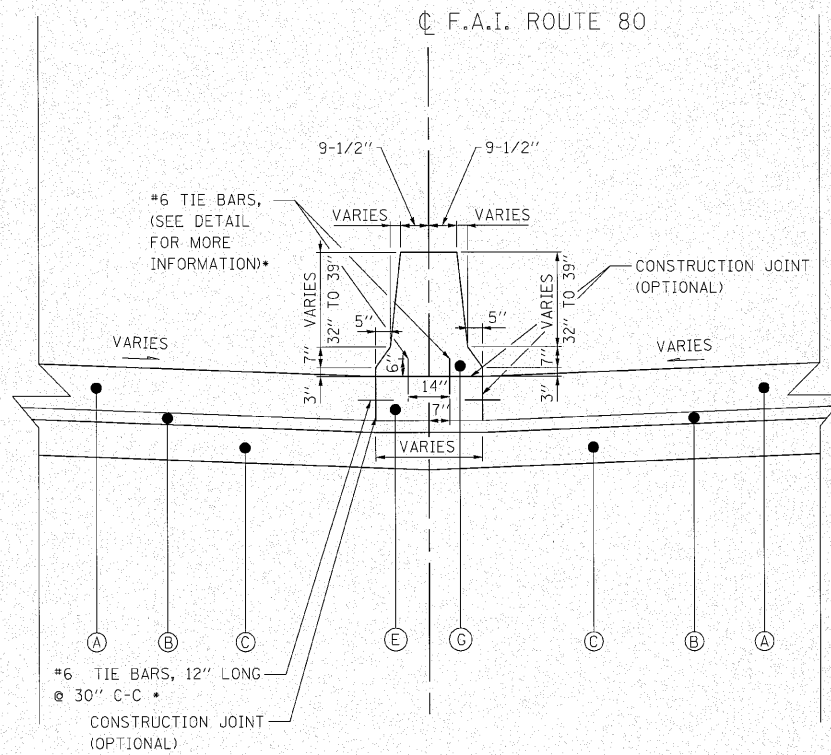


MEDIAN DETAIL

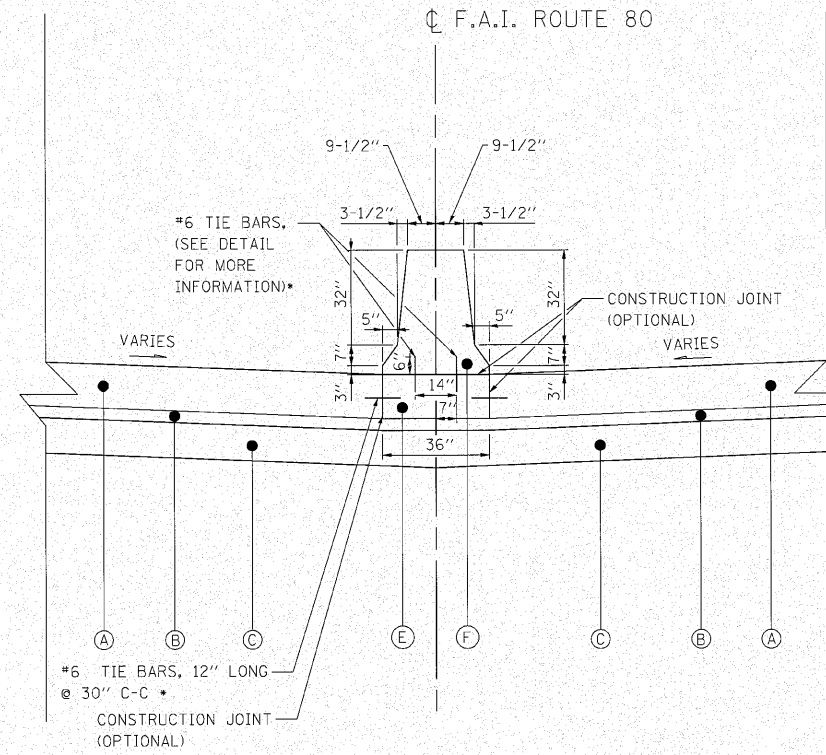
F.A.I. ROUTE 80  
CONCRETE BARRIER, VARIABLE CROSS SECTION, 42" HEIGHT

COST OF ADDITIONAL THICKNESS OF AGGREGATE SUBGRADE (WHERE NEEDED) SHALL BE INCLUDED IN THE CONTRACT PRICE FOR AGGREGATE SUBGRADE, 12"



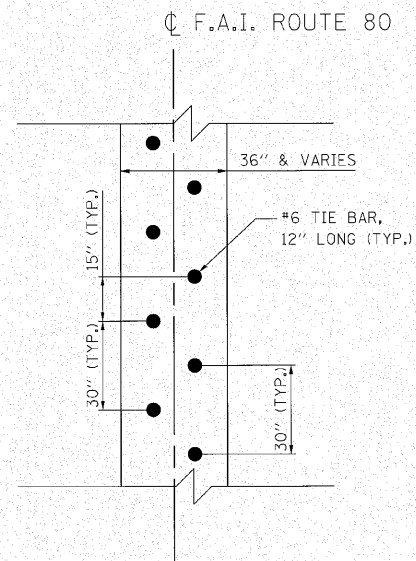
MEDIAN DETAIL

F.A.I. ROUTE 80  
CONCRETE BARRIER, DOUBLE FACE, SPECIAL



MEDIAN DETAIL

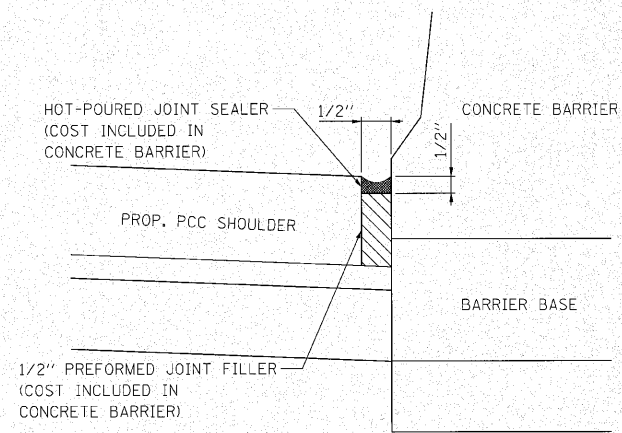
F.A.I. ROUTE 80  
CONCRETE BARRIER, DOUBLE FACE, 42" HEIGHT



TIE BAR SPACING DETAIL

F.A.I. ROUTE 80  
BARRIER BASE PLAN VIEW

\* TIE BARS ARE ONLY REQUIRED WITH OPTIONAL CONSTRUCTION JOINT. ALL TIE BARS SHALL BE EPOXY COATED AND WILL NOT BE PAID FOR SEPARATELY, BUT SHALL BE INCLUDED IN THE COST OF THE CONCRETE BARRIER BASE.



DETAIL A

PROPOSED LEGEND

- (A) PORTLAND CEMENT CONCRETE SHOULDER, 12 1/4" (48300705)
- (B) STABILIZED SUBBASE - HOT-MIX ASPHALT, 4 1/2" (31200502)
- (C) AGGREGATE SUBGRADE, 12" (20001050)
- (D) DRILL AND GROUT #6 TIE BARS (AS PER STANDARD 420001) (INCLUDED IN THE COST FOR PROPOSED PCC SHOULDER, 12 1/4")
- (E) CONCRETE BARRIER BASE (63700900)
- (F) CONCRETE BARRIER, DOUBLE FACE, 42 INCH HEIGHT (63700275)
- (G) CONCRETE BARRIER, DOUBLE FACE (SPECIAL) (X0326445)
- (H) CONCRETE BARRIER, VARIABLE CROSS SECTION, 42" HEIGHT (X6370250)
- (I) SHOULDER RUMBLE STRIP (AS PER STANDARD 642001) (64200105)
- (J) TOPSOIL FURNISH AND PLACE, 4" (21101615)
- (K) PIPE UNDERDRAIN, 6" (60107700)
- (L) CONDUIT IN TRENCH, 4" DIA., PVC (81013000)
- (M) EARTH EXCAVATION (20200100)
- (N) AGGREGATE SHOULDERS, TYPE B (48101200)
- (O) GRADING AND SHAPING SHOULDERS (X2020110)

STA.	TO	STA.	CONCRETE BARRIER, VARIABLE CROSS SECTION, 42" HEIGHT X6370250	CONCRETE BARRIER, DOUBLE FACE, SPECIAL X0326445	CONCRETE BARRIER, DOUBLE FACE, 42" HEIGHT 63700275
715+85	TO	736+95	2110		
738+05	TO	741+91	386		
744+53	TO	765+10	2057		
766+00	TO	783+50	1750		
783+50	TO	794+74		1124	
795+96	TO	799+03		307	
802+73	TO	811+56			883
815+13	TO	820+50			537
820+50	TO	826+64		614	
830+10	TO	839+29			919
840+47	TO	851+50			1103
851+50	TO	853+00		150	
853+00	TO	869+25			1625
870+20	TO	882+50			1230
TOTAL			6303	2195	6297

NOTES:

- THE VARIABLE CROSS-SECTION SHALL BE USED WHEN THERE IS A DIFFERENCE IN ELEVATION BETWEEN THE TWO SIDES OF THE BARRIER. THE BARRIER WILL BE PAID FOR AS CONCRETE BARRIER, VARIABLE CROSS SECTION, 42" HEIGHT WHEN THE VARIATION EXCEEDS 3". THE BARRIER WILL BE PAID FOR AS CONCRETE BARRIER, DOUBLE FACE, SPECIAL OR CONCRETE BARRIER, DOUBLE FACE, 42" HEIGHT WHEN THE VARIATION IS EQUAL TO OR LESS THAN 3".
- CONSTRUCTION JOINTS SHALL BE SPACED AS DESCRIBED IN THE SPECIFICATIONS AND SHALL BE CONSTRUCTED IN THE CONCRETE BARRIER WALL AND IN THE CONCRETE BARRIER BASE. THIS WORK SHALL NOT BE PAID FOR SEPARATELY BUT SHALL BE INCLUDED IN THE COST OF THE BARRIER WALL AND BASE.
- WHEN ELECTRICAL CONDUITS ARE CONSTRUCTED, THEY SHALL BE LOCATED IN THE EARTH BELOW THE BARRIER BASE.
- FOR ADDITIONAL CONCRETE BARRIER DETAILS, SEE STANDARD 637006.
- THE CONCRETE BARRIER BASE MUST BE POURED LEVEL. THE BASE SHALL NOT FOLLOW THE ADJACENT SHOULDER SLOPE.

n:\pro\3284\2\west\Drawings\Tiebar\Tiebar\Tiebar.dwg