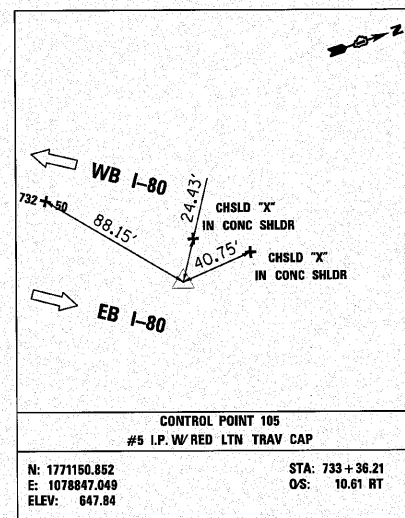
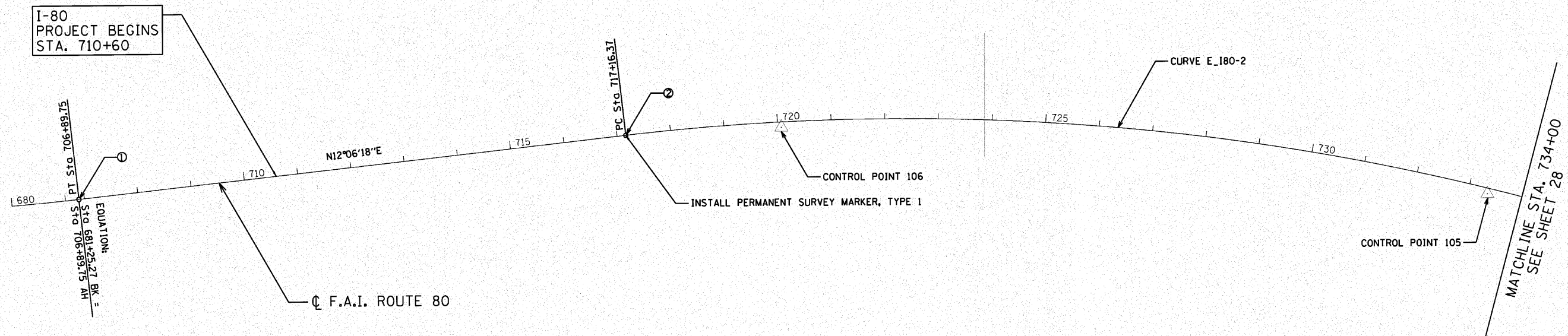


PROJECT COORDINATES

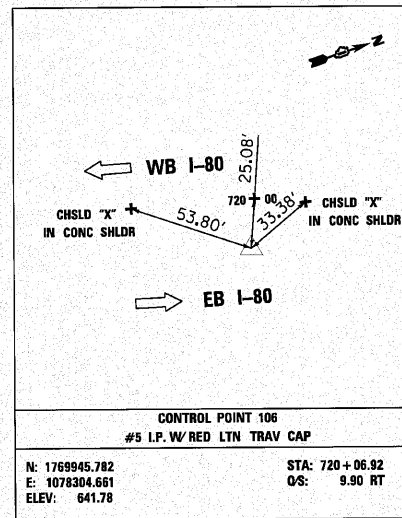
NUMBER	LOCATION	DESCRIPTION	STATION	NORTHING	EASTING
1	FAI - 80	P.T. STATION	706+89.75	1768662.742	1078009.844
2	FAI - 80	P.C. STATION	717+16.37	1769666.533	1078225.130

CURVE DATA F.A.I. ROUTE 80

CURVE E.180-2
 PI STA. = 743+64.24
 Δ = 60° 40' 37" (RT)
 D = 1° 15' 59"
 R = 4,524.31'
 T = 2,647.87'
 L = 4,791.31'
 E = 717.89'
 P.C. STA = 717+16.37
 P.T. STA = 765+07.68



CONTROL POINT 105
 #5 I.P. W/ RED LTN TRAV CAP
 N: 1771150.852 STA: 733+36.21
 E: 1078847.049 OS: 10.61 RT
 ELEV: 647.84



CONTROL POINT 106
 #5 I.P. W/ RED LTN TRAV CAP
 N: 1769945.782 STA: 720+06.92
 E: 1078304.661 OS: 9.90 RT
 ELEV: 641.78

BM#	DESCRIPTION	ELEVATION
BM2	CHISELED SQUARE SOUTHERN MOST EDGE OF CONC. SHOULDER LOCATED 100' EAST OF STAMPED STATION 725+00.	642.73

N:\PROJECTS\38842 - Mess's Design\MyeSheets\38842-01\plan1.dgn

<p>Clorba Group, Inc. CONSULTING ENGINEERS 2507 North Cumberland Avenue, Suite 402 Chicago, Illinois 60664 Tel: 773.775.4500 Fax: 773.775.4014 Email: cgroup@clorba.com</p>	USER NAME = jk.jellman PLLOT SCALE = 100.0000' / IN. PLLOT DATE = 10/28/2010	DESIGNED - CRC DRAWN - JMK CHECKED - MRJ DATE - 10/27/2010	REVISED - REVISED - REVISED - REVISED -	STATE OF ILLINOIS DEPARTMENT OF TRANSPORTATION	F.A.I. 80 FROM US 30 TO NS RAILROAD ALIGNMENTS, TIES, AND BENCHMARKS	F.A.I. RTE. 80	SECTION 99-5-Y	COUNTY WILL	TOTAL SHEETS 277	SHEET NO. 27
	SCALE: SHEET NO. OF SHEETS STA. TO STA.						CONTRACT NO. 60147 ILLINOIS FED. AID PROJECT			