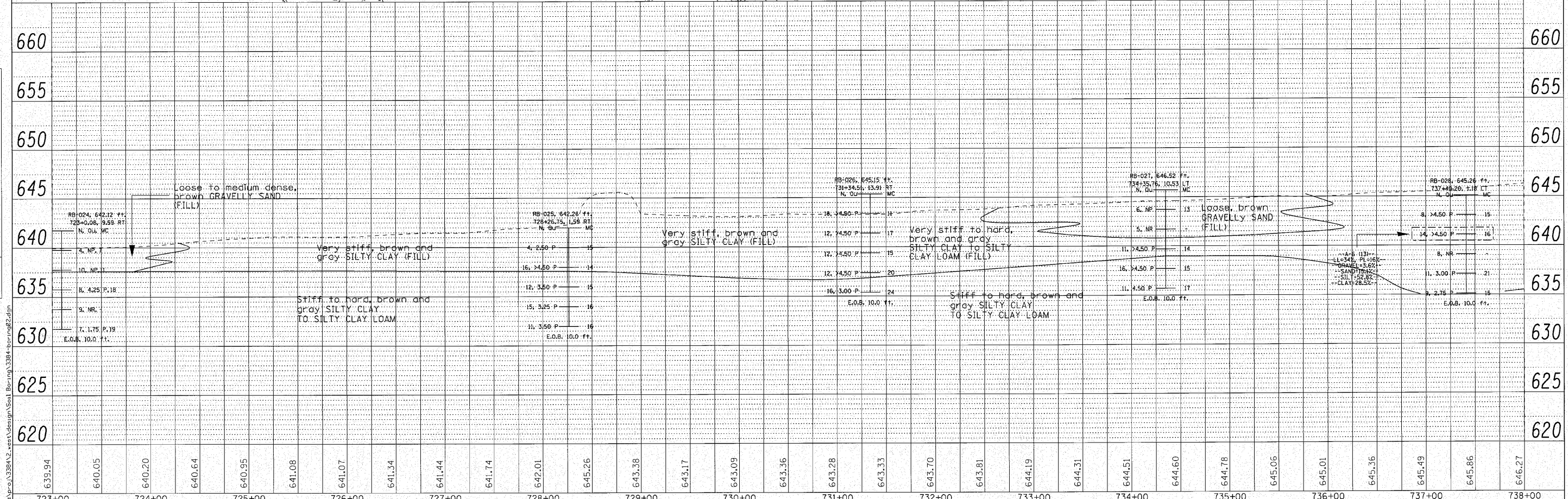
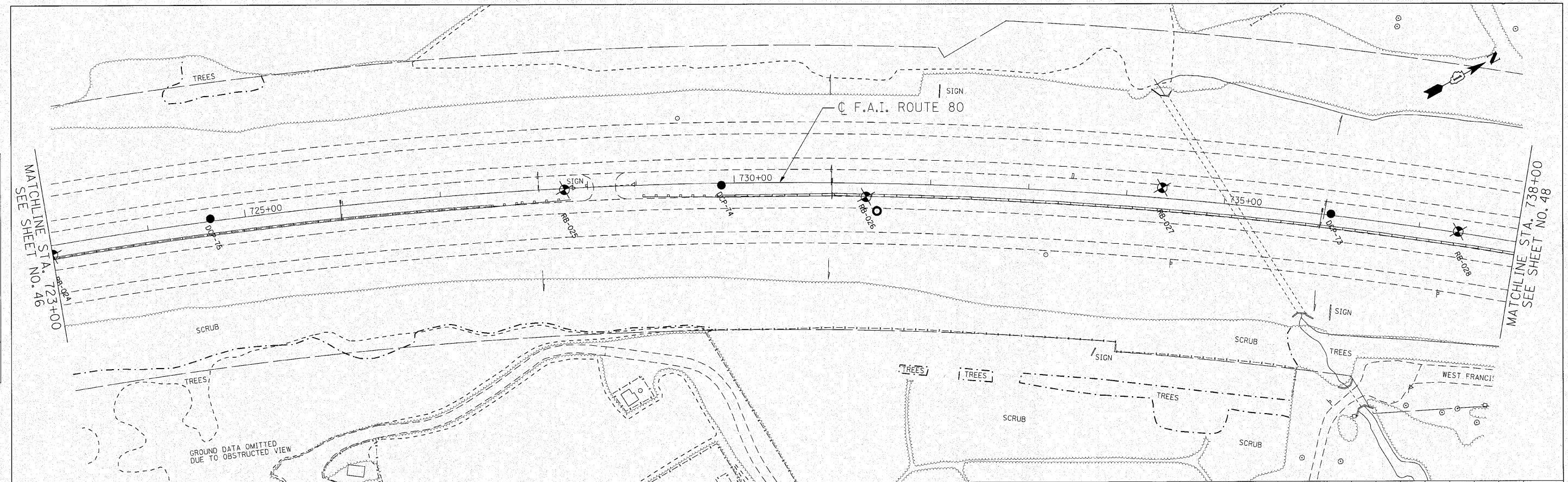


PLAN	DATE
BY	
REVISIONS	
NO.	
DATE	
BY	
DESCRIPTION	
1	
2	
3	
4	
5	
6	
7	
8	
9	
10	

PROFILE	DATE
BY	
REVISIONS	
NO.	
DATE	
BY	
DESCRIPTION	
1	
2	
3	
4	
5	
6	
7	
8	
9	
10	



723+00	724+00	725+00	726+00	727+00	728+00	729+00	730+00	731+00	732+00	733+00	734+00	735+00	736+00	737+00	738+00															
639.94	640.05	640.20	640.64	640.95	641.08	641.07	641.34	641.44	641.74	642.01	645.26	643.38	643.17	643.09	643.36	643.28	643.33	643.70	643.81	644.19	644.31	644.51	644.60	644.78	645.06	645.01	645.36	645.49	645.86	646.27

ENGINEERING CONSULTANT
Clorba Group, Inc.
 CONSULTING ENGINEERS
 6507 North Cumberland Avenue, Suite 412
 Chicago, Illinois 60634
 Tel: 773 775 4000 Fax: 773 775 4014
 Email: clorba@clorba.com

USER NAME = ccorneil
 DESIGNED - CRC
 DRAWN - JMK
 CHECKED - MRJ
 DATE - 10/27/2010
 REVISED -
 REVISED -
 REVISED -
 REVISED -

STATE OF ILLINOIS
 DEPARTMENT OF TRANSPORTATION

F.A.I. 80 FROM US 30 TO US 45
 SOIL BORING LOCATION PLANS AND SOIL PROFILES
 SCALE: 1" = 50' SHEET NO. OF SHEETS STA. 723+00 TO STA. 738+00

F.A.I. RTE.	SECTION	COUNTY	TOTAL SHEETS	SHEET NO.
80	99-5-Y	WILL	276	47
CONTRACT NO. 60147			ILLINOIS FED. AID PROJECT	