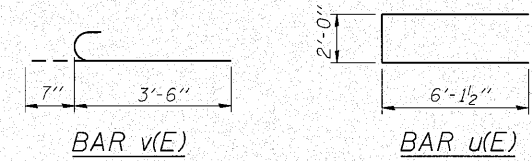
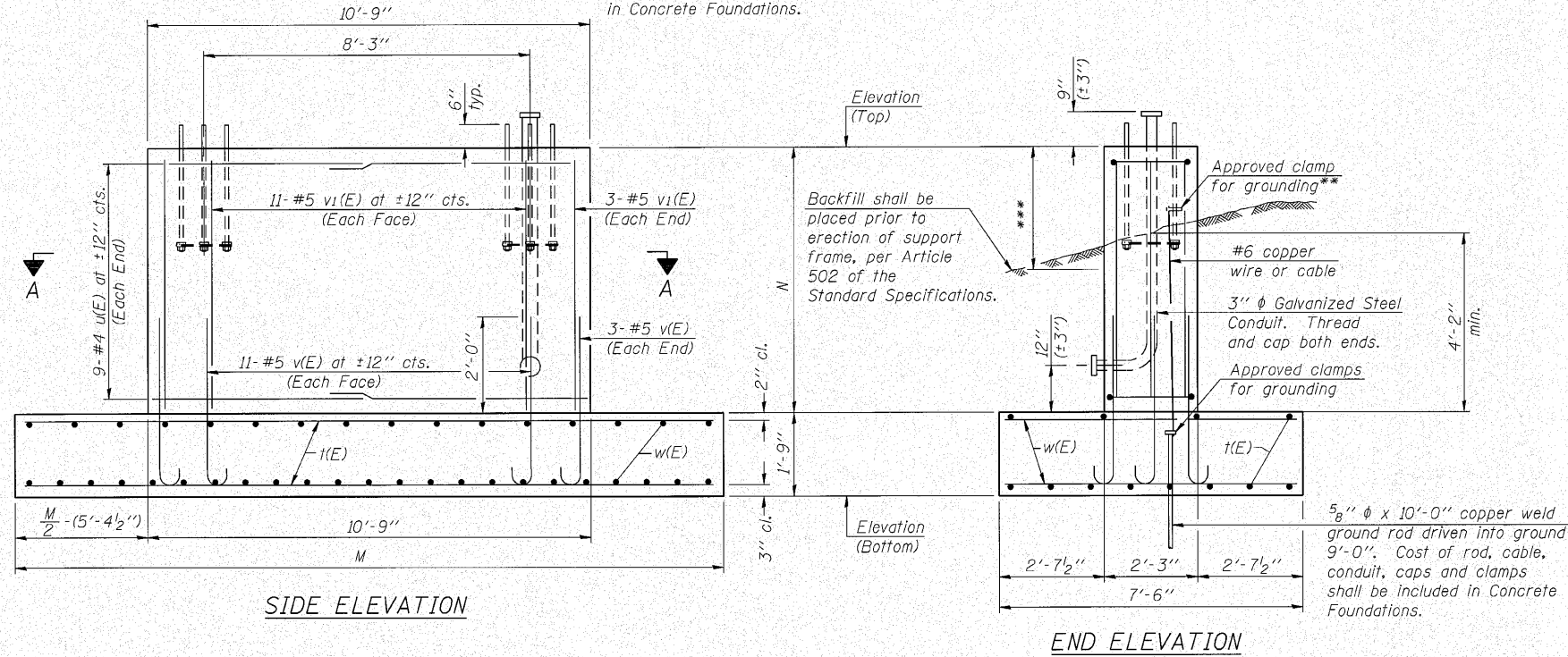


For anchor rod size and placement, see Support Frame Detail Sheet.

\*\* Anchor rod shall be ground or filed to bright metal at clamp and cable connection location.

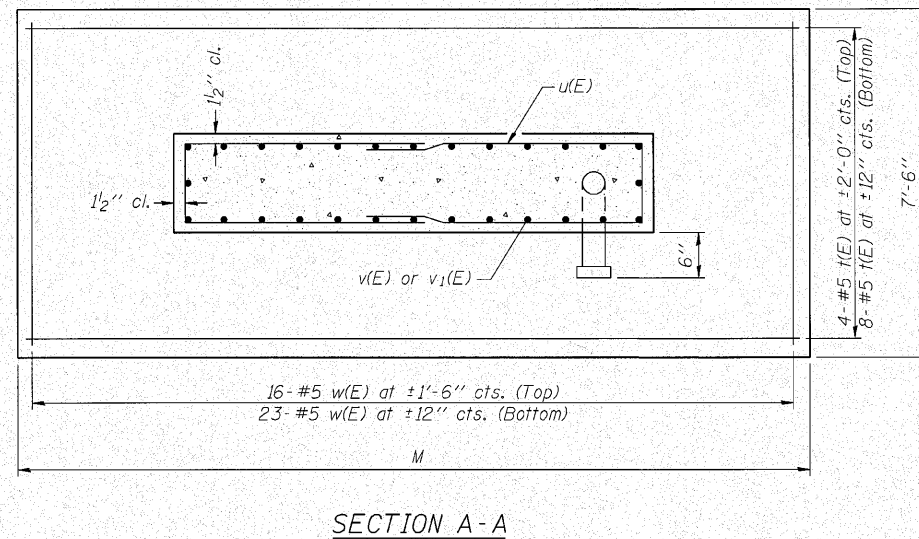
\*\*\* A normal surface finish followed by a Bridge Seat Sealer application will be required on concrete surfaces above the lowest elevation 6" below finished ground line. Cost included in Concrete Foundations.



**BAR LIST - EACH FOUNDATION**

Bar	Number	Size	Length	Shape
t(E)	12	#5	*	—
u(E)	18	#4	14'-3"	—
v(E)	28	#5	4'-1"	C
v <sub>1</sub> (E)	28	#5	*	—
w(E)	39	#5	7'-3"	—

\*Length of t(E) bar = (Dim. M) - 6"  
v<sub>1</sub>(E) bar = (Dim. N) - 3"



Structure Number	Station	Left Foundation				Right Foundation				Class SI Concrete (Cu. Yds.)
		Elevation Top	Elevation Bottom	N	M	Elevation Top	Elevation Bottom	N	M	
IS0991080R139.5	795+35					687.10	671.58	13'-9 1/4"	24'-6"	24.4

**Note:**

The foundation dimensions shown are based on the presence of mostly cohesive soils with an average Unconfined Compressive Strength (Qu) of at least 1.0 tsf, which must be determined by previous soil investigations at the jobsite. When other conditions are indicated, the boring data will be included in the plans and the foundation dimensions shown will be the result of site specific designs.

During construction, if footing length or width or wall height change by more than 12", or if reinforcement is changed, "as-built" plans shall be prepared and submitted to the District Bureau of Operations for future reference.

**DETAILS FOR 10" Ø SUPPORT FRAME**

H:\p\3384\2\west\design\structural\Overhead Sign Structure - Span\3384 1-80W 08 05-F3.dgn  
 Ciorba Group, Inc. CONSULTING ENGINEERS  
 1011 North Central Expressway  
 Suite 300, Chicago, Illinois 60658  
 Tel: 773.775.4000  
 Fax: 773.775.4014  
 Email: ciorba@ciorba.com

FILE NAME =	USER NAME = mthomas	DESIGNED - AMK	REVISED -
		CHECKED - BWS	REVISED -
PLOT SCALE =		DRAWN - SAT	REVISED -
PLOT DATE = 10/27/2010		CHECKED - BWS	REVISED -

**STATE OF ILLINOIS  
DEPARTMENT OF TRANSPORTATION**

**OVERHEAD SIGN STRUCTURES  
SPREAD FOOTING DETAILS**

SHEET NO. 8 OF 9 SHEETS

F.A.I. RTE.	SECTION	COUNTY	TOTAL SHEETS	SHEET NO.
80	99-5-Y	WILL	276	143
CONTRACT NO. 60147			ILLINOIS FED. AID PROJECT	