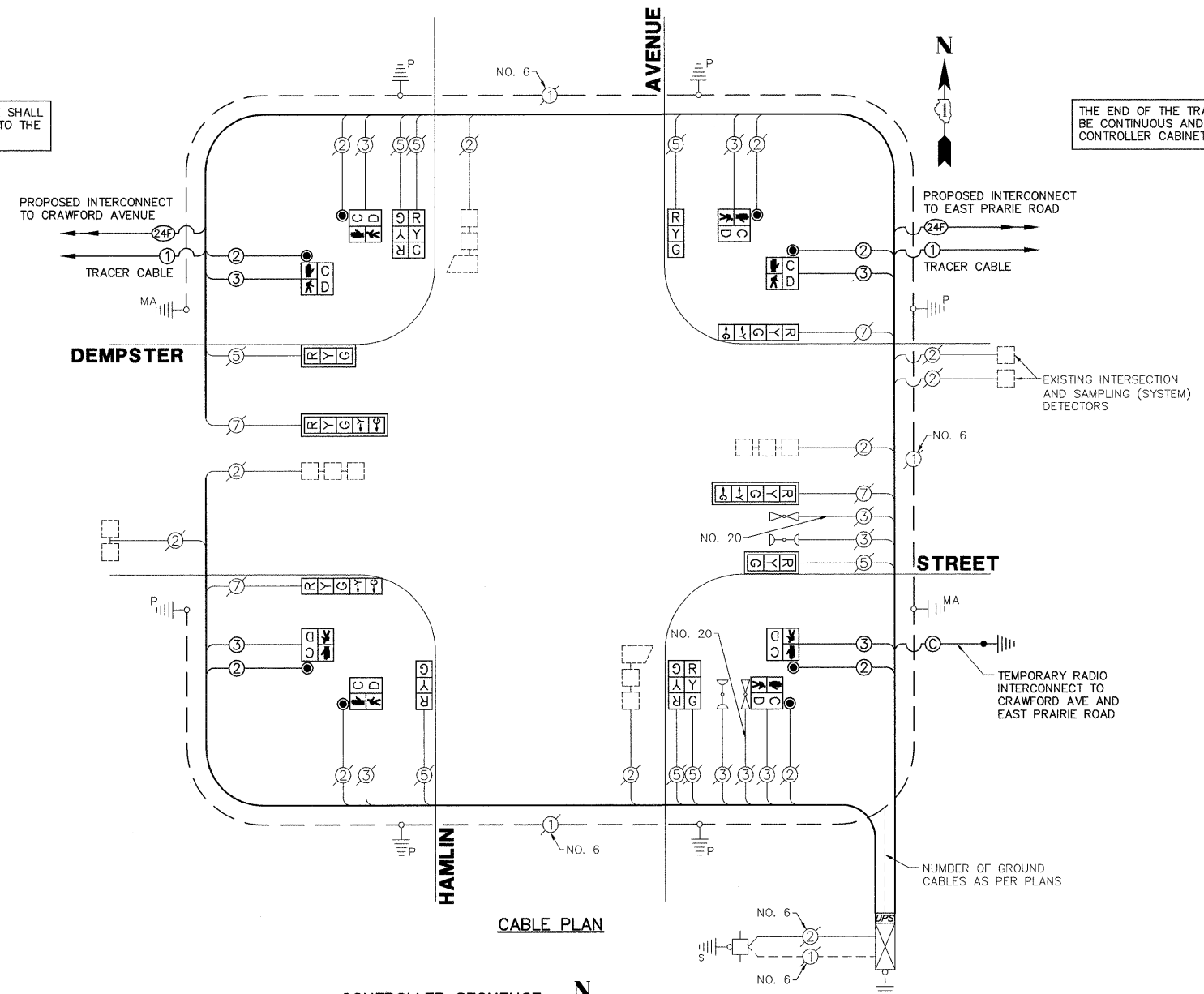


SCHEDULE OF QUANTITIES
DEMPSTER STREET AT HAMLIN AVENUE

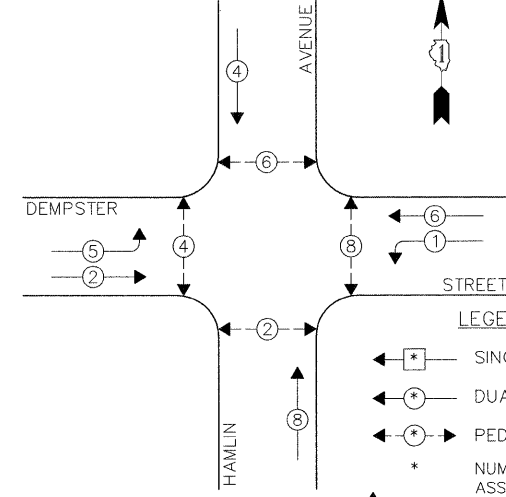
NO.	QUANT.	UNIT
1.	4	CU YD EARTH EXCAVATION
2.	15	SQ YD AGGREGATE BASE COURSE, TYPE B 4"
3.	875	SQ FT PORTLAND CEMENT CONCRETE SIDEWALK 5 INCH
4.	104	SQ FT DETECTABLE WARNINGS
5.	760	SQ FT SIDEWALK REMOVAL
6.	120	FOOT COMBINATION CURB AND GUTTER REMOVAL AND REPLACEMENT
7.	0.05	L SUM MOBILIZATION
8.	0.05	L SUM TRAFFIC CONTROL AND PROTECTION, STANDARD 701501
9.	0.05	L SUM TRAFFIC CONTROL AND PROTECTION, STANDARD 701606
10.	0.05	L SUM TRAFFIC CONTROL AND PROTECTION, STANDARD 701701
11.	0.05	L SUM TRAFFIC CONTROL AND PROTECTION, STANDARD 701801
12.	300	FOOT THERMOPLASTIC PAVEMENT MARKING - LINE 6"
13.	66	FOOT THERMOPLASTIC PAVEMENT MARKING - LINE 24"
14.	288	SQ FT THERMOPLASTIC PAVEMENT MARKING REMOVAL
15.	1	EACH MAINTENANCE OF EXISTING TRAFFIC SIGNAL INSTALLATION
16.	473	FOOT ELECTRIC CABLE IN CONDUIT, SIGNAL NO. 14 2C
17.	509	FOOT ELECTRIC CABLE IN CONDUIT, SIGNAL NO. 14 3C
18.	2	EACH SIGNAL HEAD, LED, 1-FACE, 3-SECTION, MAST-ARM MOUNTED
19.	2	EACH SIGNAL HEAD, LED, 1-FACE, 3-SECTION, BRACKET MOUNTED
20.	2	EACH SIGNAL HEAD, LED, 1-FACE, 5-SECTION, BRACKET MOUNTED
21.	2	EACH SIGNAL HEAD, LED, 1-FACE, 5-SECTION, MAST-ARM MOUNTED
22.	2	EACH SIGNAL HEAD, LED, 2-FACE, 3-SECTION, BRACKET MOUNTED
23.	8	EACH PEDESTRIAN SIGNAL HEAD, LED, 1-FACE, BRACKET MOUNTED WITH COUNTDOWN TIMER
24.	4	EACH TRAFFIC SIGNAL BACKPLATE, LOUVERED, ALUMINUM
25.	8	EACH PEDESTRIAN PUSH-BUTTON
26.	487	FOOT REMOVE ELECTRIC CABLE FROM CONDUIT
27.	1	EACH REMOVE EXISTING TRAFFIC SIGNAL EQUIPMENT
28.	1	EACH UNINTERRUPTIBLE POWER SUPPLY

THE END OF THE TRACER CABLE SHALL BE CONTINUOUS AND EXTEND INTO THE CONTROLLER CABINET.

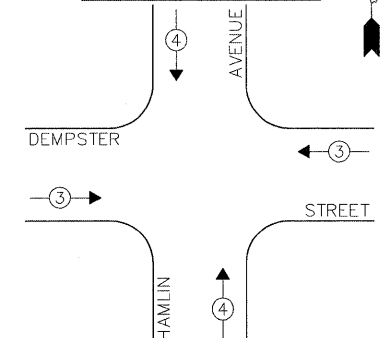
THE END OF THE TRACER CABLE SHALL BE CONTINUOUS AND EXTEND INTO THE CONTROLLER CABINET.



CONTROLLER SEQUENCE



EMERGENCY VEHICLE PREEMPTION SEQUENCE



- LEGEND:**
- ← * → SINGLE ENTRY PHASE
 - ← * DUAL ENTRY PHASE
 - ← * → PEDESTRIAN PHASE
 - * NUMBER REFERS TO ASSOCIATED PHASE
 - ← * OL → OVERLAP

EXISTING EMERGENCY VEHICLE PREEMPTORS	
EMERGENCY VEHICLE PREEMPTOR	3
MOVEMENT	4

EXISTING AND PROPOSED PHASE DESIGNATION DIAGRAM

I.D.O.T. TRAFFIC SIGNAL INSTALLATION ELECTRICAL SERVICE REQUIREMENTS					TOTAL WATTAGE
TYPE	NO. LAMPS	INCAND.	L.E.D.	% OPERATION	
SIGNAL (RED)	12	135	17	0.50	102.0
SIGNAL (YELLOW)	12	135	25	0.25	75.0
SIGNAL (GREEN)	12	135	15	0.25	45.0
ARROW	8	135	12	0.10	9.6
PED. SIGNAL	8	90	25	1.00	200.0
CONTROLLER	-	-	100	1.00	-
LUMINAIRE	-	-	250	0.50	-
L.E.D. ST. NAME SIGN	-	-	64	0.50	-
VIDEO SYSTEM	-	-	150	1.00	-
BATTERY BACKUP	1	-	25	1.00	25.0
ILLUMINATED SIGN	-	-	25	0.05	-
TOTAL =					456.6

ENERGY COSTS - BILLED TO: IDOT - DISTRICT 1
(ADDRESS) 201 W. CENTER COURT
(ADDRESS) SCHAUMBURG, IL 60196
ENERGY SUPPLY - CONTACT: LARRY SHANK
PHONE: (847) 816-5465
COMPANY: COM-ED

THE TRAFFIC SIGNAL CONTROL EQUIPMENT FOR THIS PROJECT SHALL BE "ECONOLITE" TO MATCH THE EXISTING ADJACENT SYSTEM.