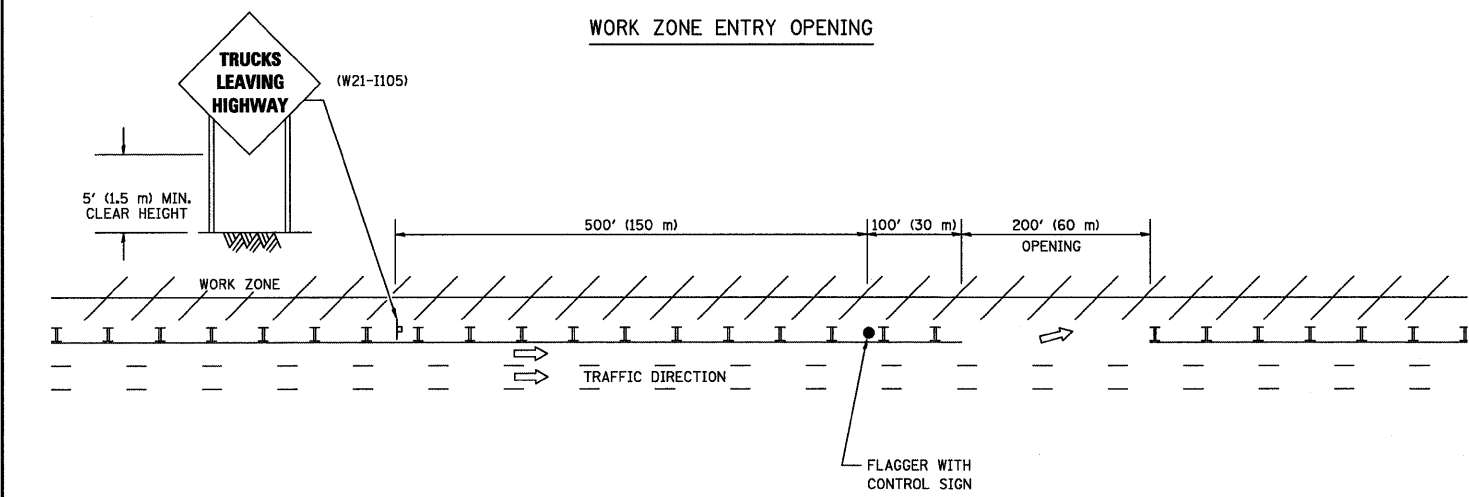
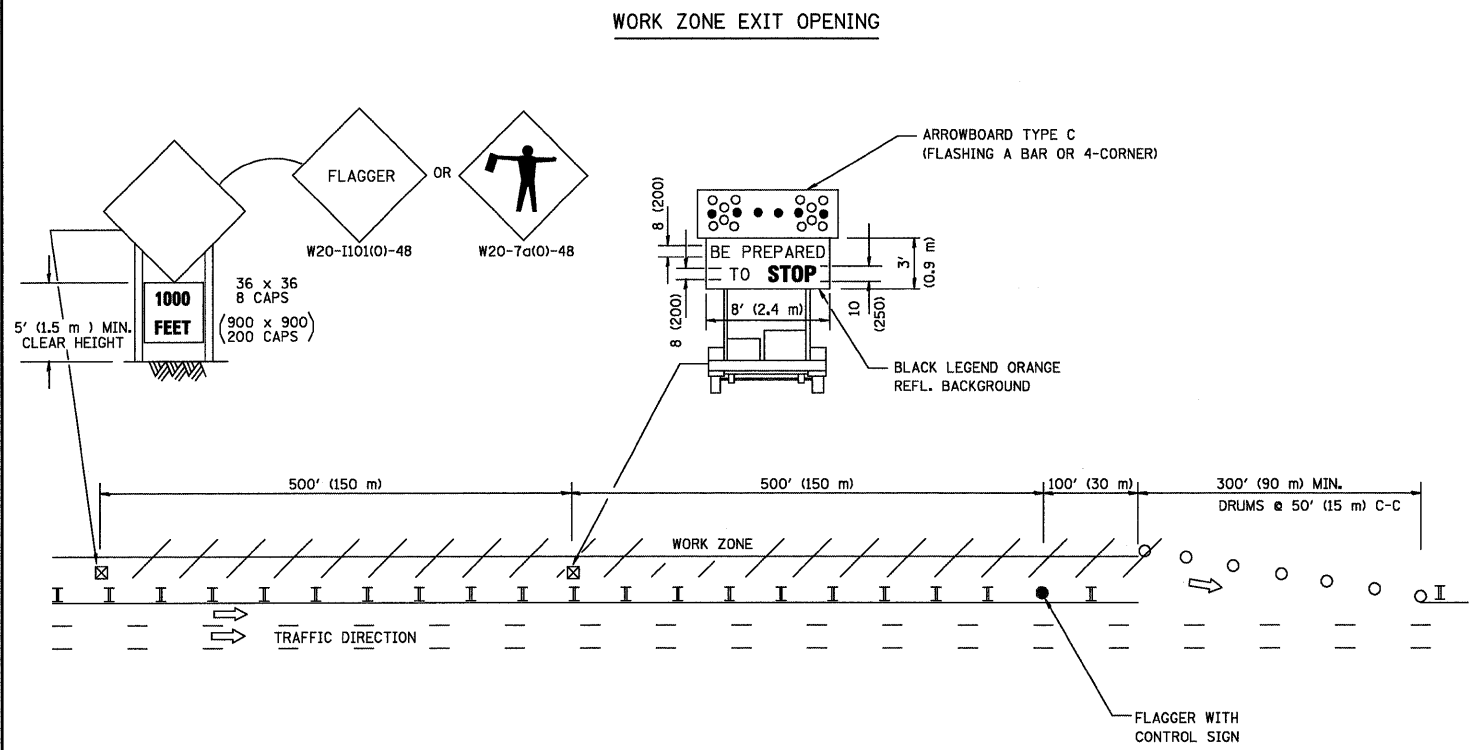


SIGNING FOR FLAGGING OPERATIONS AT WORK ZONE OPENING

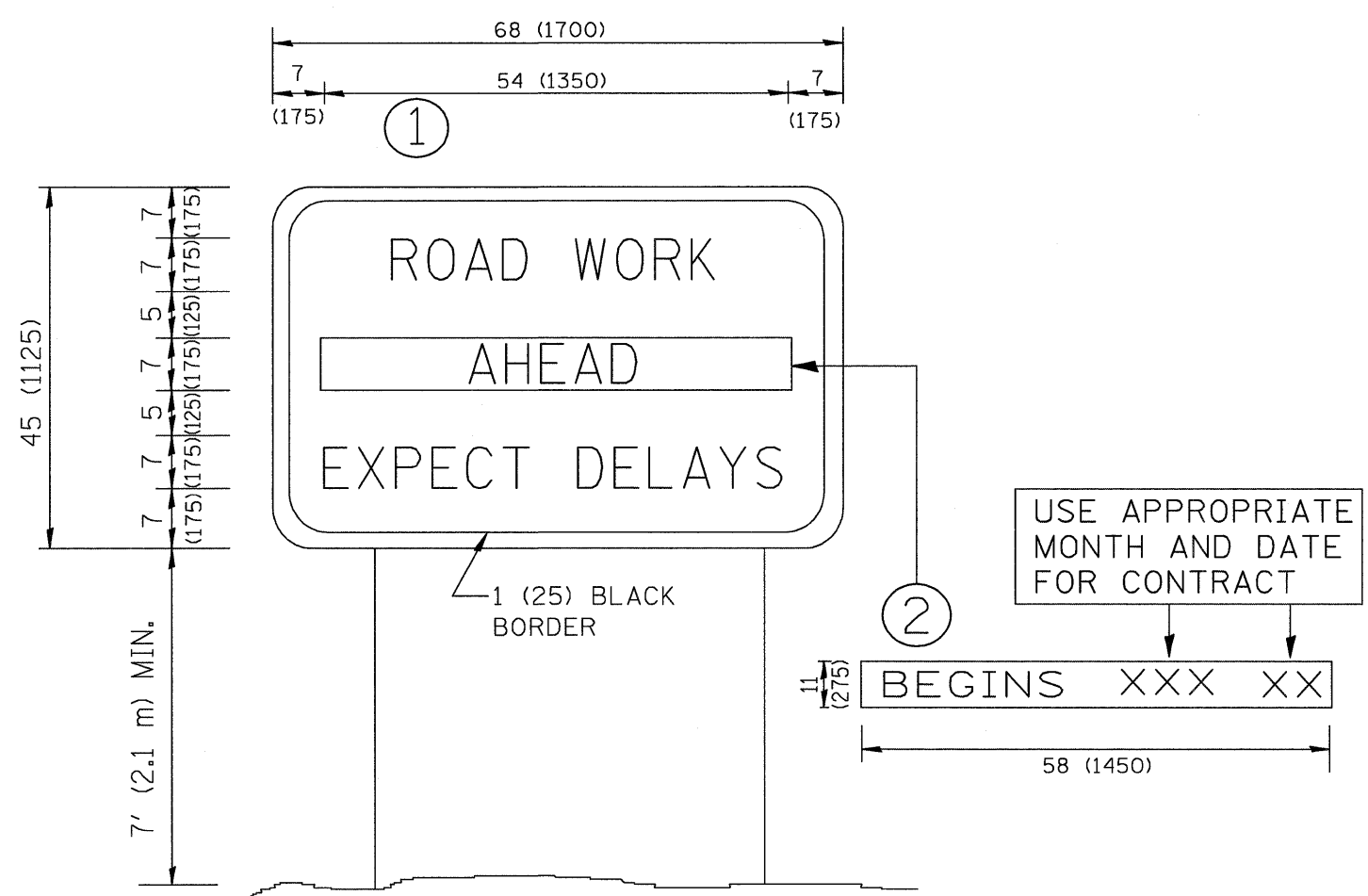


- NOTES:**
1. THE ARROWBOARD, THE FLAGGER AHEAD SIGN AND THE TRUCKS LEAVING HIGHWAY SIGN SHALL BE REMOVED OR TURNED AWAY FROM TRAFFIC AND THE EXIT AND ENTRY OPENINGS SHALL BE CLOSED WHEN THE FLAGGING OPERATION CEASES. NON OPERATING EQUIPMENT SHALL COMPLY WITH ARTICLE 701.11
 2. WORK ZONE EXIT OPENINGS SHOULD BE A MINIMUM OF ONE HALF MILE APART.
 3. EXITING THE WORK ZONE AT ANY PLACE OTHER THAN AT A WORK ZONE EXIT OPENING WILL BE PROHIBITED.
 4. ALL VEHICLES SHALL ENTER THE WORK ZONE AT ENTRY OPENINGS, USING THEIR TURN SIGNALS TO WARN MOTORISTS

TC-18, LATEST REVISION DATE: 12-09

ALL DIMENSIONS ARE IN INCHES (MILLIMETERS) UNLESS OTHERWISE SHOWN

ARTERIAL ROAD INFORMATIONAL SIGN



NOTES:

1. USE BLACK LETTERING ON ORANGE BACKGROUND.
2. ERECT SIGNS IN ADVANCE OF THE LOCATION FOR THE "ROAD CONSTRUCTION AHEAD" SIGN AT LOCATIONS AS DIRECTED BY THE ENGINEER.
3. ERECT SIGN ① WITH INSTALLED PANEL ② ONE WEEK PRIOR TO THE START OF CONSTRUCTION.
4. REMOVE PANEL ② SOON AFTER THE START OF CONSTRUCTION.
5. SEE SPECIAL PROVISION FOR "TEMPORARY INFORMATION SIGNING" FOR ADDITIONAL INFORMATION.
6. ONE SIGN ASSEMBLY EQUALS 25.70 SQ. FT. (2.3 SQ. M.)
7. SHALL BE PAID FOR AS TEMPORARY INFORMATION SIGNING.

ALL DIMENSIONS ARE IN INCHES (MILLIMETERS) UNLESS OTHERWISE SHOWN.

TC-22, LATEST REVISION DATE: 01-31-07

| | | | | | | | | | | | | |
|----------------------------------|---------------------------|-------------------|-----------|---|--|---------------------|--------------|--------------------------|--------------------|-------------|-----------------|--------------|
| FILE NAME = 4085.867-872-D11.dwg | USER NAME = ZACH WALLSTEN | DESIGNED - JRD | REVISED - | STATE OF ILLINOIS DEPARTMENT OF TRANSPORTATION | DISTRICT 1 STANDARD DETAILS | | | FAP. RTE. VARIES | SECTION 2010-006TS | COUNTY COOK | TOTAL SHEETS 58 | SHEET NO. 54 |
| PLOT SCALE = 1" = .0833' | CHECKED - KLB | DATE - 10/29/2010 | REVISED - | | SCALE N.A. | SHEET NO. OF SHEETS | STA. TO STA. | TC-18 & TC-22 | | CONTRACT #: | 60K24 | |
| | | | | | GHA #4085.867-872 ILLINOIS FED. AID PROJECT | | | | | | | |