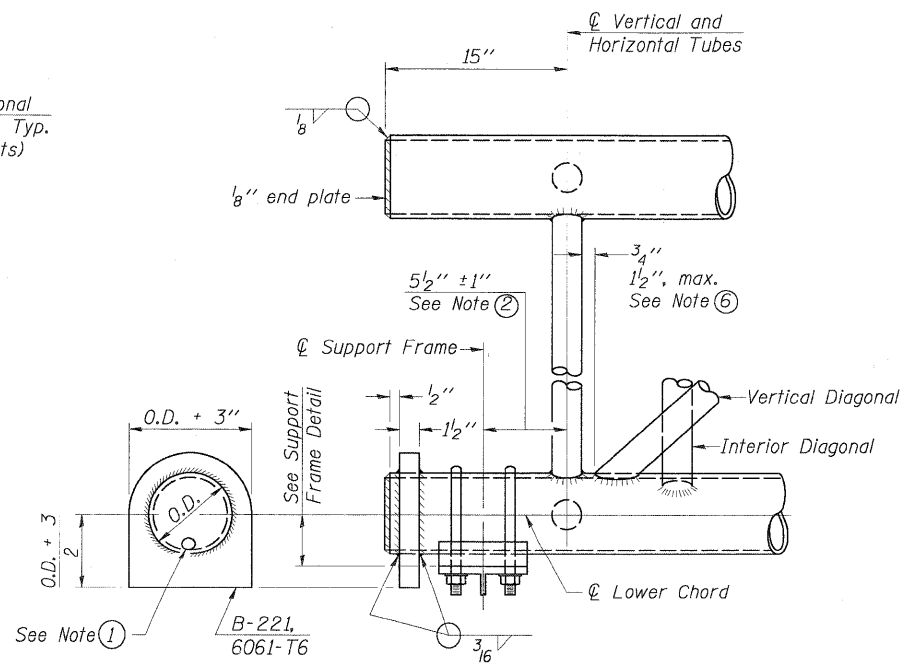
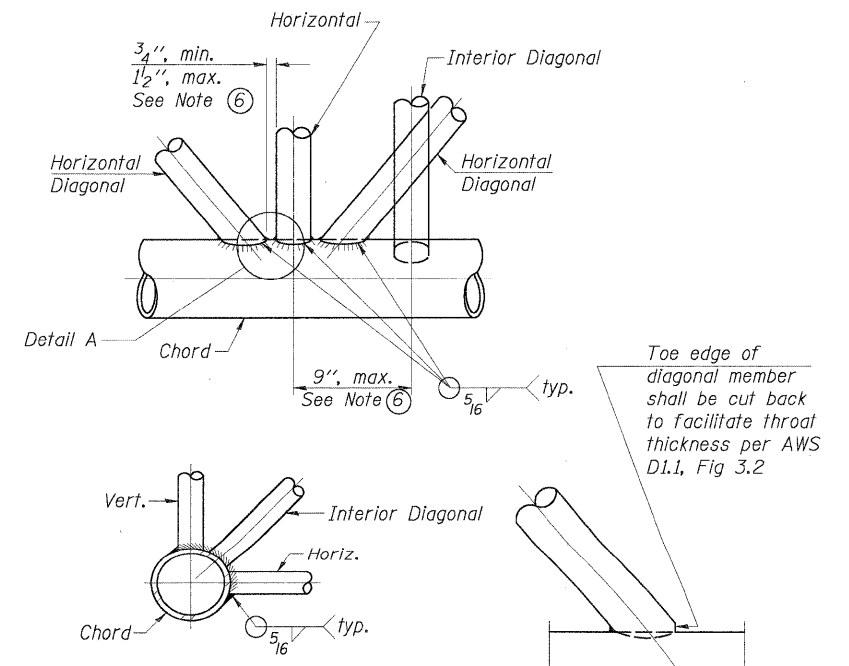


**ELEVATION
TYPICAL INTERIOR UNIT**
Even number of panels/interior unit required.

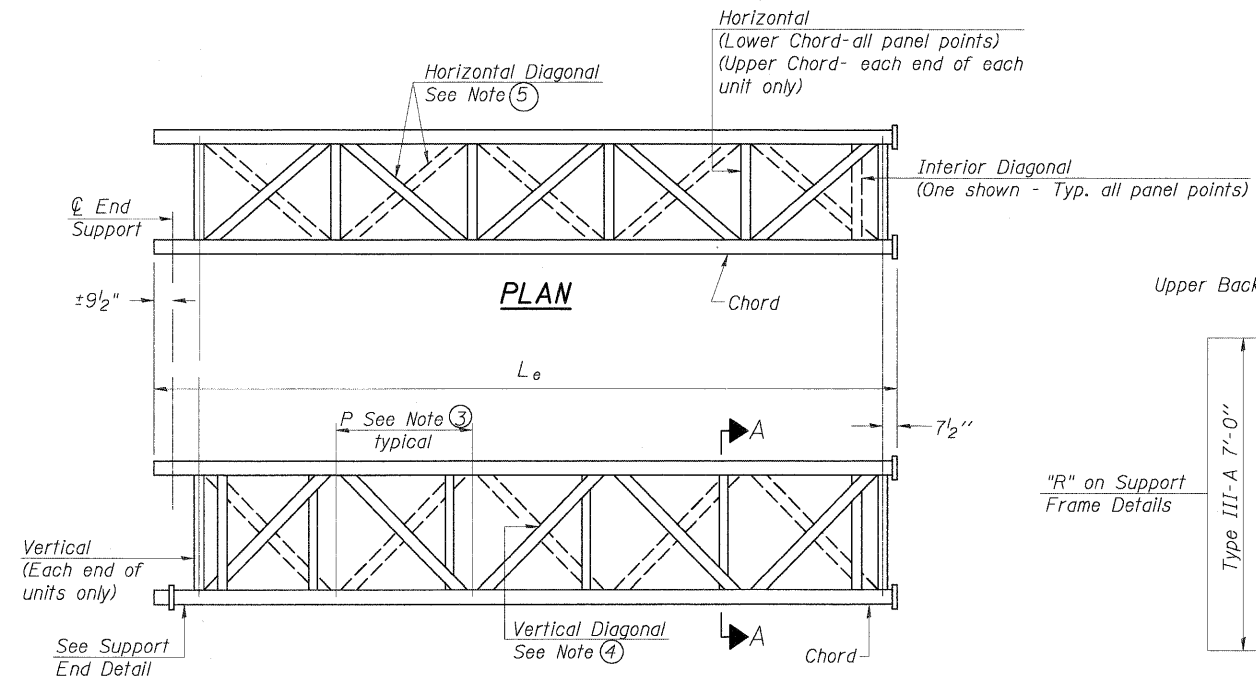


SUPPORT END DETAIL FOR EXTERIOR UNIT

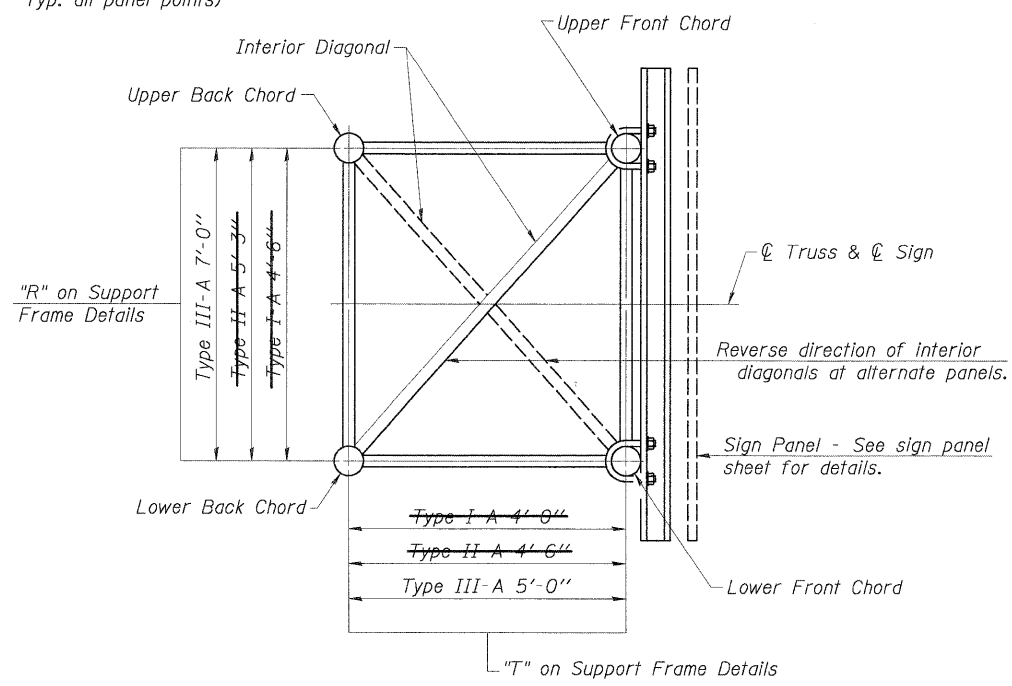


TYPICAL JOINT DETAILS

DETAIL A



**ELEVATION
TYPICAL EXTERIOR UNIT**
Even or odd number of panels/exterior units allowed.



SECTION A-A

NOTES

- ① Contractor may alternatively use standard aluminum drive-fit cap to close end. 1/2" φ drain hole in end plate/drive-fit cap. (Typ. at ends of all chords)
- ② 5 1/2" end dimension may vary by ± 1" to provide uniform panel spacing (P).
- ③ Panel spacing (P) shall be uniform for entire truss and between 4'-0" and 5'-0" for Type I-A or 4'-0" and 5'-6" for Types II-A and III-A.
- ④ Vertical Diagonals in front and back face shall alternate.
- ⑤ Hidden lines show wind bracing alternates direction between planes of top and bottom chords.
- ⑥ All diagonals shall be detailed for minimum offset from the panel point based on the following: Offset shall be such as to provide a 3/4" minimum to 1 1/2" maximum clearance between any diagonal and any horizontal or vertical member, and to provide clearance for U-bolt connections of signs or walkway brackets.

N:\Users\070122-2009023\Structure\070122-52.SHT

<p>CHRISTOPHER B. BURKE ENGINEERING, LTD. 9575 W. Higgins Road, Suite 600 Rosemont, Illinois 60018 (847) 823-0500</p>	USER NAME = PRAZALAN	DESIGNED - JMB	REVISED -	STATE OF ILLINOIS DEPARTMENT OF TRANSPORTATION	F.A.I. 80 FOR NS RAILROAD TO US 45 OVERHEAD SIGN STRUCTURES - ALUMINUM TRUSS DETAILS FOR TRUSS TYPES I-A, II-A AND III-A	F.A.I. RTE. 80	SECTION 99 (5&5-1) Y-1	COUNTY WILL	TOTAL SHEETS 180	SHEET NO. 180	
	PLOT SCALE = 1'	DRAWN - PDR	REVISED -			SCALE:	SHEET NO. OF SHEETS STA. TO STA.	CONTRACT NO. 60M59			
	PLOT DATE = 12/23/2010	CHECKED - MM	REVISED -			DATE - 12/23/2010	ILLINOIS FED. AID PROJECT				