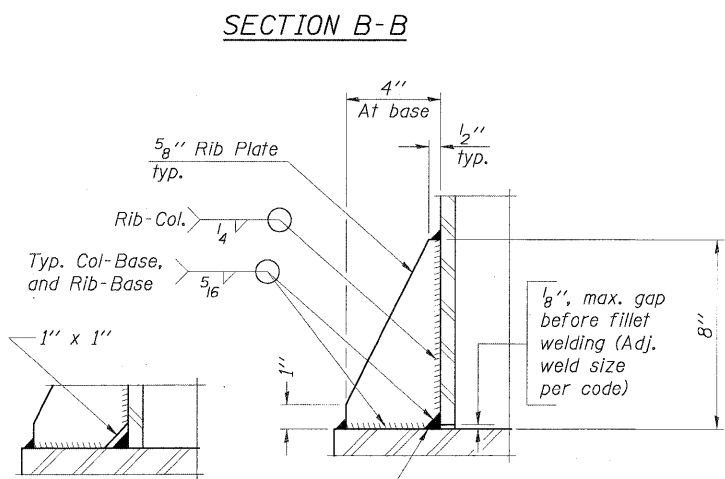
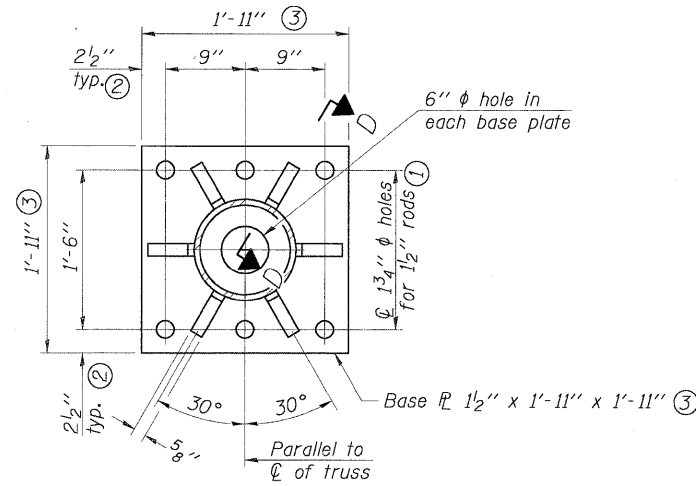
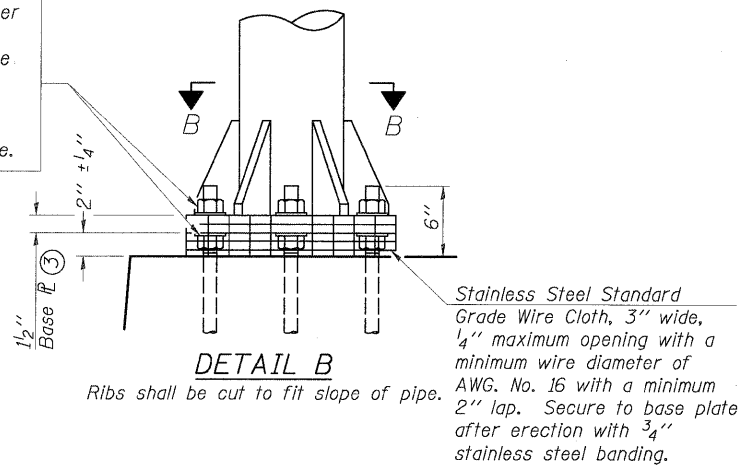
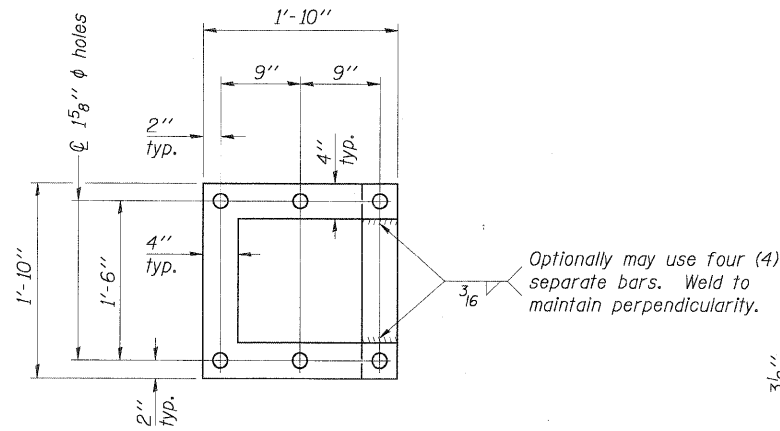


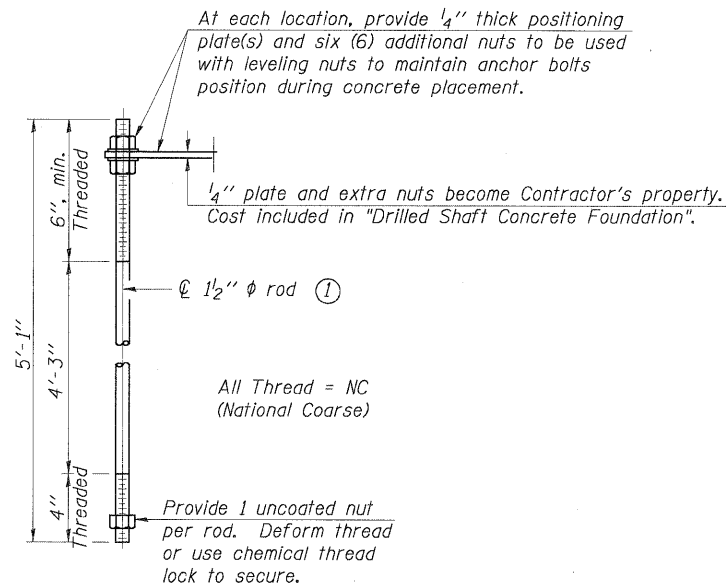
Hexagon locknut and washer (top), leveling nut and washer (bottom). Galvanize per AASHTO M232. Nuts shall each be tightened against base plate with 200 lb.-ft. minimum torque.



** Alternate detail if welding col. to base plate first, then snip inside corner of ribs. Terminate weld on rib 1/4" from snip.



POSITIONING PLATE(S)



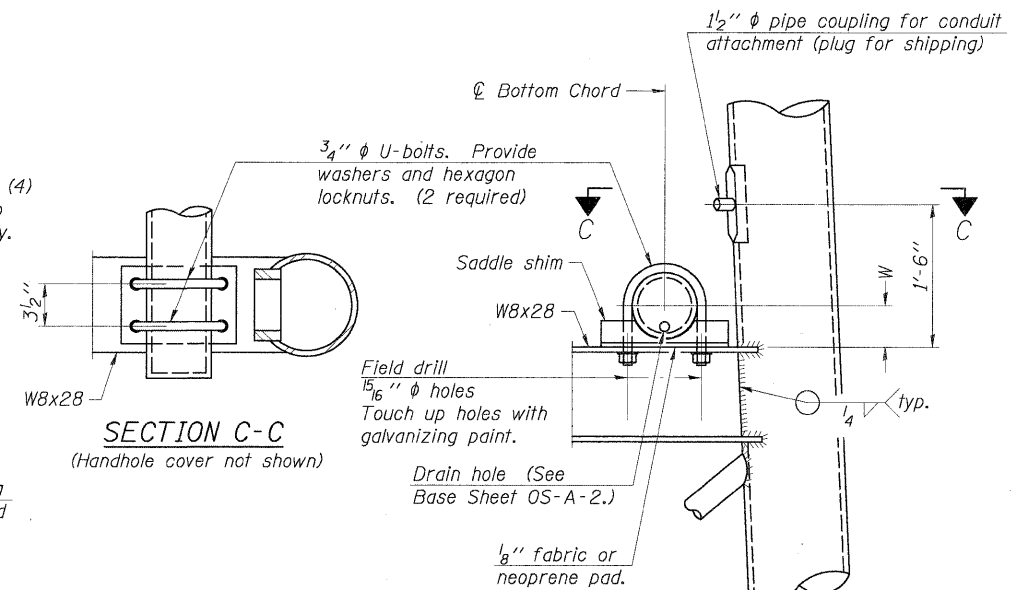
ANCHOR ROD DETAIL

Anchor rods shall conform to AASHTO M314 Grade 36 or 55 and meet Charpy V-Notch (CVN) energy of 15 lb.-ft. at 40° F. Galvanize upper 12" per AASHTO M232. No welding shall be permitted on rods.

**TYPE III-A TRUSS
12" ϕ PIPE SUPPORT FRAME DETAILS**

Notes:
For Type III-A Truss spans greater than 150 ft. and up to 160 ft.:

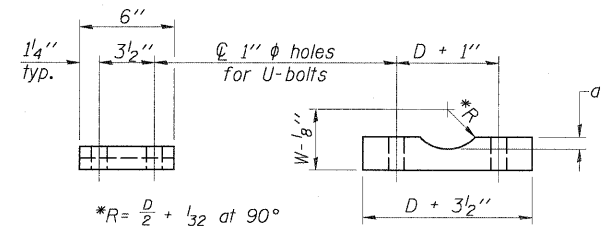
- ① 1 3/4" ϕ rod, 2" ϕ holes
- ② 2 3/4" edge distance
- ③ Base PL 1 5/8" x 1'-11 1/2" x 1'-11 1/2"



SECTION C-C

(Handhole cover not shown)

DETAIL C



Truss Chord Nominal Dia.	a
7"	1"
8 1/2"	1 1/4"
9"	1 3/8"

SADDLE SHIM DETAIL
ASTM B26 Alloy 356-F
or
ASTM B209 Alloy 6061-T651
(4 required per sign truss)

**STATE OF ILLINOIS
DEPARTMENT OF TRANSPORTATION**

**F.A.I. 80 FOR NS RAILROAD TO US 45
OVERHEAD SIGN STRUCTURES
SUPPORT FRAME FOR TYPE III-A ALUMINUM TRUSS**

F.A.I. RTE.	SECTION	COUNTY	TOTAL SHEETS	SHEET NO.
80	99 (5&5-1) Y-1	WILL		188N.
				CONTRACT NO. 60M59
ILLINOIS FED. AID PROJECT				

CHRISTOPHER B. BURKE ENGINEERING, LTD.
9576 W. Higgins Road, Suite 600
Rosemont, Illinois 60018
(847) 823-0500

USER NAME	DESIGNED	REVISIONS
PRAZALAN	JMB	
	PDR	
	MM	