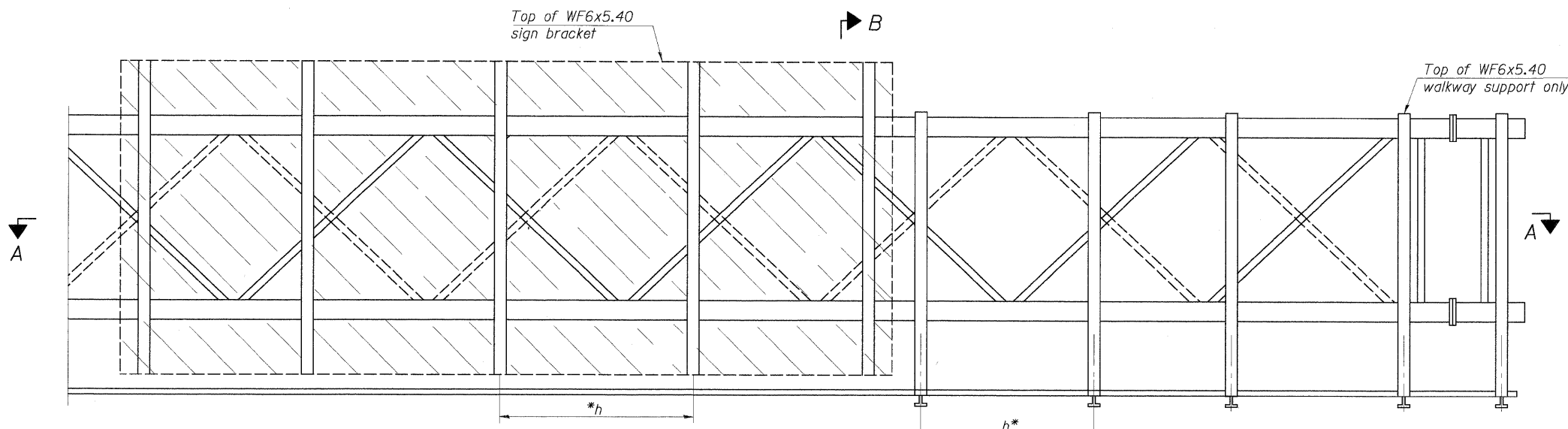
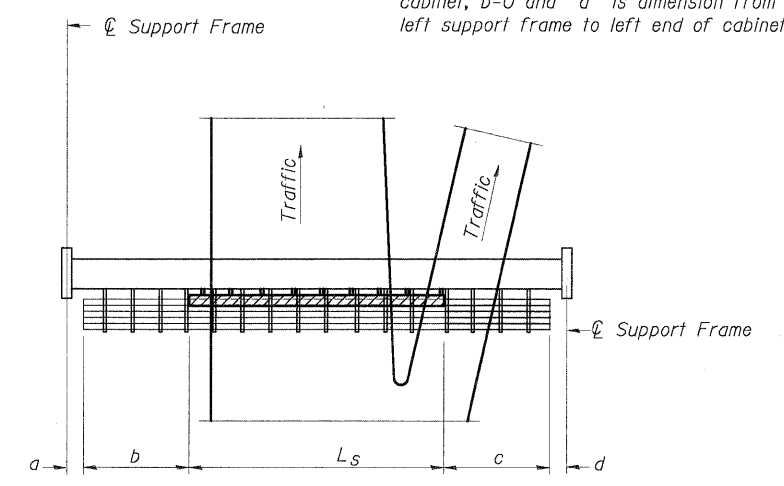


① If walkway is required left of the DMS cabinet, a=1'-6" and b=walkway lengths. If walkway is not required left of the DMS cabinet, b=0 and "a" is dimension from left support frame to left end of cabinet.

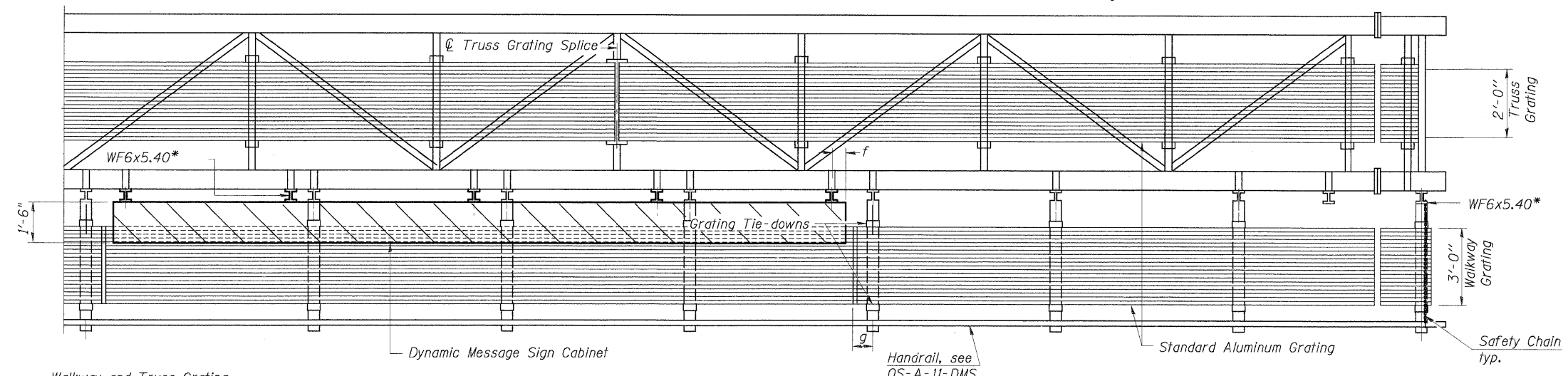


TYPICAL FRONT ELEVATION
With handrail omitted for clarity.

Bracket and grating dimensions are nominal and will vary based on actual DMS cabinet dimensions plus manufacturer's mounting devices.



PLAN
WALKWAY AND HANDRAIL SKETCH
(Road plan beneath truss varies)



Walkway and Truss Grating width dimensions are nominal and may vary ±1/2" based on available standard widths.

Truss grating to facilitate inspection shall run full length (center to center of support frames) ±12" on overhead trusses. Cost of truss grating is included in "Overhead Sign Structure".

SECTION A-A

Handrail and walkway shall span a minimum of three brackets between splices and/or gap joints. Place all sign and walkway brackets as close to panel points as practical. Grating and handrail splices placed as needed.

BRACKET TABLE

WF6x5.40 ASTM B308, Alloy 6061-T6		
Sign Width		Number Brackets Required
Greater Than	Less Than or Equal To	
8'-0"	8'-0"	2
14'-0"	14'-0"	3
20'-0"	20'-0"	4
26'-0"	26'-0"	5
32'-0"	32'-0"	6

Notes:
* Space walkway brackets WF6x5.40 for efficiency and within limits shown:

f = 12" maximum, 4" minimum (End of sign to center of nearest bracket)
g = 12" maximum, 4" minimum (End of walkway grating to center of nearest support bracket)
h = 6'-0" maximum (center to center sign and/or walkway support brackets, WF6x5.40)

Maximum DMS weight = 5000 lbs. 4'-2" maximum cabinet depth includes depth of cabinet plus connection to WF6x5.40.
For Section B-B and Grating Splice Details, see Sheet S-8.
For Handrail Splice Details, see Sheet S-9.

Structure Number		a	b	c	d	L _s	Walkway Grating and Handrail Lengths
IS0991080R013.0	570+00 EB I80	25'-0"	4'-0"	4'-0"	27'-0"	30'-0"	38'-0"
IS0991080L020.9	1010+00 WB I80	9'-6"	7'-0"	7'-0"	46'-6"	30'-0"	44'-0"
IS0991080R022.2	1080+00 EB I80	9'-6"	7'-0"	7'-0"	46'-6"	30'-0"	44'-0"

N:\data\1010122\00003 Structures\1010122-57.SHT