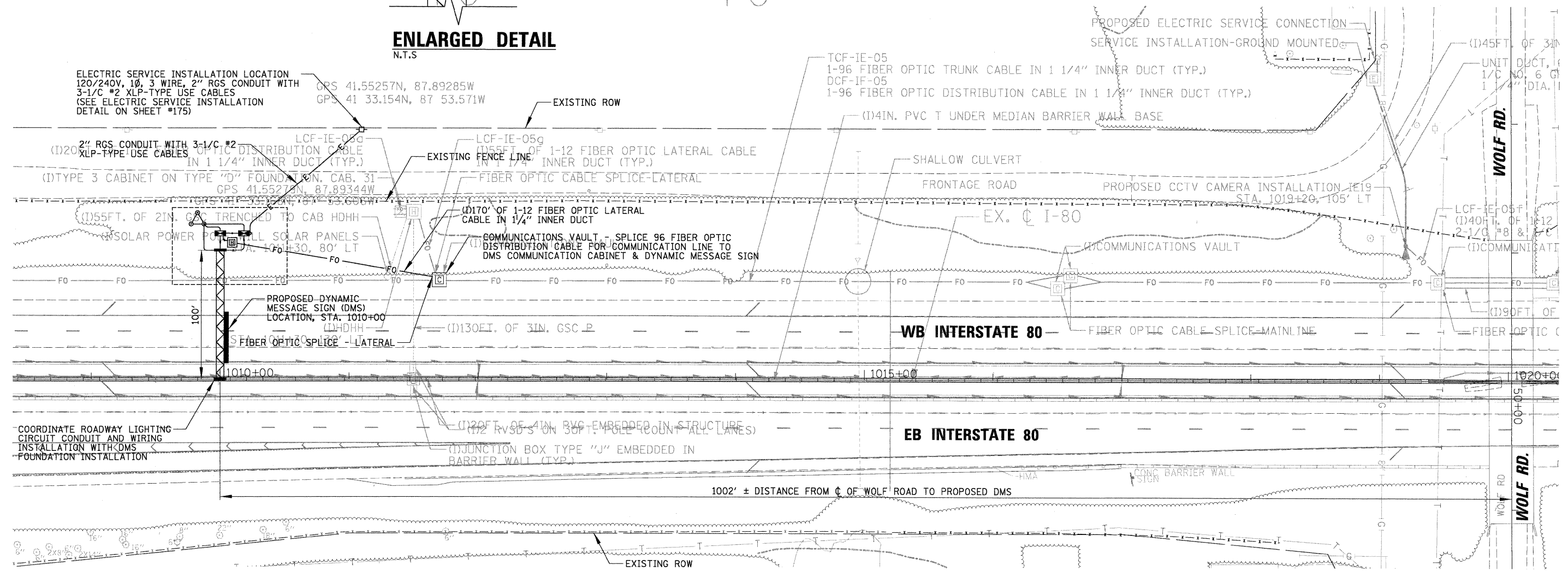


**ENLARGED DETAIL**  
N.T.S.



N:\1\1011\101122\_000023\_Mech\101122\_03\_02\_Plan.dwg  
 12/23/2010 10:58:11 AM

**CHRISTOPHER B. BURKE ENGINEERING, LTD.**  
 9575 W. Higgins Road, Suite 600  
 Rosemont, Illinois 60018  
 (847) 823-0500

|                        |                   |           |
|------------------------|-------------------|-----------|
| USER NAME = KBALDWIN   | DESIGNED - GAH    | REVISED - |
| PLOT SCALE = 48"       | DRAWN - KWB/GF    | REVISED - |
| PLOT DATE = 12/23/2010 | CHECKED - JPC     | REVISED - |
|                        | DATE - 12/23/2010 | REVISED - |

**STATE OF ILLINOIS**  
**DEPARTMENT OF TRANSPORTATION**

**F.A.I. 80 FOR NS RAILROAD TO US 45**  
**DMS POWER AND COMMUNICATION CABINET LAYOUT PLAN**  
**WOLF ROAD**

SCALE: 1" = 40' SHEET NO. OF SHEETS STA. TO STA.

|                    |                        |             |                    |                           |
|--------------------|------------------------|-------------|--------------------|---------------------------|
| F.A.I. RTE. 80     | SECTION 99 (5&5-1) Y-1 | COUNTY WILL | TOTAL SHEETS 100C. | SHEET NO. 100C.           |
| CONTRACT NO. 60M59 |                        |             |                    | ILLINOIS FED. AID PROJECT |

Added Sheet 1-3-11