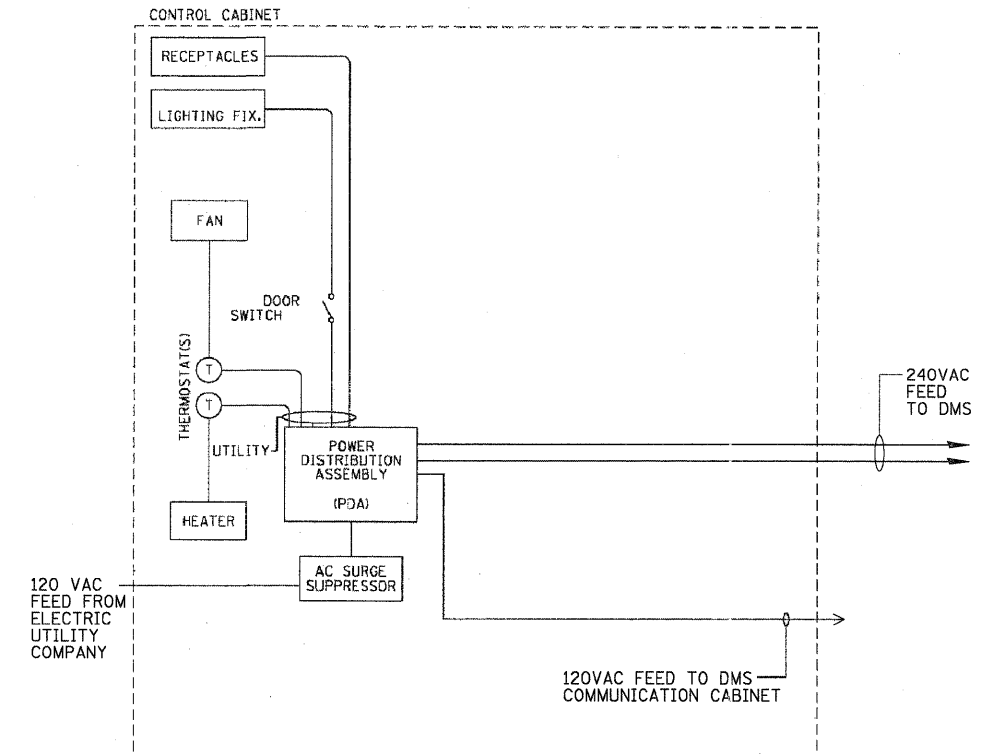


BILL OF MATERIALS

ITEM	QTY	DESCRIPTION
A	4	HUBBELL 5362A RECPT
B	1	LEVITON 9726-C LIGHT FIXTURE
C	1	HOFFMAN DAH2001A HEATER
D	1	GRAINGER 2E370-8 FAN CONTROL
E	1	GRAINGER 4WT47-1 FAN
F	1	GRAINGER 4YDB7-3 FAN GUARD
G	1	C/H FDB2020 2P 20A BREAKER
H	2	C/H EHD1030 1P 30A BREAKERS
I	1	C/H EHD1010 1P 10A BREAKER
J	1	C/H EHD2040 2P 40A BREAKER
K	1	MCG 407 SURGE
L	2	AUXEL 38032 SPLICE BLOCKS
M	2	ILSCO NB-120 GROUND/NEUTRAL BUS
N	1	JEFFERSON 411-0131-000 7.5KVA XFORMER
D	1	LITTLEFUSE V10E130P VARISTOR (NOT SHOWN)

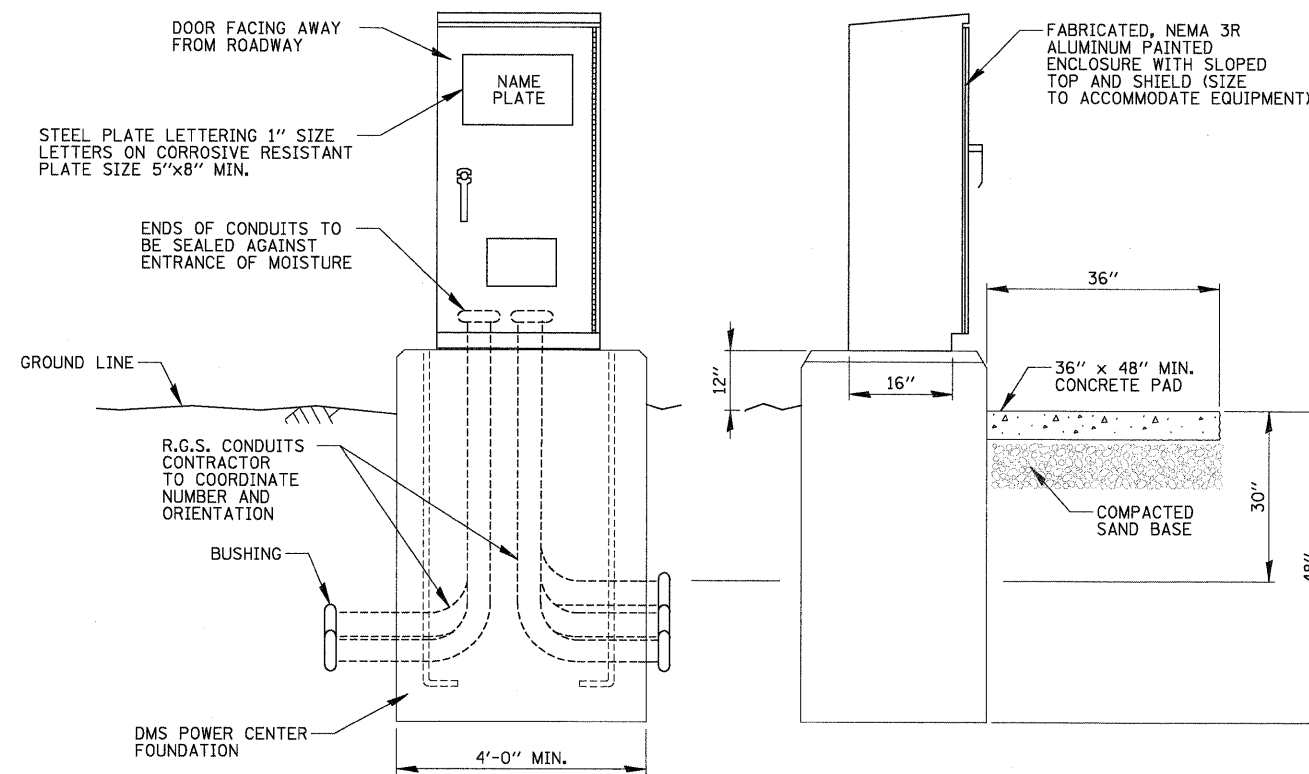
POWER CABINET EQUIPMENT LAYOUT PLAN



NOTES:

1. SEE DRAWING NO. 148 ELECTRICAL SYMBOLS AND ABBREVIATIONS.
2. FIBER OPTIC CABLE AND TERMINATIONS AS SHOWN ON COMM PLANS AND DETAIL SHEETS.

POWER CABINET SINGLE LINE DIAGRAM (TYPICAL)



DMS POWER CABINET AND FOUNDATION
N.T.S.

N:\Ideas\090122_000003\Mech\090122_03_DET_05.dwg

CHRISTOPHER B. BURKE ENGINEERING, LTD.
9575 W. Higgins Road, Suite 600
Rosemont, Illinois 60018
(847) 823-0900

USER NAME = KBALDWIN	DESIGNED - GAH	REVISED -
PLOT SCALE = 1'	DRAWN - FPB	REVISED -
PLOT DATE = 12/23/2010	CHECKED - JPC	REVISED -
	DATE - 12/23/2010	REVISED -

STATE OF ILLINOIS
DEPARTMENT OF TRANSPORTATION

F.A.I. 80 FOR NS RAILROAD TO US 45
DYNAMIC MESSAGE SIGN
POWER CABINET DETAILS

SCALE: N.T.S. SHEET NO. OF SHEETS STA. TO STA.

Added Sheet 1-3-11

F.A.I. RTE.	SECTION	COUNTY	TOTAL SHEETS	SHEET NO.
80	99 (5&5-1) Y-1	WILL		100F
				CONTRACT NO. 60M59
ILLINOIS FED. AID PROJECT				

DT-05
DMS-5 OF DMS-7