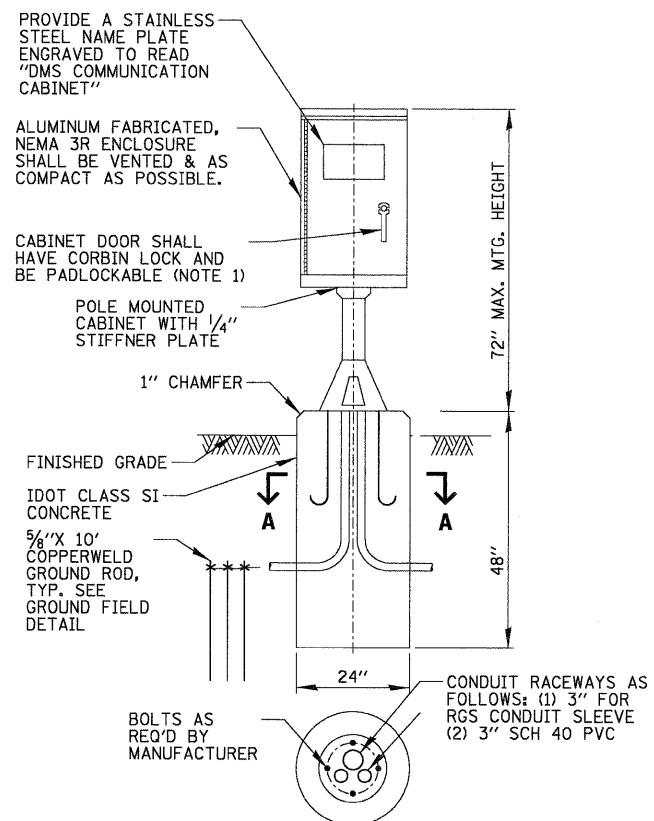


**NOTES:**

- SEE DRAWING No. 148 FOR ELECTRICAL SYMBOLS AND ABBREVIATIONS.
- FIBER OPTIC CABLES AND SWITCHES MUST BE SHOWN IN THE COMMUNICATIONS DRAWINGS AND SPECIFICATIONS.
- SEE DRAWINGS No. DYNAMIC MESSAGE SIGN SITE LAYOUT FOR CONDUIT AND CABLE SIZES.
- A DEDICATED LEASED LINE CONNECTION AND MODEM WILL BE TEMPORARILY USED FOR SIGN DMS-1. TEMPORARY CONNECTIONS WILL REQUIRE FIBER OPTIC DATA TRANSCEIVERS ONCE THE COMMUNICATION NETWORK IS IN PLACE.

**DMS COMMUNICATION INTERFACE DETAILS**

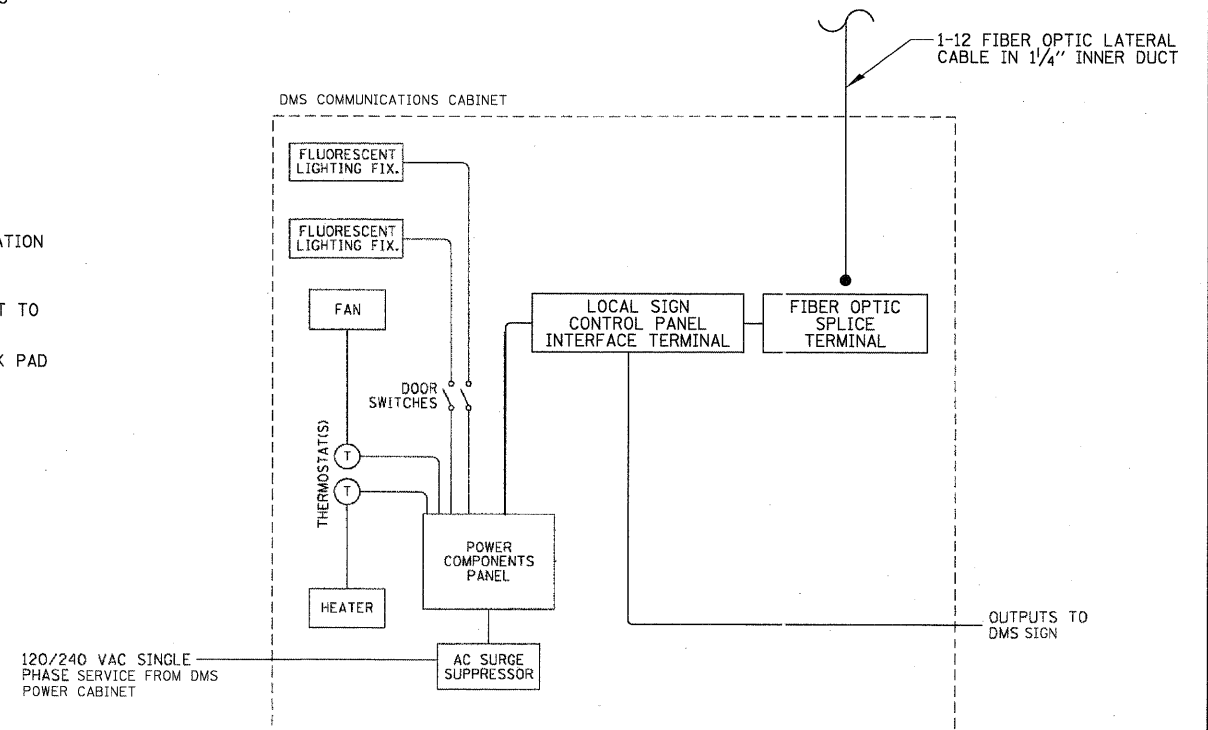


**NOTES:**

- SEE PLAN DRAWINGS FOR DOOR ORIENTATION.
- ITEMS SHOWN ABOVE INCLUDING CABINET, CONCRETE FOUNDATION SHALL BE INCLUDED IN THE PAY ITEM FOR DMS SIGN.
- SEE SPECIFICATION FOR VMS-55-06 DMS FRONT ACCESS, FULL MATRIX, NTCIP 1203 V2 COLOR (IDOT) FOR EQUIPMENT TO BE INSTALLED INSIDE CABINET.
- WHERE NO SIDEWALK EXISTS, A 24"x30"x5" CONCRETE WORK PAD SHALL BE PROVIDED IN FRONT OF THE CABINET.

**DMS COMMUNICATION CABINET AND FOUNDATION**

N.T.S.



**NOTES:**

- SEE DRAWING No. << >> FOR DYNAMIC MESSAGE SIGN SITE LAYOUT, FOR CONDUIT AND CABLE SIZES.
- SEE DRAWING DT-05 FOR CONNECTION TO DMS POWER CABINETS.

**DMS COMMUNICATION CABINET LINE DIAGRAM (TYPICAL)**

(FOR INFORMATION ONLY, SEE SPECIFICATIONS FOR EQUIPMENT LIST)

N:\aest\090122\_000023\Mech\090122\_03\_DET\_065.dwg

**CHRISTOPHER B. BURKE ENGINEERING, LTD.**  
9575 W. Higgins Road, Suite 600  
Rosemont, Illinois 60018  
(847) 623-0500

USER NAME = KBALOWIN	DESIGNED - GAH	REVISED -
PLOT SCALE = 1'	DRAWN - FPB	REVISED -
PLOT DATE = 12/23/2010	CHECKED - JPC	REVISED -
	DATE - 12/23/2010	REVISED -

**STATE OF ILLINOIS  
DEPARTMENT OF TRANSPORTATION**

**F.A.I. 80 FOR NS RAILROAD TO US 45  
DYNAMIC MESSAGE SIGN  
COMMUNICATION CABINET DETAILS**

SCALE: N.T.S. SHEET NO. OF SHEETS STA. TO STA.

*Added Sheet 1-3-10*

F.A.I. RTE.	SECTION	COUNTY	TOTAL SHEETS	SHEET NO.
80	99 (5&5-1) Y-1	WILL	1000	1000
				CONTRACT NO. 60M59
ILLINOIS FED. AID PROJECT				

DT-06  
DT-07