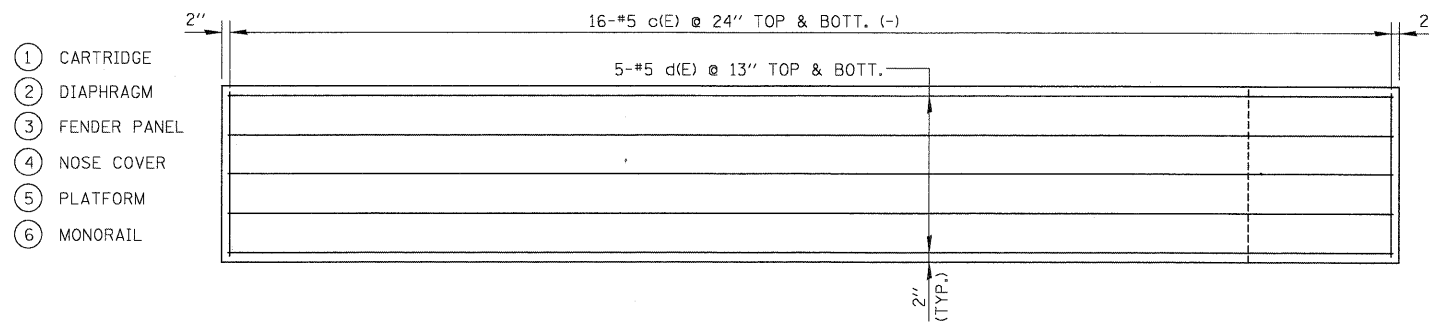
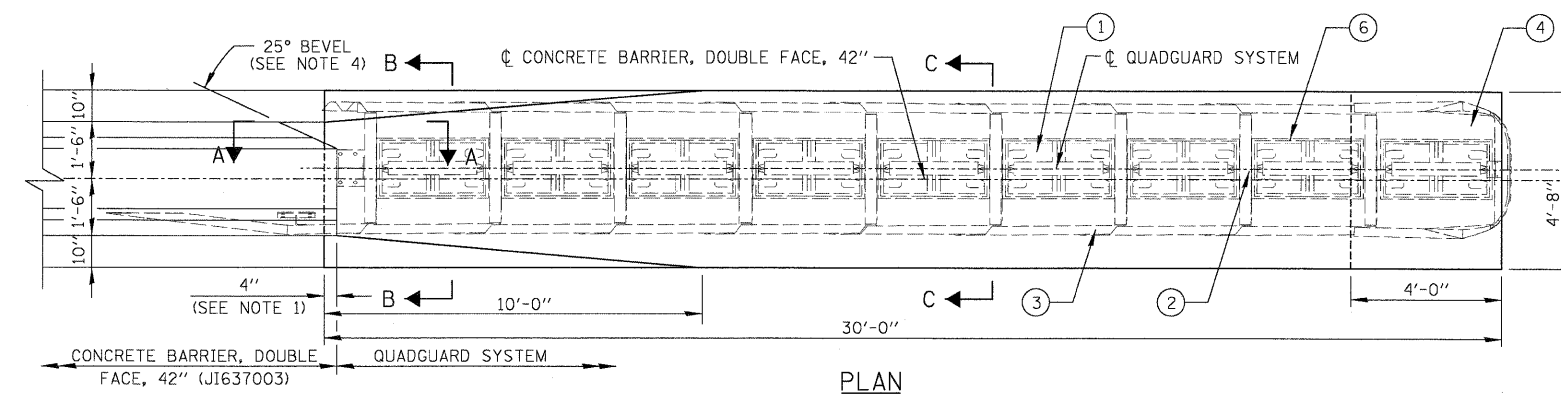
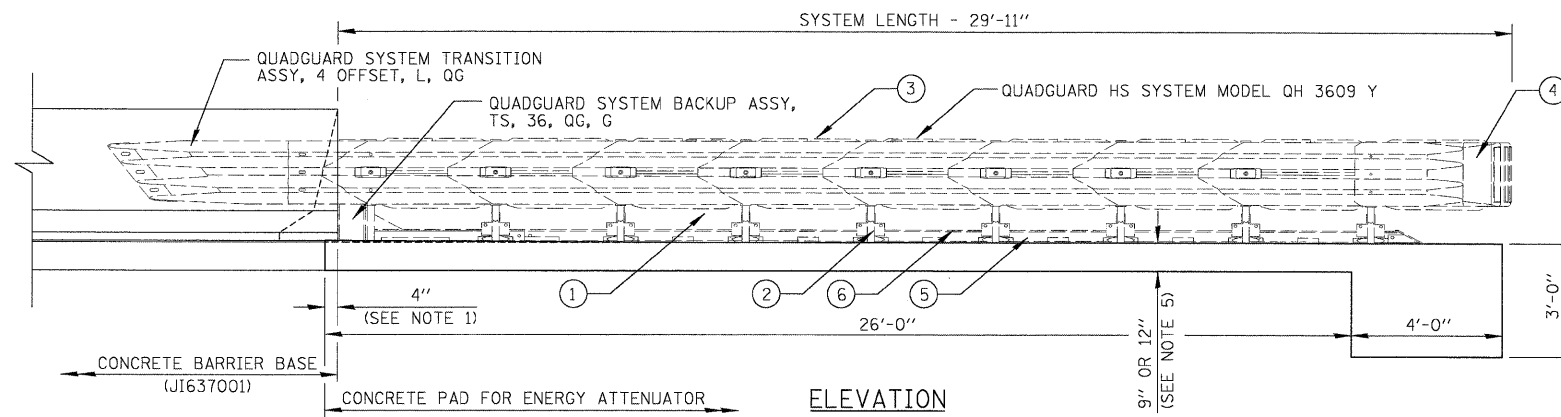


ENERGY ATTENUATOR LOCATIONS:

STATION 3362+10 &
STATION 3363+01

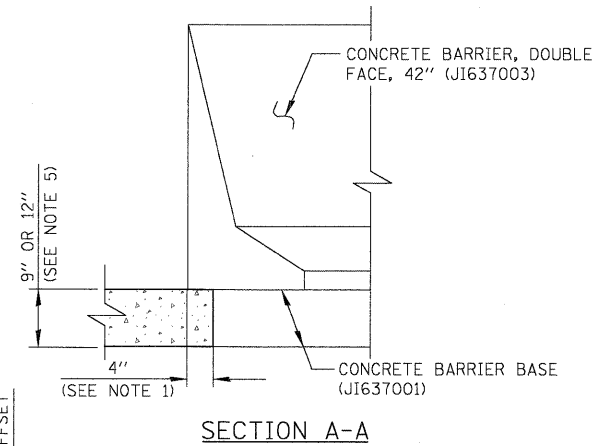


REINFORCING PLAN

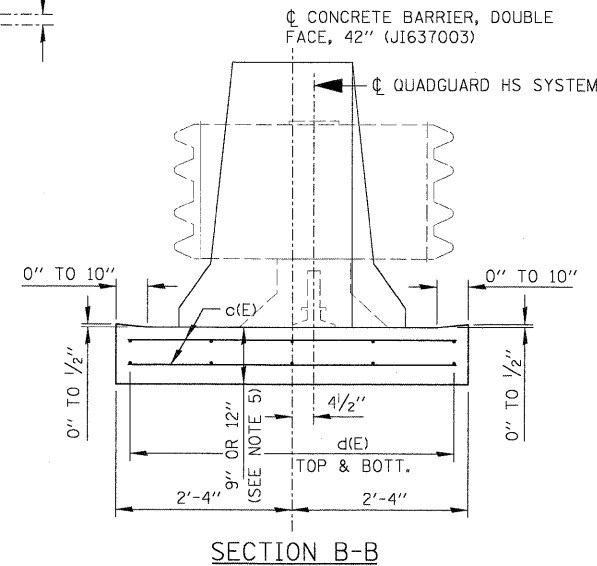
BILL OF MATERIALS (EACH)			
ITEM	UNIT	QUANTITY	PAD THICKNESS
CONCRETE STRUCTURES	CJ. YD.	5	9"
REINFORCING STEEL, EPOXY COATED	LB.	450	

BAR SCHEDULE				
BAR	NO.	SIZE	LENGTH	SHAPE
c(E)	32	#5	4'-4"	—
d(E)	10	#5	29''-8''	—

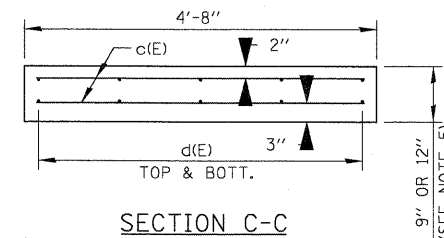
CONCRETE PAD FOR ENERGY ATTENUATORS



SECTION A-A



SECTION B-B



SECTION C-C

NOTES:

- CONCRETE BARRIER, DOUBLE FACE, 42" EXTENDS 4" ONTO CONCRETE BASE FOR ENERGY ATTENUATOR.
- CONTRACTOR SHALL USE THE QUADGUARD SYSTEM AS SHOWN OR APPROVED EQUAL.
- QUAD GUARD HS SYSTEM MODEL QH 3609 Y; QUADGUARD SYSTEM BACK-UP ASSY, TS, 36, QG, G; QUADGUARD SYSTEM TRANSITION ASSEMBLY, 4 OFFSET, L, QG; AND ALL HARDWARE REQUIRED FOR ASSEMBLY AND INSTALLATION TO BE PAID FOR AT THE CONTRACT UNIT PRICE PER EACH AS ENERGY ATTENUATOR (JS120710).
- 25° BEVEL ON RIGHT FACE APPROACHING CONCRETE BARRIER SHALL BE FORMED DURING CONSTRUCTION OF CONCRETE BARRIER. THIS WORK WILL BE INCIDENTAL TO CONCRETE BARRIER, DOUBLE FACE, 42" AND NO ADDITIONAL COMPENSATION WILL BE PAID.
- THE CONCRETE PAD FOR ENERGY ATTENUATOR WILL BE 12" THICK WHEN ADJACENT TO P.C.C. PAVEMENT AND 9" THICK ADJACENT TO BITUMINOUS SHOULDERS. USE A PREFORMED EXPANSION JOINT AROUND PERIMETER OF PAD WHEN ADJACENT TO P.C.C. PAVEMENT.
- REINFORCEMENT BARS DESIGNATED "E" SHALL BE EPOXY COATED.
- REINFORCEMENT BARS SHALL CONFORM TO THE REQUIREMENTS OF ASTM A 706 GR60 (IL MODIFIED). SEE SPECIAL PROVISIONS.
- THE CONTRACTOR SHALL SUBMIT FOR APPROVAL, SHOP DRAWINGS AND DETAILED INSTALLATION DRAWINGS THAT ACCURATELY DEPICT ALL DETAILS NECESSARY FOR COMPLETING THE INSTALLATION.
- THE QUADGUARD SYSTEM OR APPROVED EQUAL, SHALL BE DESIGNED FOR A 70 MPH DESIGN SPEED.
- ALL MATERIAL AND WORKMANSHIP SHALL BE SUBJECT TO THE APPROVAL OF THE ENGINEER.
- THE QUADGUARD OR APPROVED EQUAL, MOUNTING HARDWARE, REINFORCED CONCRETE PAD, REINFORCEMENT IN CONCRETE BARRIER BASE AND ANCHOR BLOCK SHALL BE PAID FOR AS ENERGY ATTENUATOR (JS120710) EACH. BILL OF MATERIALS AND BAR SCHEDULE ARE FOR INFORMATION ONLY.

N:\Info3\091122_000003\Mech\091122_003_DET_07.sht

CHRISTOPHER B. BURKE ENGINEERING, LTD.
9575 W. Higgins Road, Suite 600
Rosemont, Illinois 60018
(847) 623-0500

USER NAME = KBALDWIN
DESIGNED - GAH
DRAWN - FPB
CHECKED - JPC
PLOT DATE = 12/23/2010
DATE = 12/23/2010

REVISED -
REVISED -
REVISED -
REVISED -

**STATE OF ILLINOIS
DEPARTMENT OF TRANSPORTATION**

**F.A.I. 80 FOR NS RAILROAD TO US 45
IMPACT ATTENUATOR (PARTIALLY REDIRECTIVE)
DETAILS**

SCALE: N.T.S. SHEET NO. OF SHEETS STA. TO STA.

DT-07

Added Sheet 1-3-10

F.A.I. RTE.	SECTION	COUNTY	TOTAL SHEETS	SHEET NO.
80	99 (5&5-1) Y-1	WILL		188H.
				CONTRACT NO. 60M59
ILLINOIS FED. AID PROJECT				