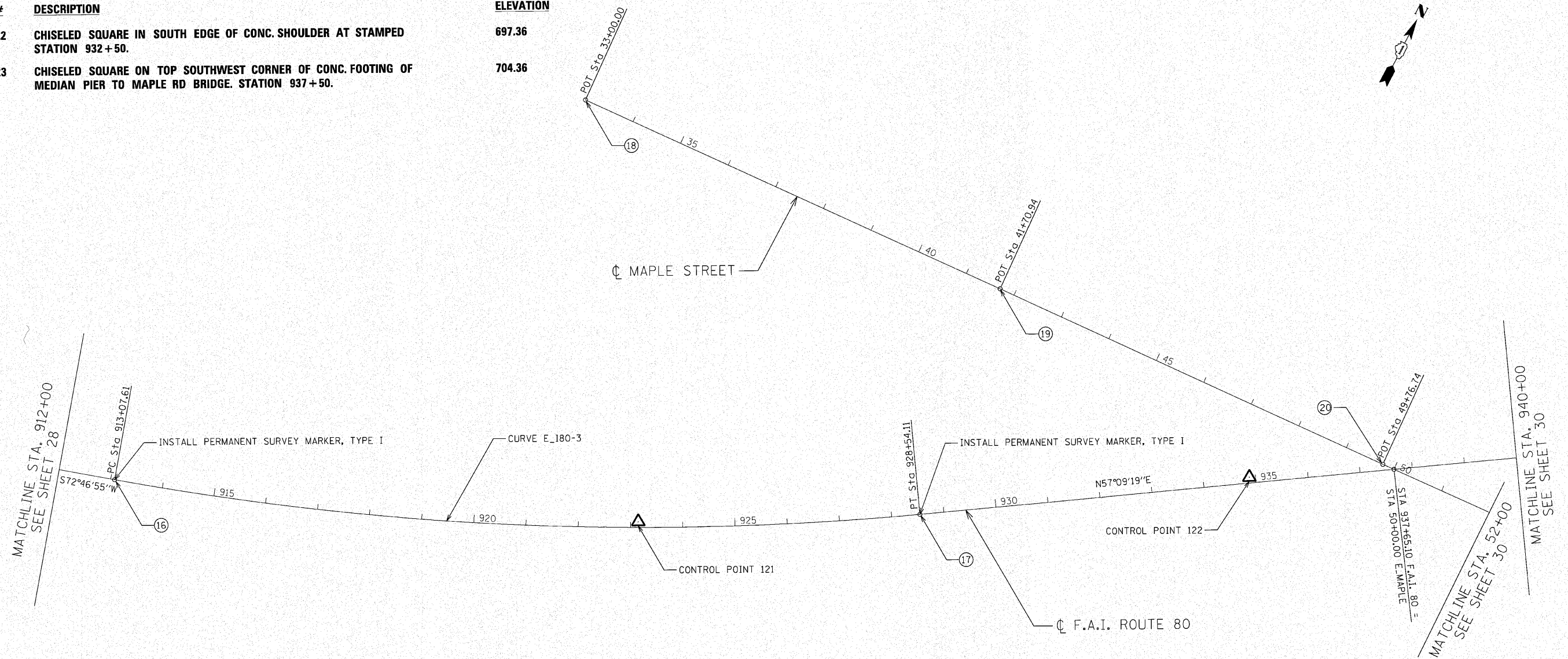


BM#	DESCRIPTION	ELEVATION
BM22	CHISELED SQUARE IN SOUTH EDGE OF CONC. SHOULDER AT STAMPED STATION 932+50.	697.36
BM23	CHISELED SQUARE ON TOP SOUTHWEST CORNER OF CONC. FOOTING OF MEDIAN PIER TO MAPLE RD BRIDGE. STATION 937+50.	704.36

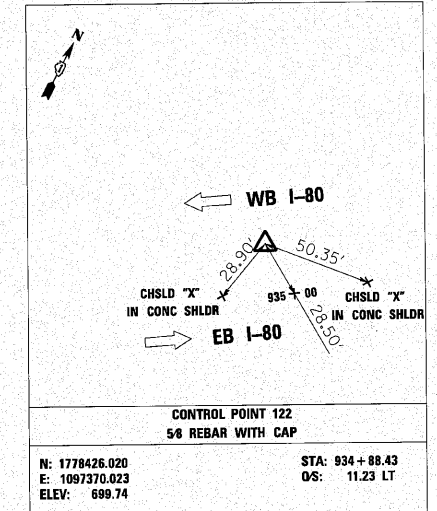
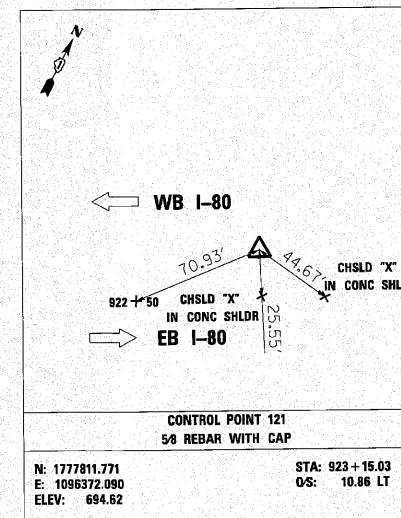


**CURVE DATA F.A.I. ROUTE 80**

CURVE E.180-3  
 PI STA. = 920+85.69  
 $\Delta = 15^\circ 37' 36''$  (LT)  
 $D = 1^\circ 00' 38''$   
 $R = 5,670.33'$   
 $T = 778.08'$   
 $L = 1,546.50'$   
 $E = 53.13'$   
 P.C. STA = 913+07.61  
 P.T. STA = 928+54.11

**PROJECT COORDINATES**

NUMBER	LOCATION	DESCRIPTION	STATION	NORTHING	EASTING
16	FAI - 80	P.C. STATION	913+07.61	1777420.231	1095446.284
17	FAI - 80	P.T. STATION	928+54.11	1778072.549	1096843.191
18	E.MAPLE	P.O.T. STATION	33+00.00	1778479.558	1095910.788
19	E.MAPLE	P.O.T. STATION	41+70.94	1778525.164	1096780.537
20	E.MAPLE	P.O.T. STATION	49+76.74	1778565.383	1097585.329



n:\p\proj\338413\east\design\misc\sheet\338413.dwg

**ENGINEERING CONSULTANT**  
**Clorba Group, Inc.**  
 CONSULTING ENGINEERS  
 2017 North Cicero Road, Suite 402  
 Chicago, IL 60642  
 Tel: 773.776.0000 Fax: 773.776.4014  
 Email: clorba@clorba.com

USER NAME = jk_millean	DESIGNED - CRC	REVISED -
DRAWN - JMK	REVISIONS -	
CHECKED - MRJ	REVISIONS -	
DATE - 10/27/2010	REVISIONS -	

**STATE OF ILLINOIS  
 DEPARTMENT OF TRANSPORTATION**

**F.A.I. 80 FROM NS RAILROAD TO US 45  
 ALIGNMENTS, TIES, AND BENCHMARKS**

SCALE: SHEET NO. OF SHEETS STA. TO STA.

F.A.I. RTE. 80	SECTION 99(5&5-1) Y-1	COUNTY WILL	TOTAL SHEETS 309	SHEET NO. 29
CONTRACT NO. 60M59			ILLINOIS FED. AID PROJECT	