

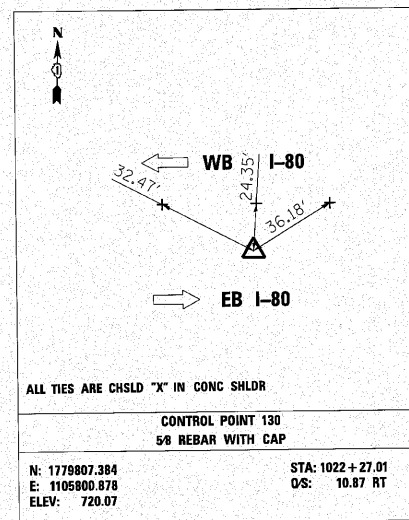
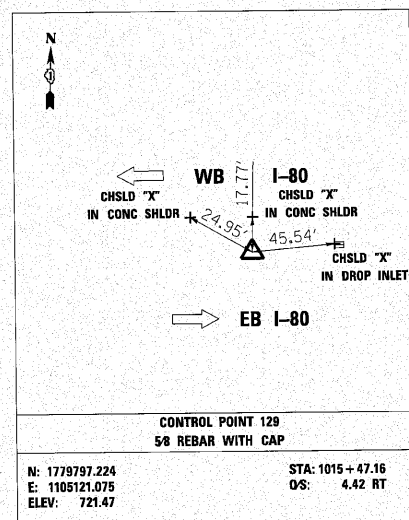
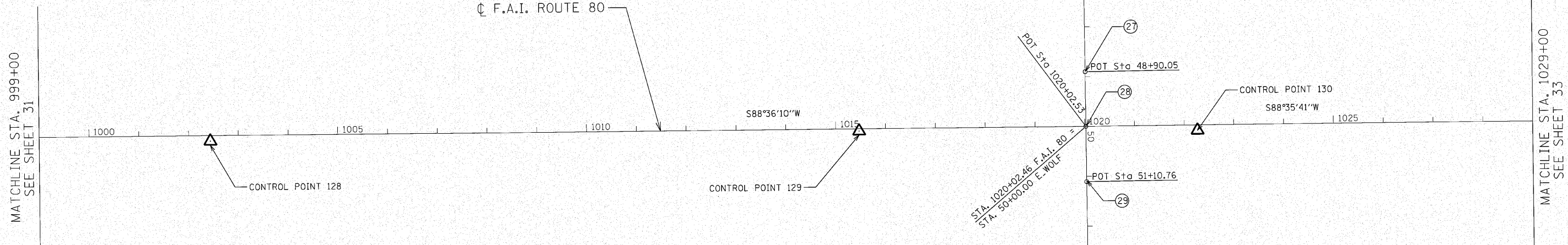
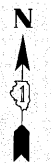
- | BM# | DESCRIPTION | ELEVATION |
|------|---------------------------------------------------------------------------------------------------------------|-----------|
| BM28 | CHISELED SQUARE SOUTH EDGE OF CONC. SHOULDER AT STAMPED STATION 1000+00. | 729.93 |
| BM29 | CHISELED SQUARE SOUTH EDGE OF CONC. MERGE RAMP FROM WEIGH STATION AT STAMPED STATION 1010+00. | 725.36 |
| BM30 | CHISELED SQUARE ON TOP OF CONC. CRASH WALL ON SOUTH SIDE OF I-80 WEST OF WOLF ROAD BRIDGE AT STATION 1019+85. | 724.04 |

ELEVATION

729.93

725.36

724.04



NUMBER	LOCATION	DESCRIPTION	STATION	NORTHING	EASTING
26	E_WOLF	P.O.T. STATION	42+00.00	1780612.402	1105552.585
27	E_WOLF	P.O.T. STATION	48+90.05	1779922.656	1105573.125
28	E_WOLF	P.O.T. STATION	50+00.00	1779812.747	1105576.133
29	E_WOLF	P.O.T. STATION	51+10.76	1779702.028	1105579.162
30	E_WOLF	P.O.T. STATION	57+00.00	1779113.065	1105597.219

n:\proj\33841_3_sas\design\m\acsheds\33841E-Align\Title1.dgn

ENGINEERING CONSULTANT

Clorba Group, Inc.
CONSULTING ENGINEERS
5507 North Cumberland Avenue, Suite 402
Chicago, IL 60630
Tel: 773.776.4014 Fax: 773.776.4014
Email: chg@clorba.com

USER NAME = jk.jellman	DESIGNED - CRC	REVISED -
DRAWN - JMK	CHECKED - MRJ	DATE - 10/27/2010
PLOT SCALE = 1/8" = 100.0000' / 1"	PLOT DATE = 10/28/2010	

STATE OF ILLINOIS
DEPARTMENT OF TRANSPORTATION

F.A.I. 80 FROM NS RAILROAD TO US 45
ALIGNMENTS, TIES, AND BENCHMARKS

SCALE: SHEET NO. OF SHEETS STA. TO STA.

F.A.I. RTE. 80	SECTION 99(5&5-1) Y-1	COUNTY WILL	TOTAL SHEETS 309	SHEET NO. 32
ILLINOIS FED. AID PROJECT			CONTRACT NO. 60M59	