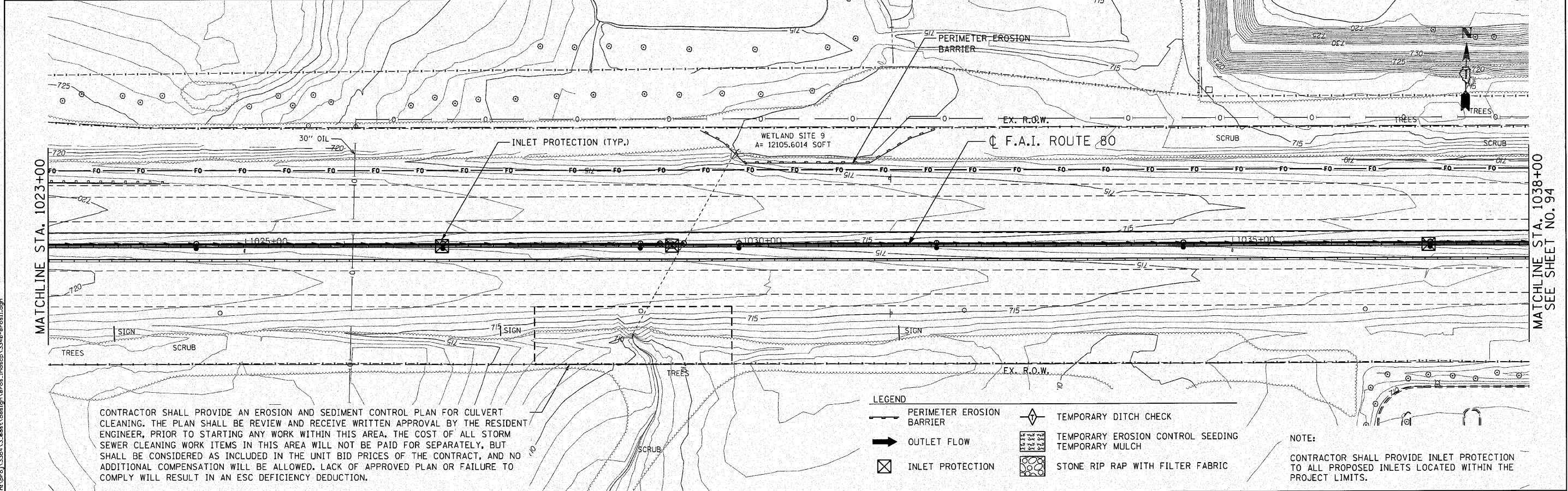


MATCHLINE STA. 1008+00
SEE SHEET NO. 92

MATCHLINE STA. 1023+00

CONTRACTOR SHALL PROVIDE AN EROSION AND SEDIMENT CONTROL PLAN FOR CULVERT CLEANING. THE PLAN SHALL BE REVIEW AND RECEIVE WRITTEN APPROVAL BY THE RESIDENT ENGINEER, PRIOR TO STARTING ANY WORK WITHIN THIS AREA. THE COST OF ALL STORM SEWER CLEANING WORK ITEMS IN THIS AREA WILL NOT BE PAID FOR SEPARATELY, BUT SHALL BE CONSIDERED AS INCLUDED IN THE UNIT BID PRICES OF THE CONTRACT, AND NO ADDITIONAL COMPENSATION WILL BE ALLOWED. LACK OF APPROVED PLAN OR FAILURE TO COMPLY WILL RESULT IN AN ESC DEFICIENCY DEDUCTION.



MATCHLINE STA. 1023+00

MATCHLINE STA. 1038+00
SEE SHEET NO. 94

CONTRACTOR SHALL PROVIDE AN EROSION AND SEDIMENT CONTROL PLAN FOR CULVERT CLEANING. THE PLAN SHALL BE REVIEW AND RECEIVE WRITTEN APPROVAL BY THE RESIDENT ENGINEER, PRIOR TO STARTING ANY WORK WITHIN THIS AREA. THE COST OF ALL STORM SEWER CLEANING WORK ITEMS IN THIS AREA WILL NOT BE PAID FOR SEPARATELY, BUT SHALL BE CONSIDERED AS INCLUDED IN THE UNIT BID PRICES OF THE CONTRACT, AND NO ADDITIONAL COMPENSATION WILL BE ALLOWED. LACK OF APPROVED PLAN OR FAILURE TO COMPLY WILL RESULT IN AN ESC DEFICIENCY DEDUCTION.

- LEGEND**
- PERIMETER EROSION BARRIER
 - OUTLET FLOW
 - ⊗ INLET PROTECTION
 - ◇ TEMPORARY DITCH CHECK
 - ▨ TEMPORARY EROSION CONTROL SEEDING
 - ▩ TEMPORARY MULCH
 - ⊞ STONE RIP RAP WITH FILTER FABRIC

NOTE:
CONTRACTOR SHALL PROVIDE INLET PROTECTION TO ALL PROPOSED INLETS LOCATED WITHIN THE PROJECT LIMITS.

ENGINEERING CONSULTANT
Giorba Group, Inc.
 CONSULTING ENGINEERS
 5507 North Cumberland Avenue, Suite 402
 Chicago, Illinois 60630
 Tel: 773.776.4000 Fax: 773.776.4014
 Email: giorba@corp.com

USER NAME = dmorr18
 PLOT SCALE = 50,000' / IN.
 PLOT DATE = 12/6/2010

DESIGNED - CRC
 DRAWN - JMK
 CHECKED - MRJ
 DATE - 10/27/2010

REVISED -
 REVISED -
 REVISED -
 REVISED -

**STATE OF ILLINOIS
 DEPARTMENT OF TRANSPORTATION**

**F.A.I. 80 FROM NS RAILROAD TO US 45
 EROSION AND SEDIMENT CONTROL PLAN**

SCALE: 1" = 50' SHEET NO. OF SHEETS STA. 1008+00 TO STA. 1038+00

F.A.I. RTE.	SECTION	COUNTY	TOTAL SHEETS	SHEET NO.
80	99(5&5-1) Y-1	WILL	309	93
CONTRACT NO. 60M59				ILLINOIS FED. AID PROJECT