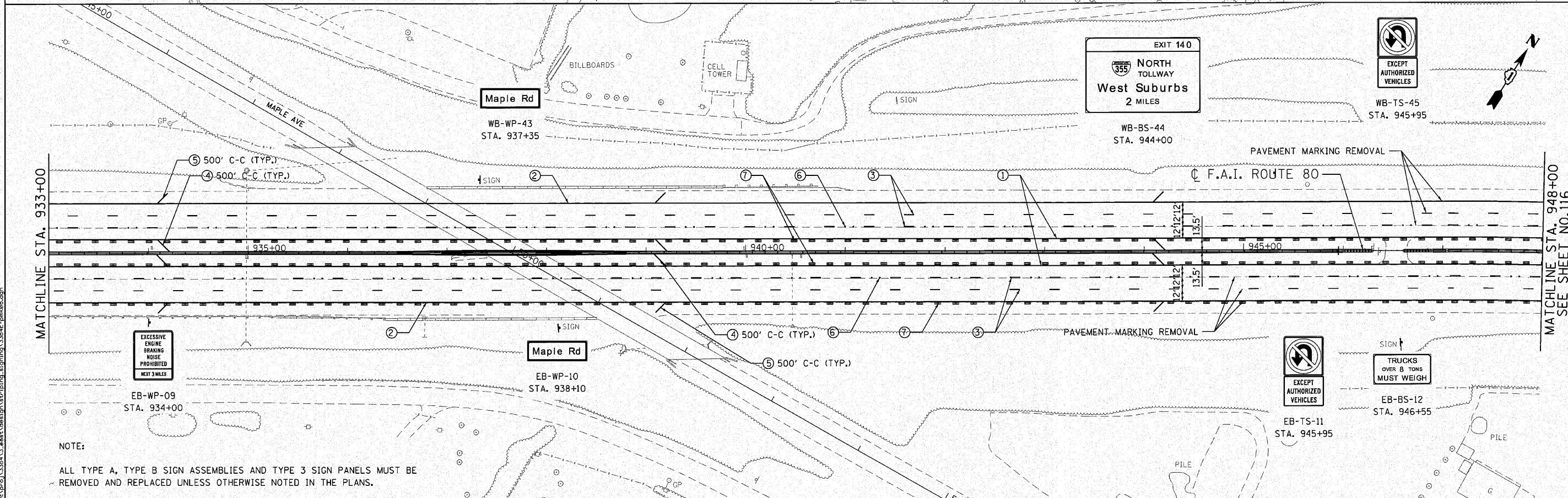
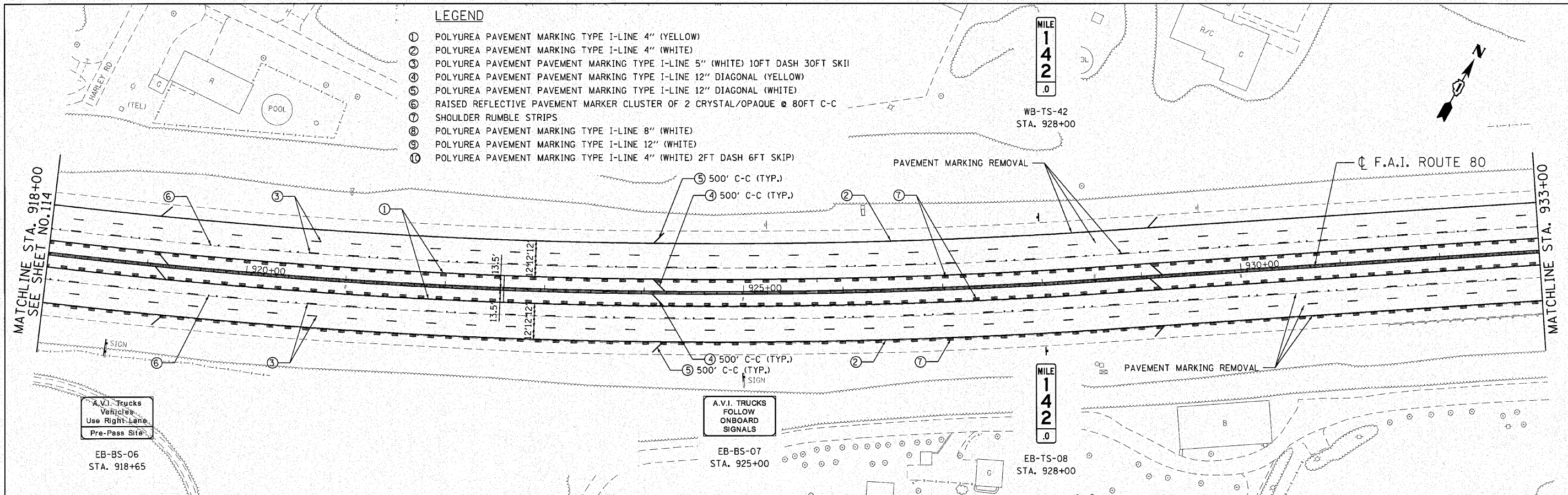


**LEGEND**

- ① POLYUREA PAVEMENT MARKING TYPE I-LINE 4" (YELLOW)
- ② POLYUREA PAVEMENT MARKING TYPE I-LINE 4" (WHITE)
- ③ POLYUREA PAVEMENT MARKING TYPE I-LINE 5" (WHITE) 10FT DASH 30FT SKIP
- ④ POLYUREA PAVEMENT MARKING TYPE I-LINE 12" DIAGONAL (YELLOW)
- ⑤ POLYUREA PAVEMENT MARKING TYPE I-LINE 12" DIAGONAL (WHITE)
- ⑥ RAISED REFLECTIVE PAVEMENT MARKER CLUSTER OF 2 CRYSTAL/OPAQUE @ 80FT C-C
- ⑦ SHOULDER RUMBLE STRIPS
- ⑧ POLYUREA PAVEMENT MARKING TYPE I-LINE 8" (WHITE)
- ⑨ POLYUREA PAVEMENT MARKING TYPE I-LINE 12" (WHITE)
- ⑩ POLYUREA PAVEMENT MARKING TYPE I-LINE 4" (WHITE) 2FT DASH 6FT SKIP



NOTE:  
ALL TYPE A, TYPE B SIGN ASSEMBLIES AND TYPE 3 SIGN PANELS MUST BE REMOVED AND REPLACED UNLESS OTHERWISE NOTED IN THE PLANS.

**ENGINEERING CONSULTANT**  
**Clorba Group, Inc.**  
 CONSULTING ENGINEERS  
 5507 North Cumberland Avenue, Suite 402  
 Chicago, Illinois 60630  
 Tel: 773.775.4000 Fax: 773.775.4014  
 Email: clorba@clorba.com

USER NAME = jkellman	DESIGNED - CRC	REVISED -
PLOT SCALE = 50,000' / IN.	DRAWN - JMK	REVISED -
PLOT DATE = 12/3/2010	CHECKED - MRJ	REVISED -
	DATE - 10/27/2010	REVISED -

**STATE OF ILLINOIS**  
**DEPARTMENT OF TRANSPORTATION**

**F.A.I. 80 FROM NS RAILROAD TO US 45**  
**PAVEMENT MARKING AND SIGNING PLAN**

SCALE: 1" = 50' SHEET NO. OF SHEETS STA. 918+00 TO STA. 948+00

F.A.I. RTE.	SECTION	COUNTY	TOTAL SHEETS	SHEET NO.
80	99(5&5-1) Y-1	WILL	309	115
			CONTRACT NO. 60M59	
ILLINOIS FED. AID PROJECT				