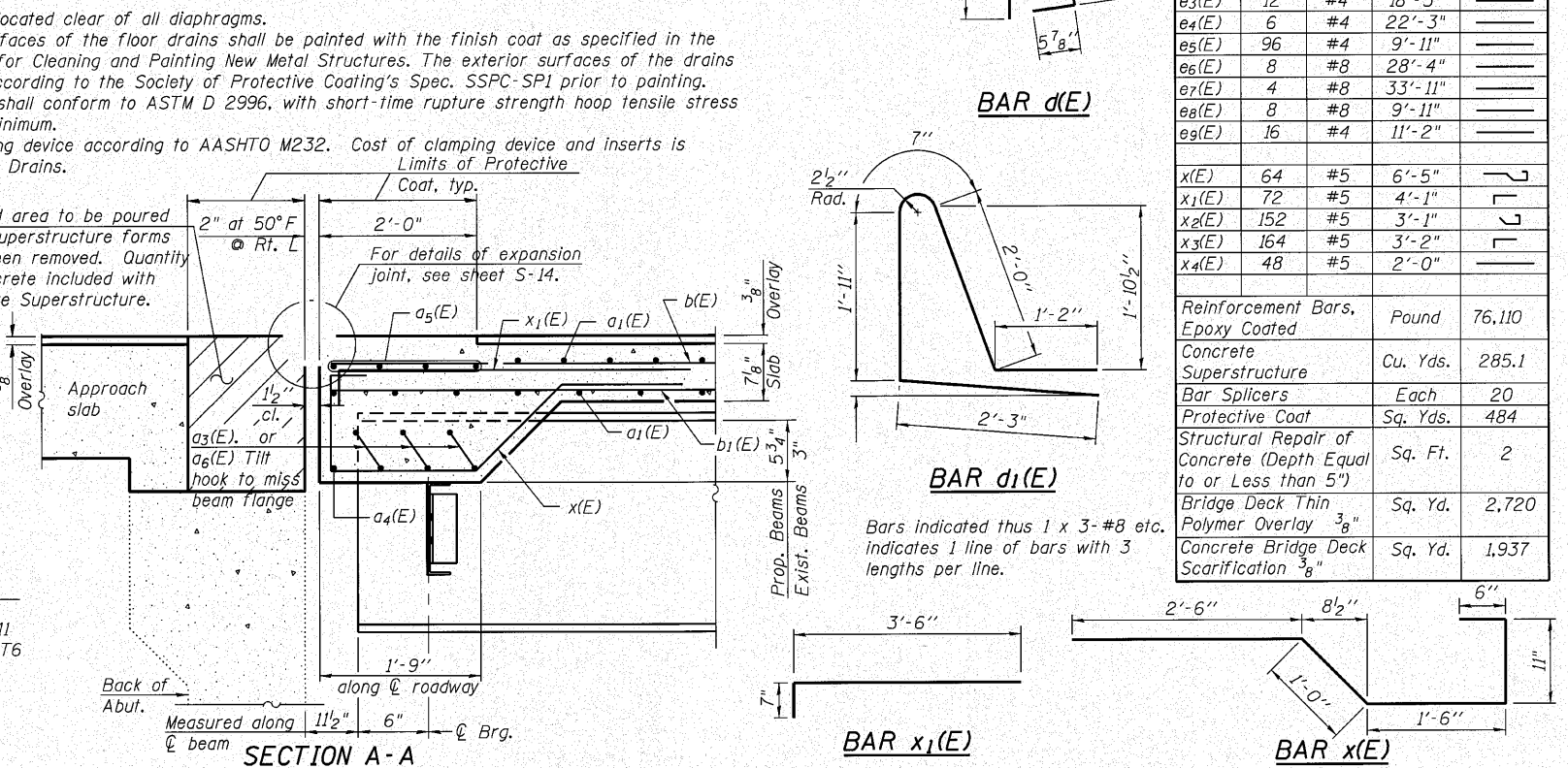
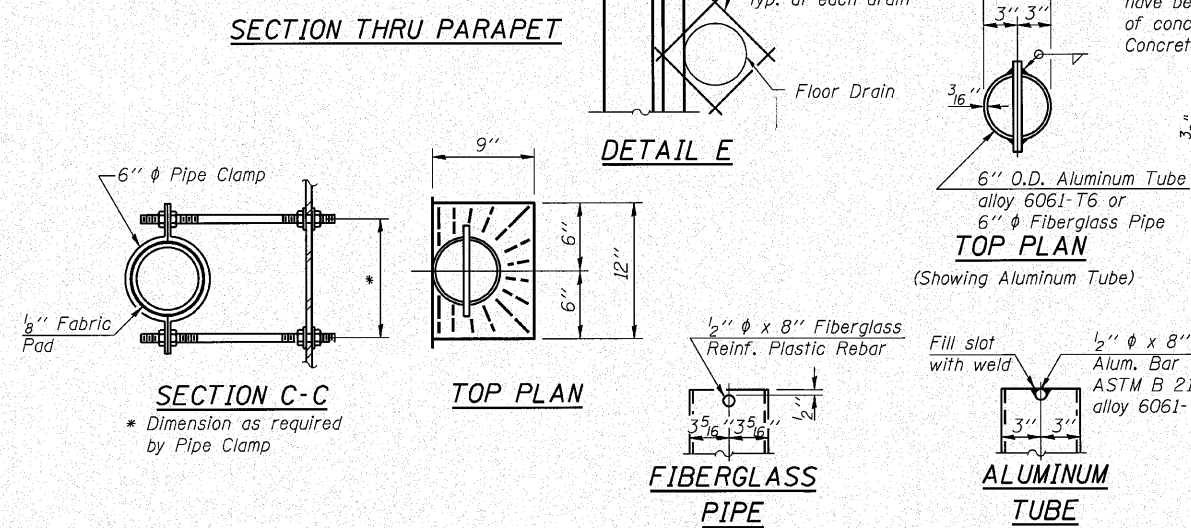


**SUPERSTRUCTURE BILL OF MATERIAL**

Bar	No.	Size	Length	Shape
a <sub>1</sub> (E)	1410	#5	18'-4"	—
a <sub>2</sub> (E)	408	#6	6'-6"	—
a <sub>3</sub> (E)	24	#6	9'-10"	—
a <sub>4</sub> (E)	16	#7	15'-11"	—
a <sub>5</sub> (E)	48	#7	19'-5"	—
a <sub>6</sub> (E)	72	#7	12'-4"	—
a <sub>7</sub> (E)	48	#7	19'-1"	—
a <sub>8</sub> (E)	16	#7	14'-10"	—
b(E)	360	#5	26'-0"	—
b <sub>1</sub> (E)	76	#6	38'-9"	—
b <sub>2</sub> (E)	304	#5	28'-10"	—
d(E)	490	#5	6'-10"	—
d <sub>1</sub> (E)	454	#5	7'-11"	—
d <sub>2</sub> (E)	440	#5	1'-9"	—
d <sub>3</sub> (E)	440	#4	1'-4"	—
e <sub>1</sub> (E)	88	#4	15'-5"	—
e <sub>2</sub> (E)	132	#4	17'-0"	—
e <sub>3</sub> (E)	12	#4	18'-5"	—
e <sub>4</sub> (E)	6	#4	22'-3"	—
e <sub>5</sub> (E)	96	#4	9'-11"	—
e <sub>6</sub> (E)	8	#8	28'-4"	—
e <sub>7</sub> (E)	4	#8	33'-11"	—
e <sub>8</sub> (E)	8	#8	9'-11"	—
e <sub>9</sub> (E)	16	#4	11'-2"	—
x(E)	64	#5	6'-5"	—
x <sub>1</sub> (E)	72	#5	4'-1"	—
x <sub>2</sub> (E)	152	#5	3'-1"	—
x <sub>3</sub> (E)	164	#5	3'-2"	—
x <sub>4</sub> (E)	48	#5	2'-0"	—
Reinforcement Bars, Epoxy Coated	Pound		76,110	
Concrete Superstructure	Cu. Yds.		285.1	
Bar Splicers	Each		20	
Protective Coat	Sq. Yds.		484	
Structural Repair of Concrete (Depth Equal to or Less than 5")	Sq. Ft.		2	
Bridge Deck Thin Polymer Overlay 3/8"	Sq. Yd.		2,720	
Concrete Bridge Deck Scarification 3/8"	Sq. Yd.		1,937	



FILE NAME =	USER NAME = rdnley	DESIGNED - BWS	REVISED -
		CHECKED - EKM	REVISED -
		DRAWN - RD	REVISED -
		CHECKED - SCD	REVISED -

**STATE OF ILLINOIS**  
**DEPARTMENT OF TRANSPORTATION**

**SUPERSTRUCTURE DETAILS I**  
**STRUCTURE NO. 099-0070 (E.B.) & 099-0071 (W.B.)**  
SHEET NO. S-10 OF S-27 SHEETS

F.A.I. RTE.	SECTION	COUNTY	TOTAL SHEETS	SHEET NO.
80	99(5&5-1) 1-1	WILL	309	198
CONTRACT NO. 60M59			ILLINOIS FED. AID PROJECT	

n:\pro\2304\3.east\design\structure\1-80 over-n&s\acad\3384.1-80 N&S 10 Superstr. Details.lgdg  
 Ciorba Group, Inc.  
 CONSULTING ENGINEERS  
 5011 North Cumberland Avenue  
 Suite 202, Chicago, Illinois 60630  
 Tel: 773-775-2000  
 Fax: 773-775-2014  
 Email: Chicago@Ciorba.com