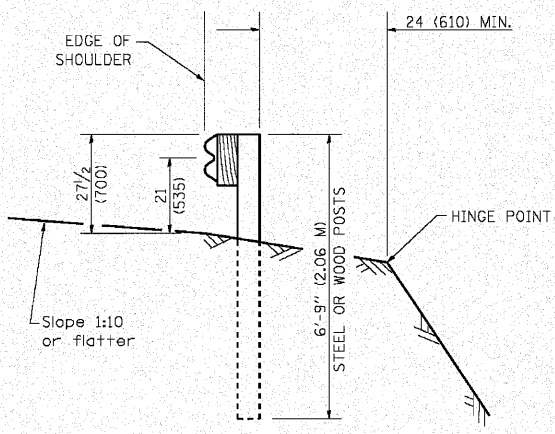
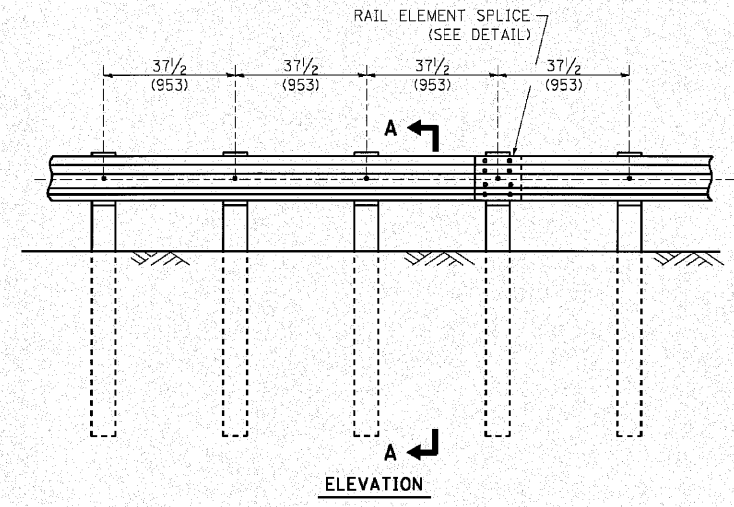


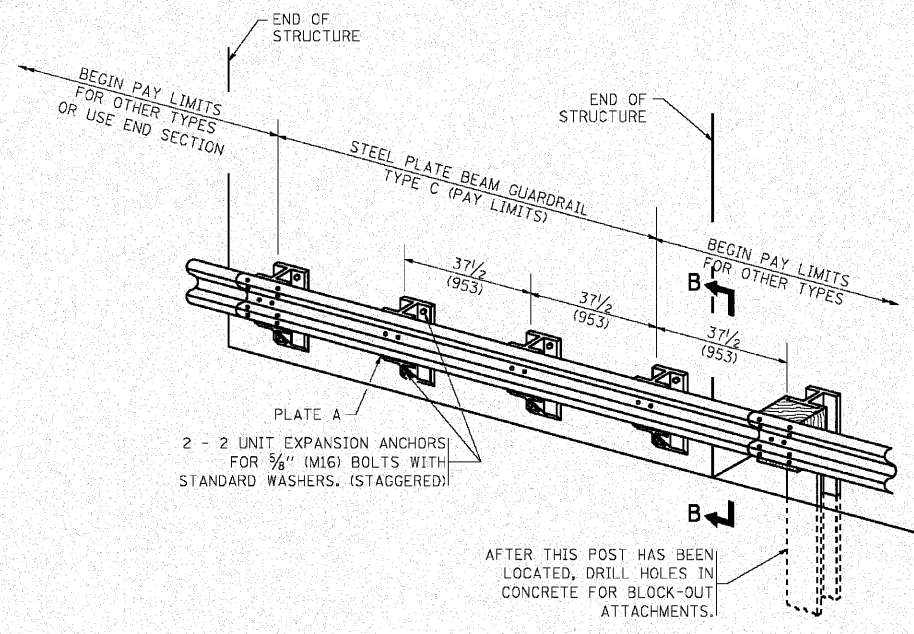
**ELEVATION**  
**TYPE A**  
6'-3" (1.905 M) TYPICAL POST SPACING



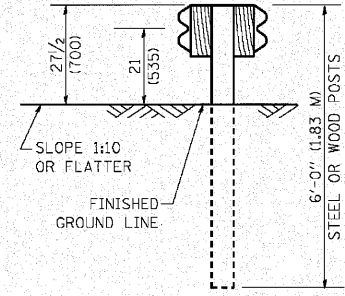
**SECTION A-A**



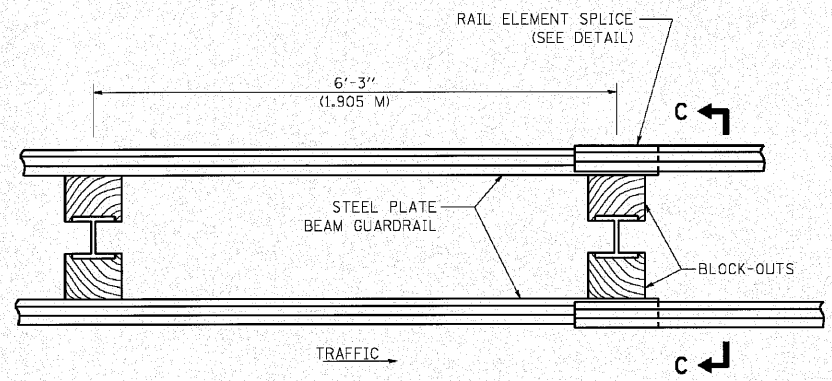
**ELEVATION**  
**TYPE A**  
37 1/2 (953) CLOSED POST SPACING



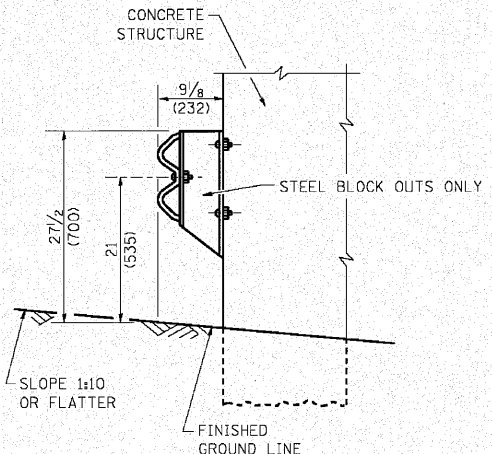
**TYPE C**  
37 1/2 (953) BLOCK-OUT SPACING



**SECTION C-C**



**PLAN**  
**TYPE D**  
DOUBLE STEEL PLATE BEAM GUARDRAIL  
6'-3" (1.905 M) TYPICAL POST SPACING



**SECTION B-B**

**GENERAL NOTES**

ALL SLOPE RATIOS ARE EXPRESSED AS UNITS OF VERTICAL DISPLACEMENT TO UNITS OF HORIZONTAL DISPLACEMENT (V:H).

ALL DIMENSIONS ARE IN INCHES (MILLIMETERS) UNLESS OTHERWISE SHOWN.

THE EXISTING STEEL POSTS MAY BE DRILLED TO MATCH THE BOLT PATTERN SHOWN HEREIN FOR THE WOOD BLOCK-OUT, OR A NEW STEEL POST SHALL BE PROVIDED.

THIS DETAIL IS APPLICABLE TO THE GUARDRAIL SYSTEM USED PRIOR TO JANUARY 1, 2007. FOR DETAILS ON THE MIDWEST GUARDRAIL SYSTEM, SEE STANDARD 630001.

NA:\PROJ\3384\3\_East\Design\Detail\3384E-Detail04.dwg (Standard.dwg)

	USER NAME = gaglianobt	DESIGNED -	REVISED - 10-31-06	<b>STATE OF ILLINOIS</b> <b>DEPARTMENT OF TRANSPORTATION</b>	<b>REMOVE AND REERECT</b> <b>STEEL PLATE BEAM GUARDRAIL</b>		F.A.I. RTE. 80	SECTION 99(5&5-1) Y-1	COUNTY WILL	TOTAL SHEETS 309	SHEET NO. 224
	PLOT SCALE = 50.0000' / IN. PLOT DATE = 1/4/2008	DRAWN -	CHECKED -		REVISED -	SCALE: NONE	SHEET NO. 1 OF 4 SHEETS	STA. TO STA.	<b>BM-21</b> FED. ROAD DIST. NO. 1 ILLINOIS FED. AID PROJECT		<b>CONTRACT NO. 60M59</b>