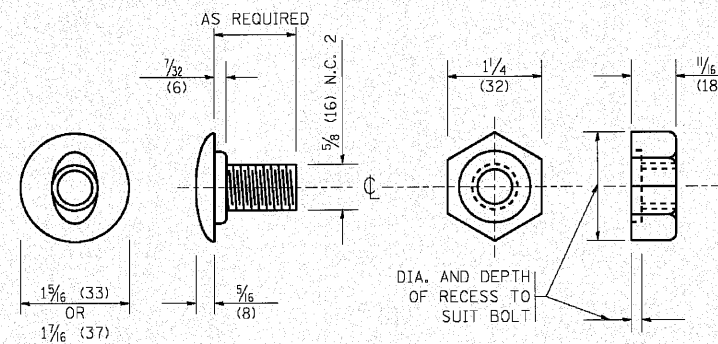


**NOTE:**

PLATE A SHALL BE PLACED BETWEEN RAIL ELEMENT AND BLOCK-OUT AT NON-SPLICE MOUNTING POINTS ONLY WHEN STEEL BLOCK-OUTS ARE USED.



N:\PROJECTS\338413\_East\Design\Details\3384E-Detail04B.dwg (Standard.dwg)

|  |                                |            |                    |   |  |                         |   |         |                           |              |           |
|--|--------------------------------|------------|--------------------|---|--|-------------------------|---|---------|---------------------------|--------------|-----------|
| <p>ENGINEERING CONSULTANT<br/>Clorba Group, Inc.<br/>CONSULTING ENGINEERS<br/>201 N. WILSON AVENUE, SUITE 100<br/>CHICAGO, ILLINOIS 60641<br/>TEL: 773.775.4000 FAX: 773.775.4014<br/>WWW.CLORBA.COM</p> | USER NAME = gaglianobt         | DESIGNED - | REVISED - 10-31-06 | <b>STATE OF ILLINOIS</b><br><b>DEPARTMENT OF TRANSPORTATION</b> | <b>REMOVE AND REERECT</b><br><b>STEEL PLATE BEAM GUARDRAIL</b> |                         | F.A.T. RTE. =                                     | SECTION | COUNTY                    | TOTAL SHEETS | SHEET NO. |
|  | PLDT SCALE = 50.0000' / 1" IN. | DRAWN -    | REVISED -          |   | SCALE: NONE  | SHEET NO. 2 OF 4 SHEETS | STA. TO STA.                                      | 80      | 99(5&5-1) Y-1             | WILL         | 309       |
| PLDT DATE = 1/4/2008   | CHECKED -                      | REVISED -  |                    |   |  |                         | <b>BM-21</b>                                      |         | <b>CONTRACT NO. 60M59</b> |              |           |
|  | DATE -                         | REVISED -  |                    |   |  |                         | FED. ROAD DIST. NO. 1   ILLINOIS FED. AID PROJECT |         |                           |              |           |